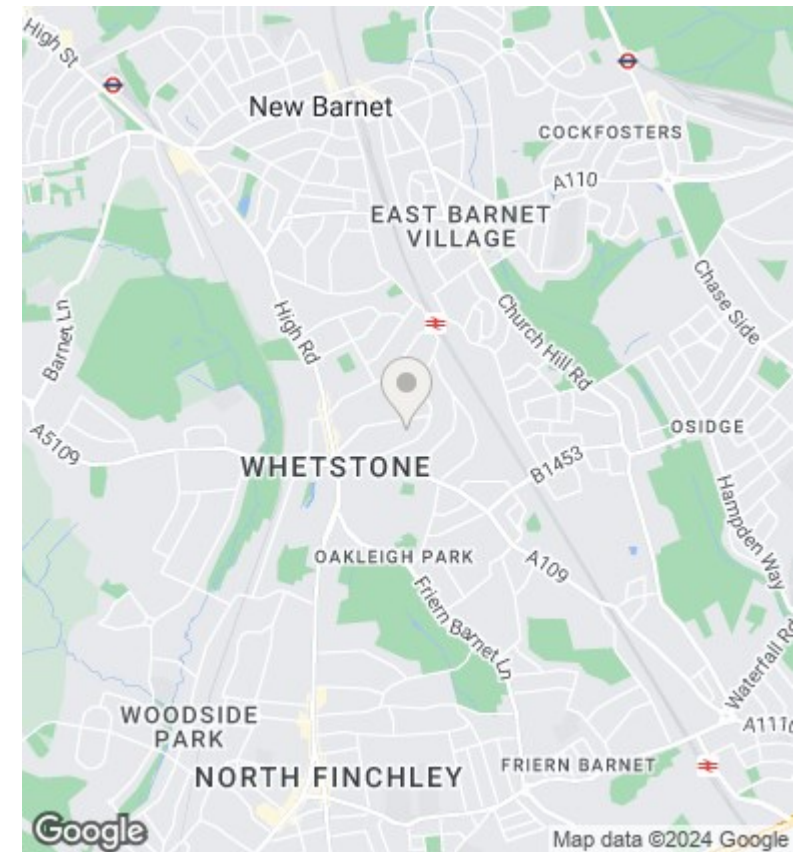
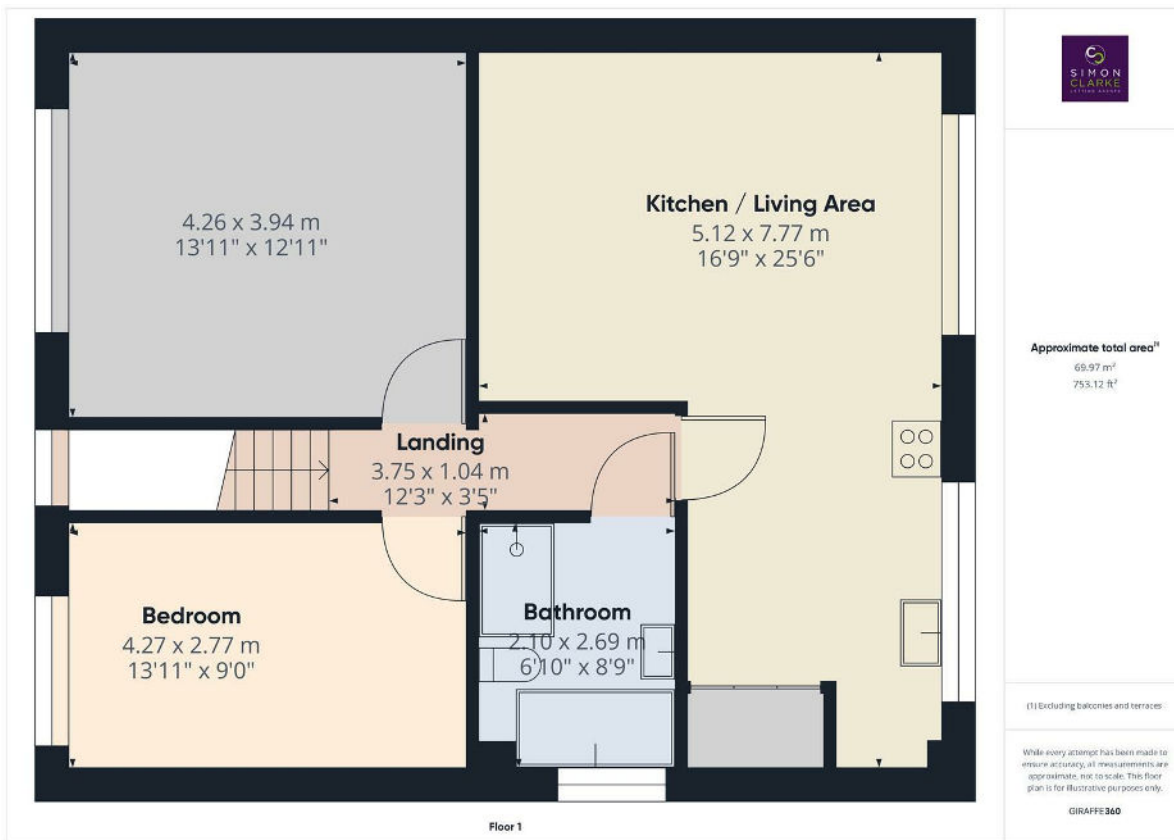




2 The Firs, Athenaeum Road, Whetstone, London, N20 9BA

£1,725 PCM

- Managed by Simon Clarke Letting Agents
- Own garden
- Available on long term tenancy (initial 12 months)
- Available from 22nd June 2024
- 1st Floor 2 double bedroom maisonette
- Close to Totteridge & Whetstone Underground Station
- Council tax band D - £1,943.24pa
- Fully fitted kitchen with appliances including a dishwasher
- A few minutes walk to Oakleigh Park overground station
- Unfurnished



Directions

Viewings

Viewings by arrangement only. Call 02083499000 to make an appointment.

Council Tax Band

D

EPC Rating:

C

