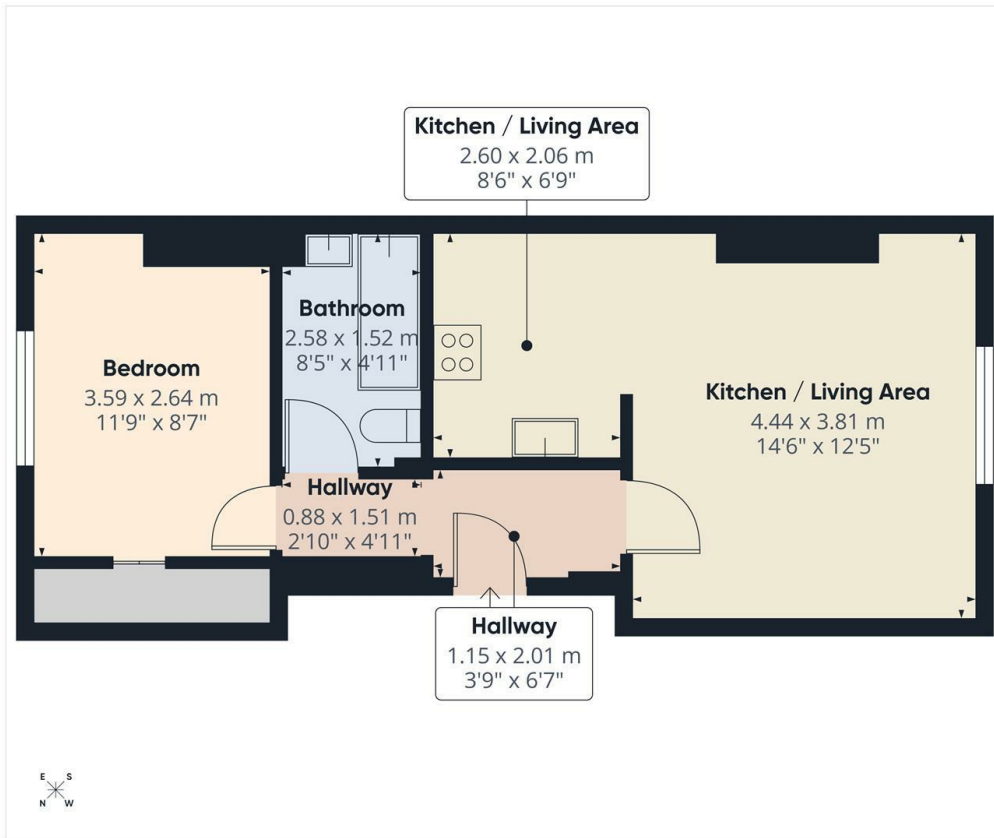




36 Alexandra Grove, London, N12 8HG

£1,600 PCM

- 1st Floor 1 bedroom flat
- Spacious lounge open plan with new fitted kitchen
- Gas central heating
- Available NOW
- Freshly redecorated throughout
- Brand new fully tiled bathroom suite
- Fitted carpets throughout
- Off street parking for 1 car
- Close to West Finchley Tube Station
- Part furnished

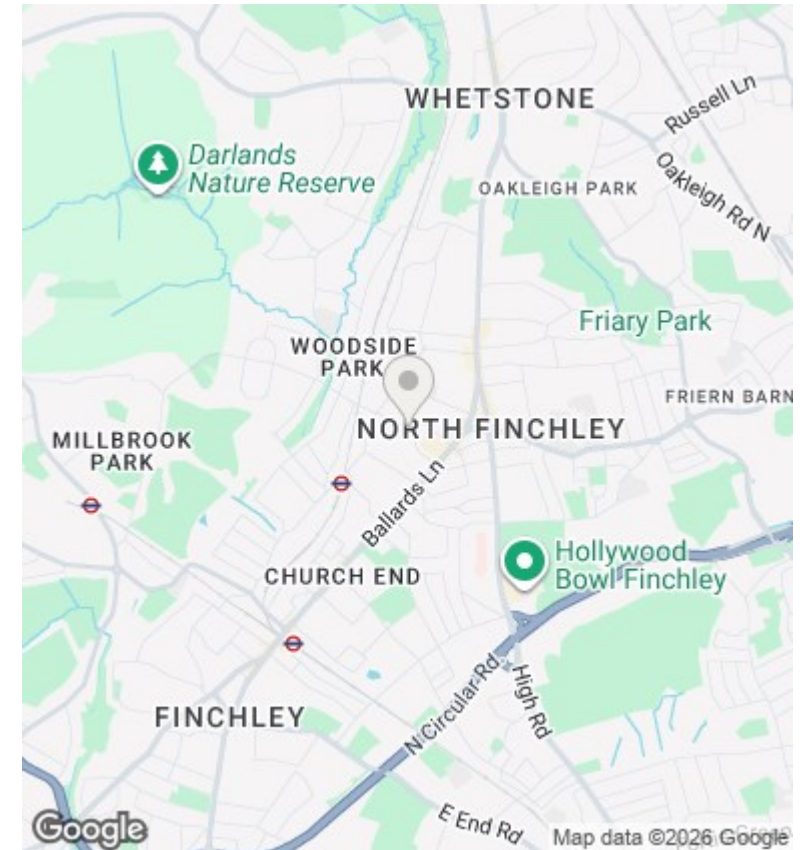


Approximate total area⁽¹⁾
40.9 m²
440 ft²

(1) Excluding balconies and terraces

Calculations reference the RICS IPMS 3C standard. Measurements are approximate and not to scale. This floor plan is intended for illustration only.

GIRAFFE360



Directions

Viewings

Viewings by arrangement only. Call 02083499000 to make an appointment.

Council Tax Band

C

EPC Rating:

D

Energy Efficiency Rating		Current	Potential
<i>Very energy efficient - lower running costs</i>			
(92 plus) A			
(81-91) B			
(69-80) C			71
(55-68) D		56	
(39-54) E			
(21-38) F			
(1-20) G			
<i>Not energy efficient - higher running costs</i>			
England & Wales		EU Directive 2002/91/EC	