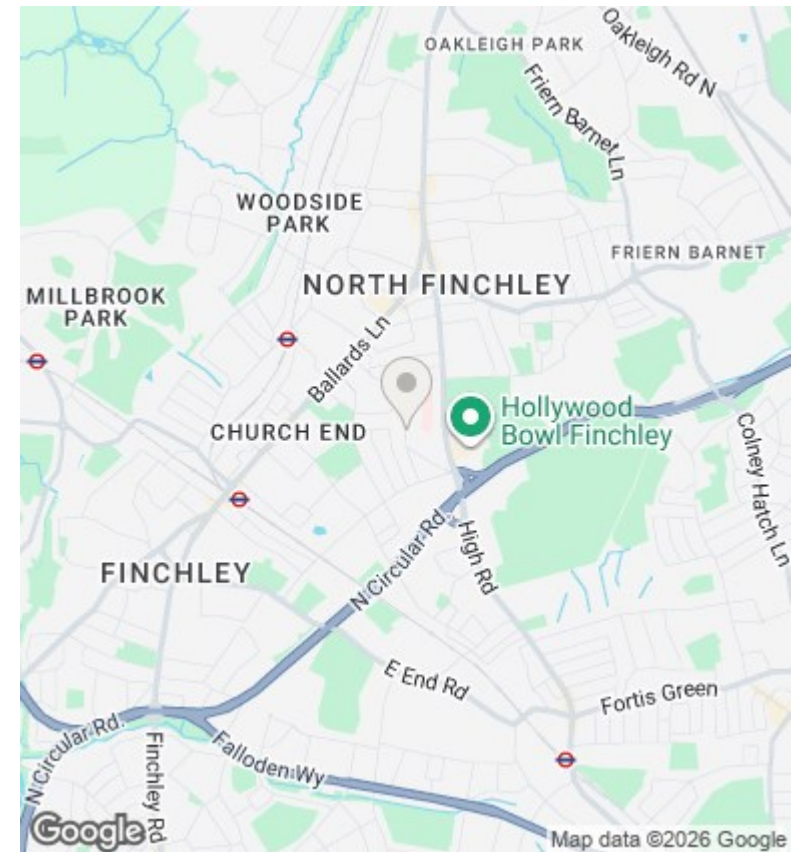
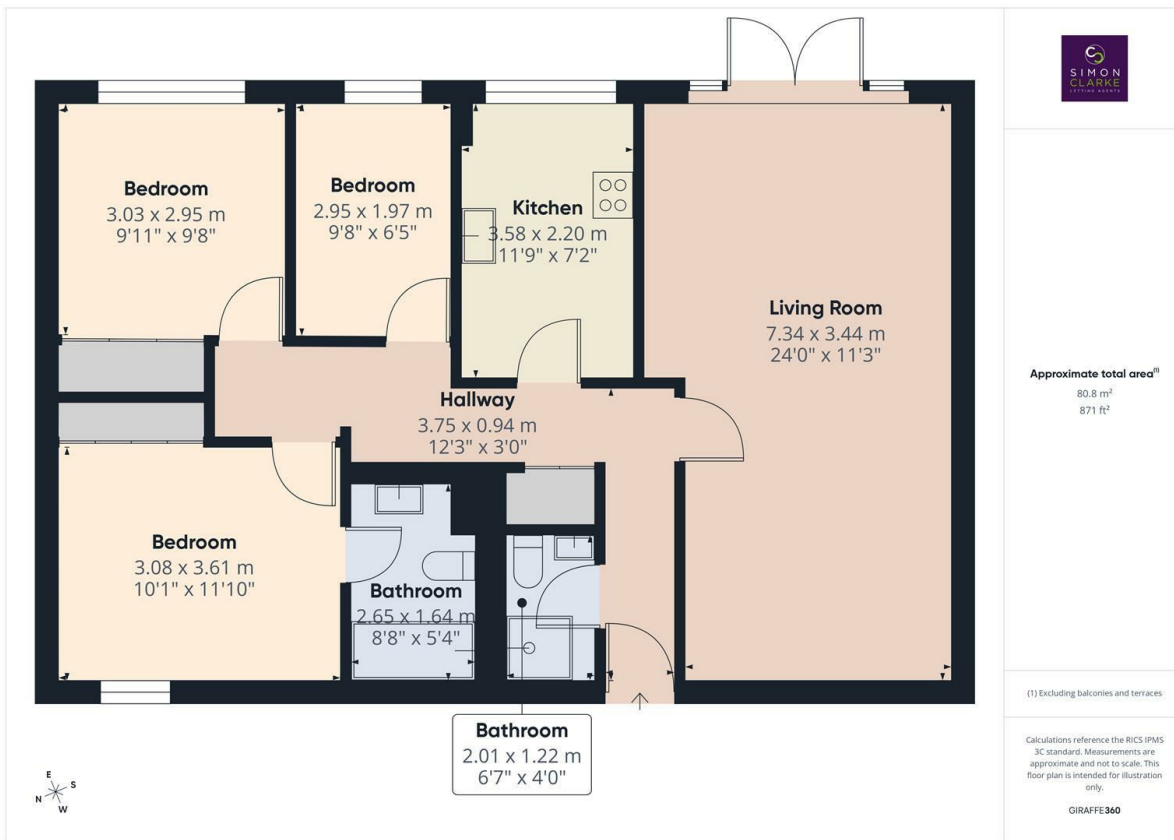




## Bow Lane, London, N12 0JL

£2,500 Per Calendar Month

- Ground floor three bedroom, 2 bathroom apartment in a purpose-built block
- Master bedroom with fitted wardrobes and en-suite bathroom
- Deposit £2880
- Available from 23rd May 2026
- Private garden with direct access from the reception room; garden maintenance included
- video entryphone system
- Part furnished / unfurnished
- Modern kitchen with integrated appliances including double oven and dishwasher
- wooden flooring throughout
- Council tax band E



## Directions

7 Ballards Lane, Finchley, London, N3 1UX  
02083499000

## Viewings

Viewings by arrangement only. Call 02083499000 to make an appointment.

## Council Tax Band

E

## EPC Rating:

C

Energy Efficiency Rating		Current	Potential
<i>Very energy efficient - lower running costs</i>			
(92 plus) <b>A</b>			
(81-91) <b>B</b>			
(69-80) <b>C</b>		80	80
(55-68) <b>D</b>			
(39-54) <b>E</b>			
(21-38) <b>F</b>			
(1-20) <b>G</b>			
<i>Not energy efficient - higher running costs</i>			
<b>England &amp; Wales</b>		EU Directive 2002/91/EC	

Hello@simonclarke.co.uk  
www.simonclarke.co.uk