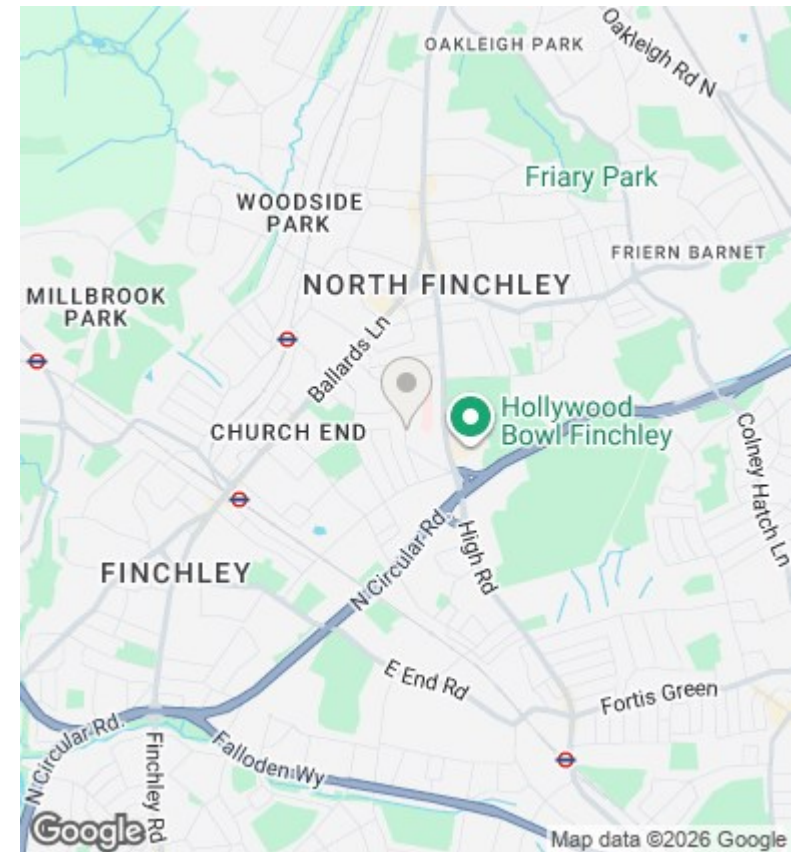
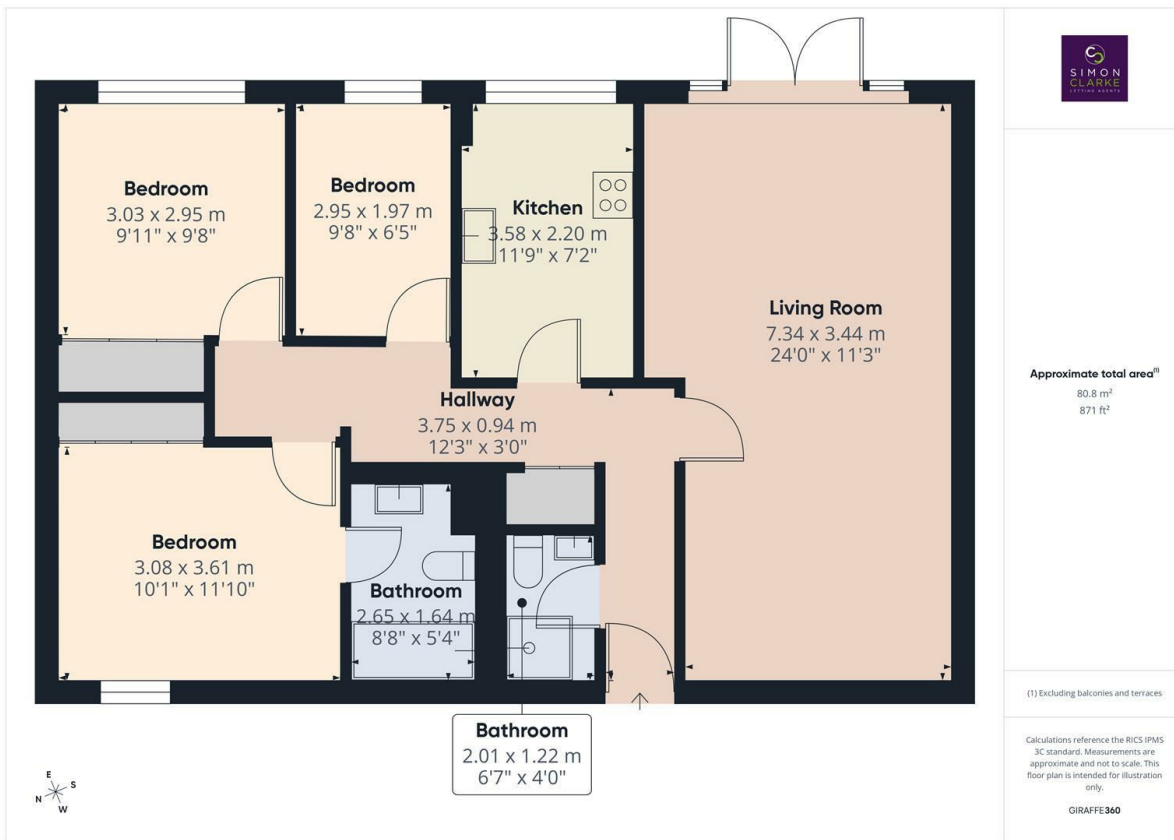




Bow Lane, London, N12 0JL

£2,500 Per Calendar Month

- Ground floor three bedroom, 2 bathroom apartment in a purpose-built block
- Master bedroom with fitted wardrobes and en-suite bathroom
- Deposit £2880
- Available from 23rd May 2026
- Private garden with direct access from the reception room; garden maintenance included
- video entryphone system
- Part furnished / unfurnished
- Modern kitchen with integrated appliances including double oven and dishwasher
- wooden flooring throughout
- Council tax band E



Directions

Viewings

Viewings by arrangement only. Call 02083499000 to make an appointment.

Council Tax Band

E

EPC Rating:

C

Energy Efficiency Rating		
	Current	Potential
<i>Very energy efficient - lower running costs</i>		
(92 plus) A		
(81-91) B		
(69-80) C	80	80
(55-68) D		
(39-54) E		
(21-38) F		
(1-20) G		
<i>Not energy efficient - higher running costs</i>		
England & Wales	EU Directive 2002/91/EC	