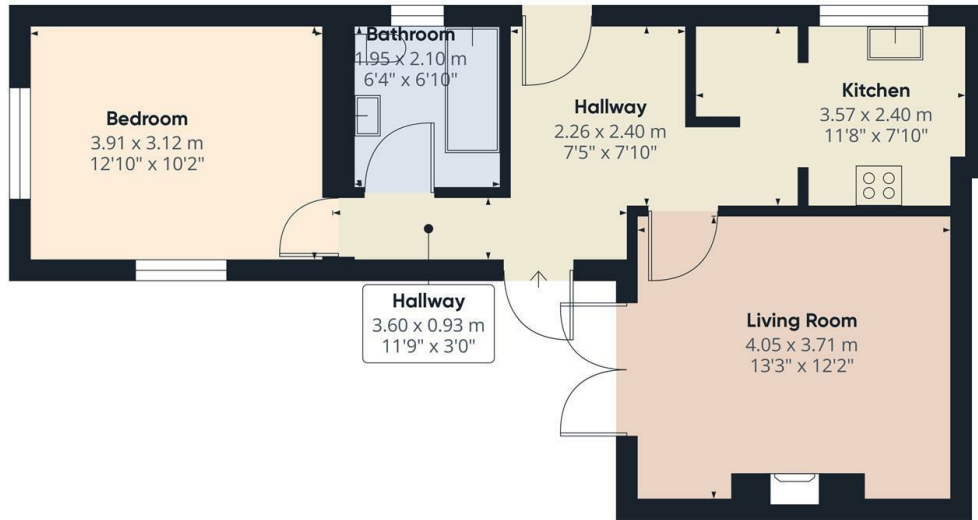




Station Road, London, N3 2SB

£1,695 PCM

- 1 Bedroom apartment
- Fitted carpets throughout
- Available for long term tenancy (initial 12 months)
- Available from 16th May 2026
- Own south facing private garden
- Double bedroom with built in wardrobes
- Council tax BAND A
- Excellent location for transport and amenities
- Attractive high ceilings
- Unfurnished

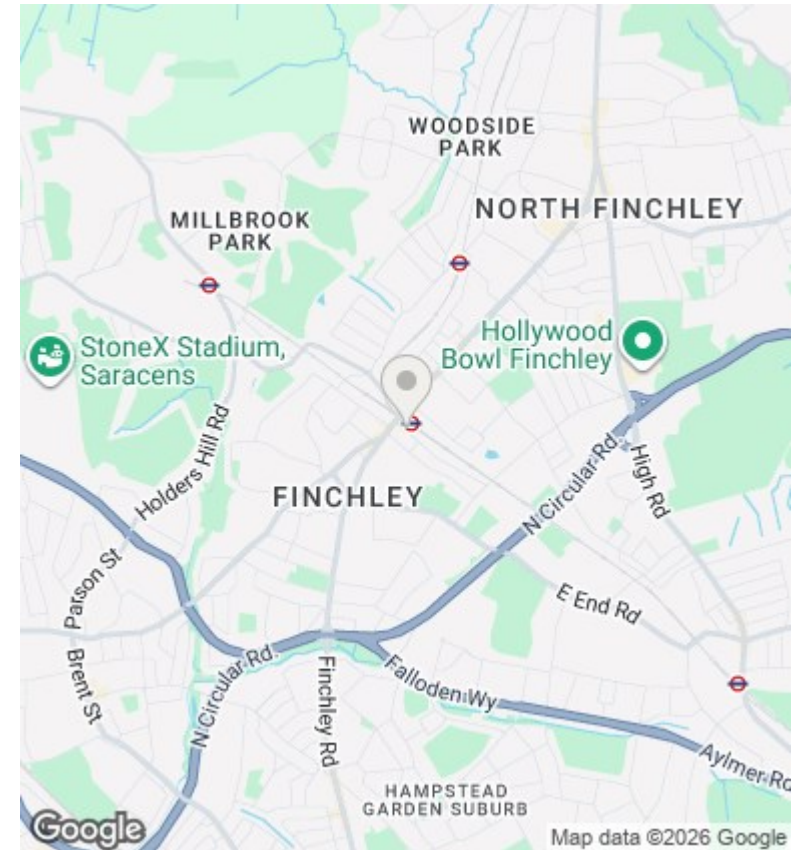


Approximate total area*
48.88 m²
526.1 ft²

(*) Excluding balconies and terraces

While every attempt has been made to ensure accuracy, all measurements are approximate, not to scale. This floor plan is for illustrative purposes only.

GIRAFFE360



Directions

Viewings

Viewings by arrangement only. Call 02083499000 to make an appointment.

Council Tax Band

A

EPC Rating:

C

Energy Efficiency Rating		
	Current	Potential
Very energy efficient - lower running costs		
(92 plus) A		
(81-91) B		
(69-80) C	73	74
(55-68) D		
(39-54) E		
(21-38) F		
(1-20) G		
Not energy efficient - higher running costs		
England & Wales	EU Directive 2002/91/EC	