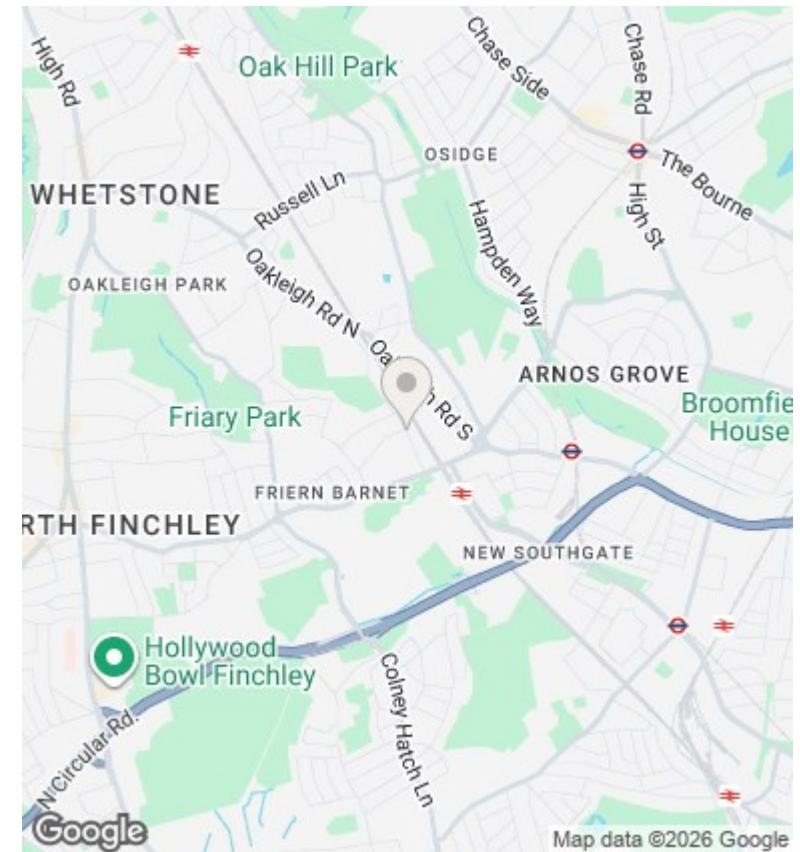
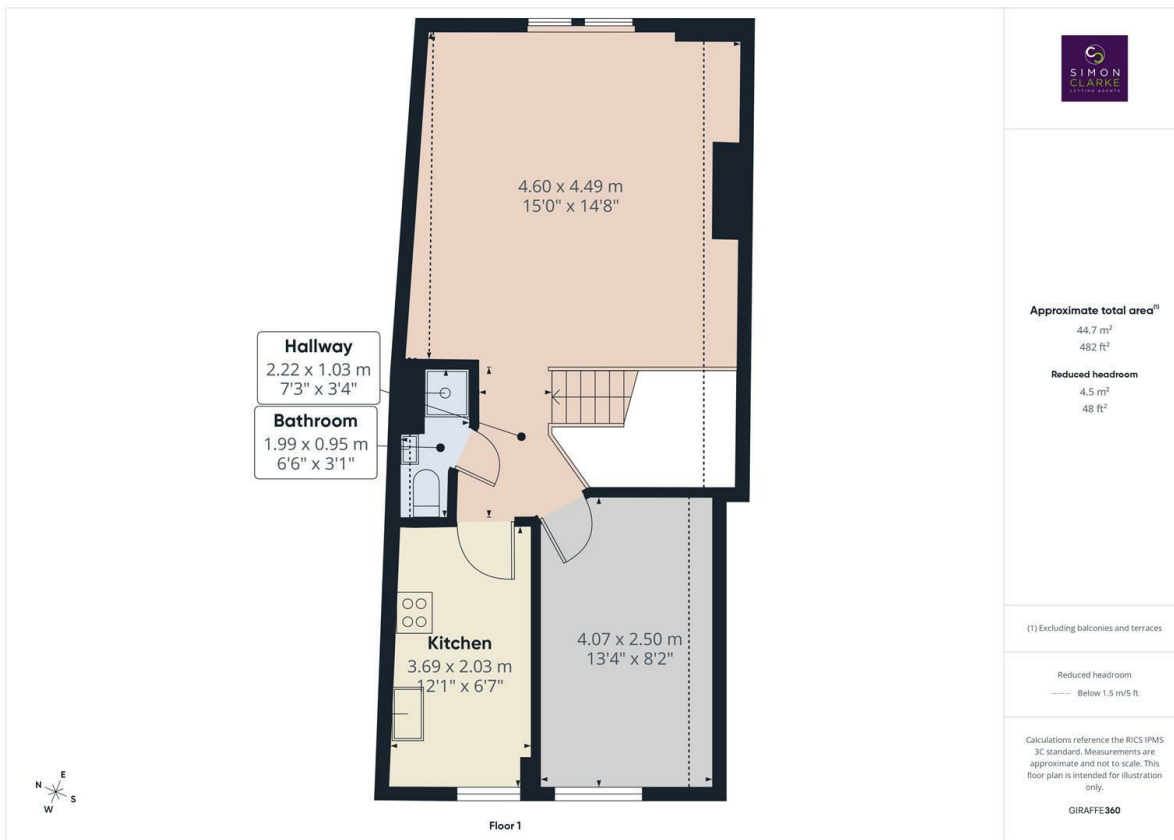




Holly Park Road, London, N11 3HA

£1,300 PCM

- Top floor 1 Bedroom converted apartment
- Short walk to New Southgate BR Station
- Available NOW
- Deposit: £1,500.00 (Equivalent to 5 weeks rent)
- NEWLY REDECORATED throughout
- Gas central heating / Double glazed
- Council Tax band B - £1,658.69 per annum
- Fitted carpets throughout
- Shower room only
- Unfurnished



Directions

Viewings

Viewings by arrangement only. Call 02083499000 to make an appointment.

Council Tax Band

B

EPC Rating:

D

