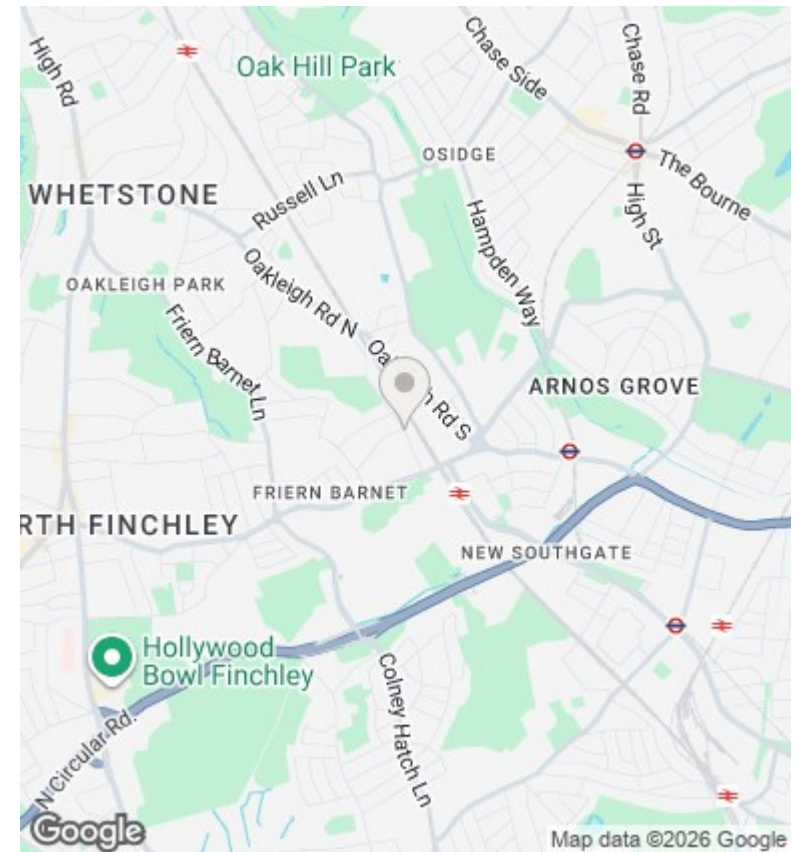
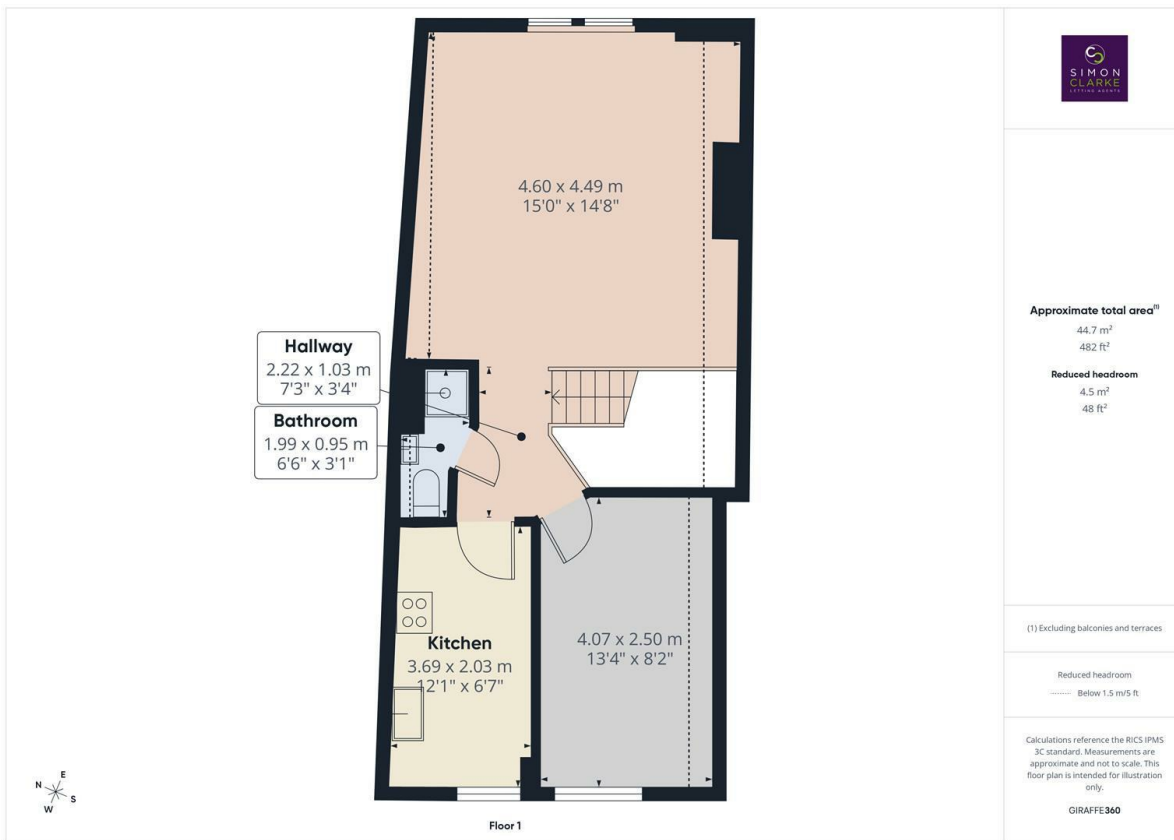




Holly Park Road, London, N11 3HA

£1,300 PCM

- Top floor 1 Bedroom converted apartment
- Short walk to New Southgate BR Station
- Deposit amount taken is £1,500.00
- Available NOW
- NEWLY REDECORATED throughout
- Gas central heating / Double glazed
- Council Tax band B
- Fitted carpets throughout
- Shower room only
- Unfurnished



Directions

Viewings

Viewings by arrangement only. Call 02083499000 to make an appointment.

Council Tax Band

B

EPC Rating:

D

Energy Efficiency Rating		
	Current	Potential
<i>Very energy efficient - lower running costs</i>		
(92 plus) A		
(81-91) B		
(69-80) C		
(55-68) D	58	65
(39-54) E		
(21-38) F		
(1-20) G		
<i>Not energy efficient - higher running costs</i>		
England & Wales	EU Directive 2002/91/EC	