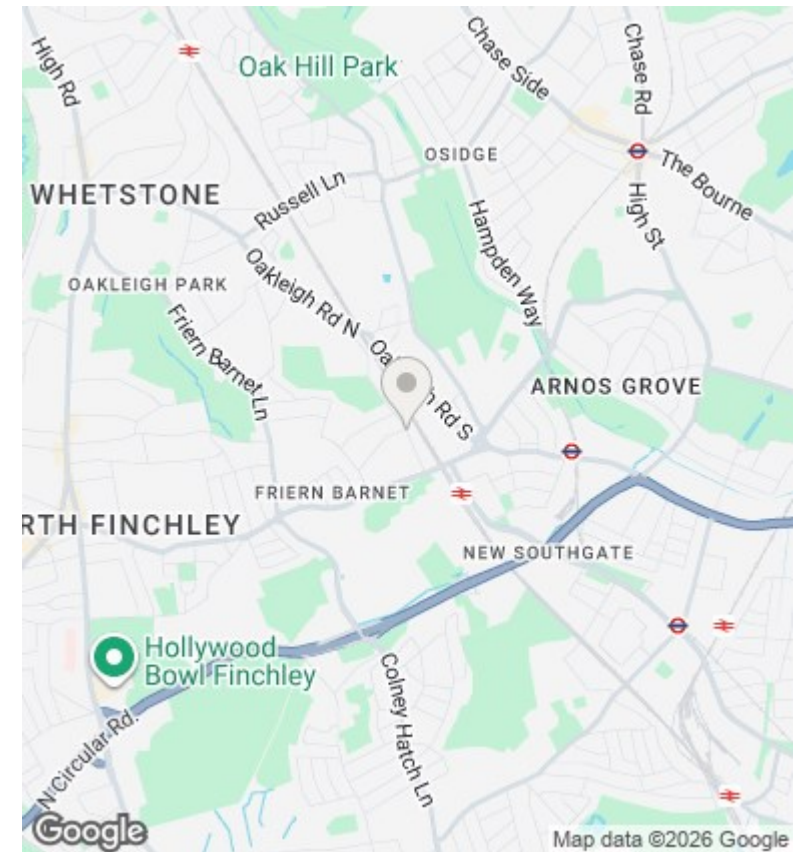
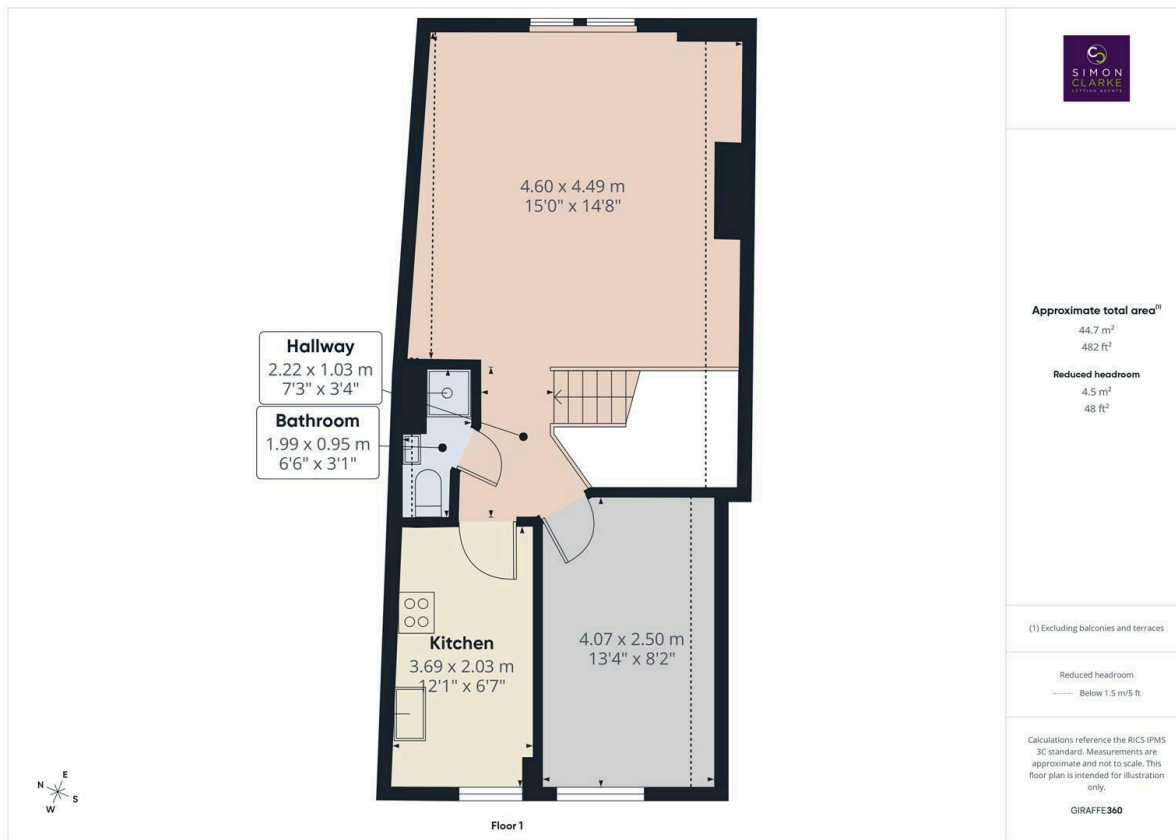




Holly Park Road, London, N11 3HA

£1,300 PCM

- Top floor 1 Bedroom converted apartment
- Short walk to New Southgate BR Station
- Deposit amount taken is £1,500.00
- Available NOW
- NEWLY REDECORATED throughout
- Gas central heating / Double glazed
- Council Tax band B
- Fitted carpets throughout
- Shower room only
- Unfurnished



## Directions

## Viewings

Viewings by arrangement only. Call 02083499000 to make an appointment.

## Council Tax Band

B

## EPC Rating:

D

