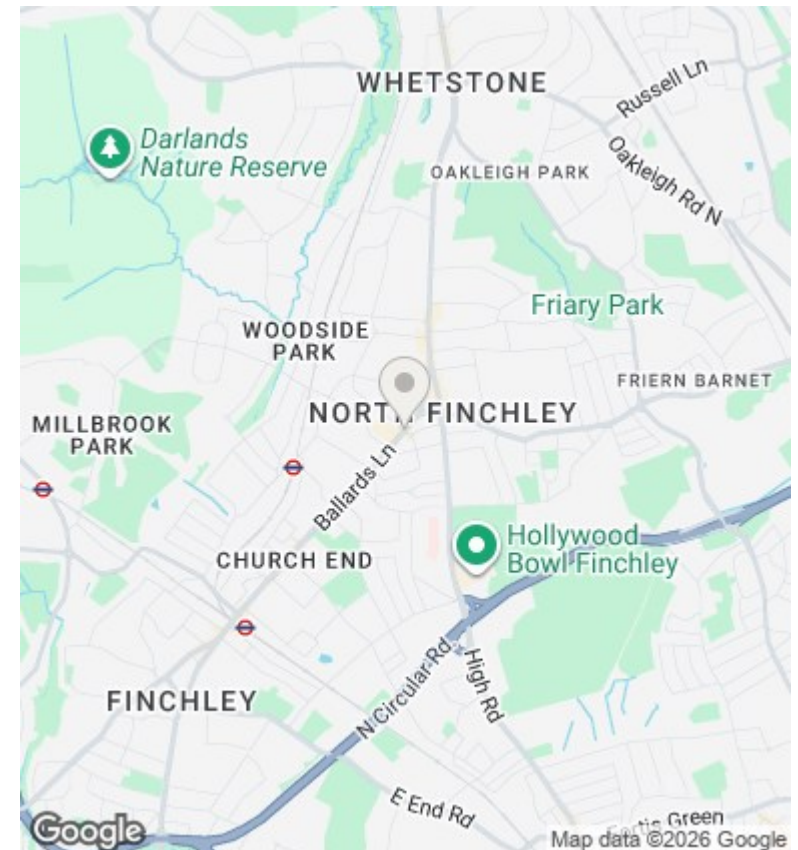
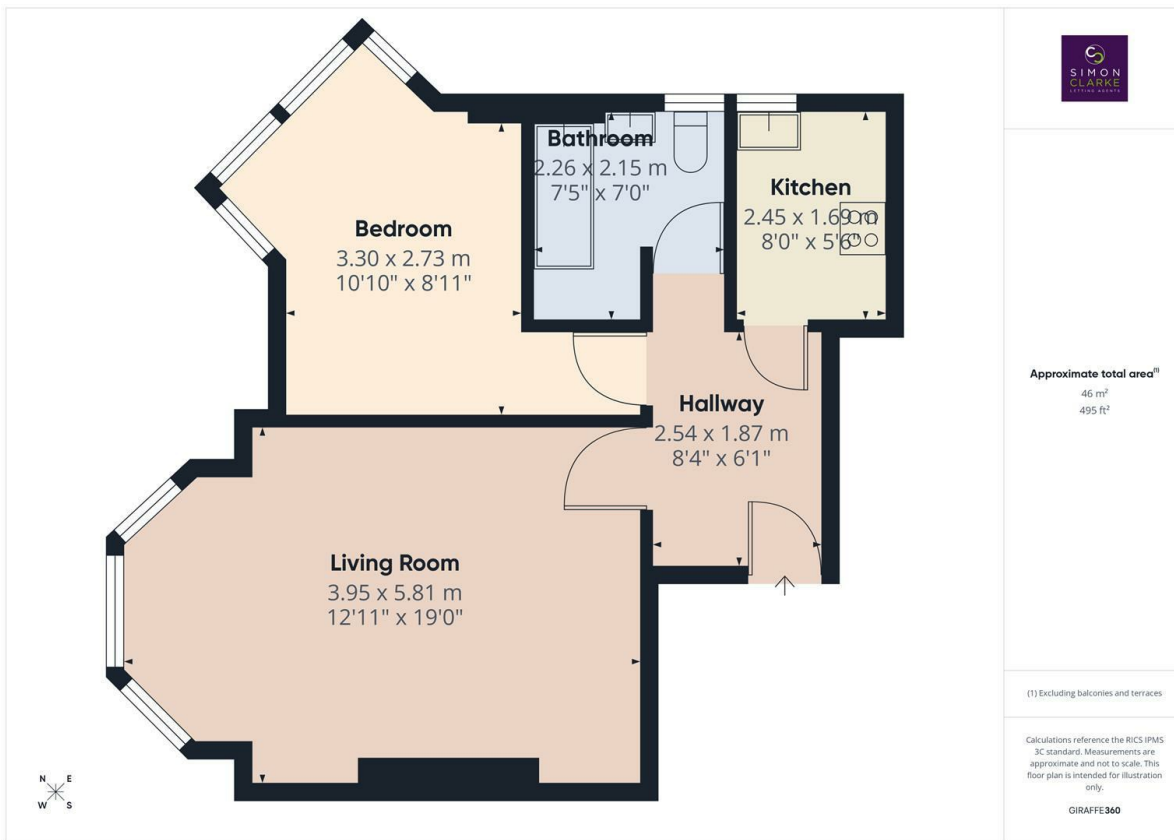


## Ballards Lane, London, N12 0ET

£1,475 PCM

- First floor 1 Bedroom flat
- Fantastic location to amenities & transport links
- Available on long term tenancy (initial 12 months)
- Available 18th May 2026
- RENT INCLUDES WATER RATES
- Large double bedroom with bay window
- Council Tax band C - £1,809.34 per annum
- PROPERTY TO BE REDECORATED & HAVE NEW CARPETS
- Fitted kitchen with appliances
- Unfurnished



## Directions

## Viewings

Viewings by arrangement only. Call 02083499000 to make an appointment.

## Council Tax Band

C

## EPC Rating:

E

