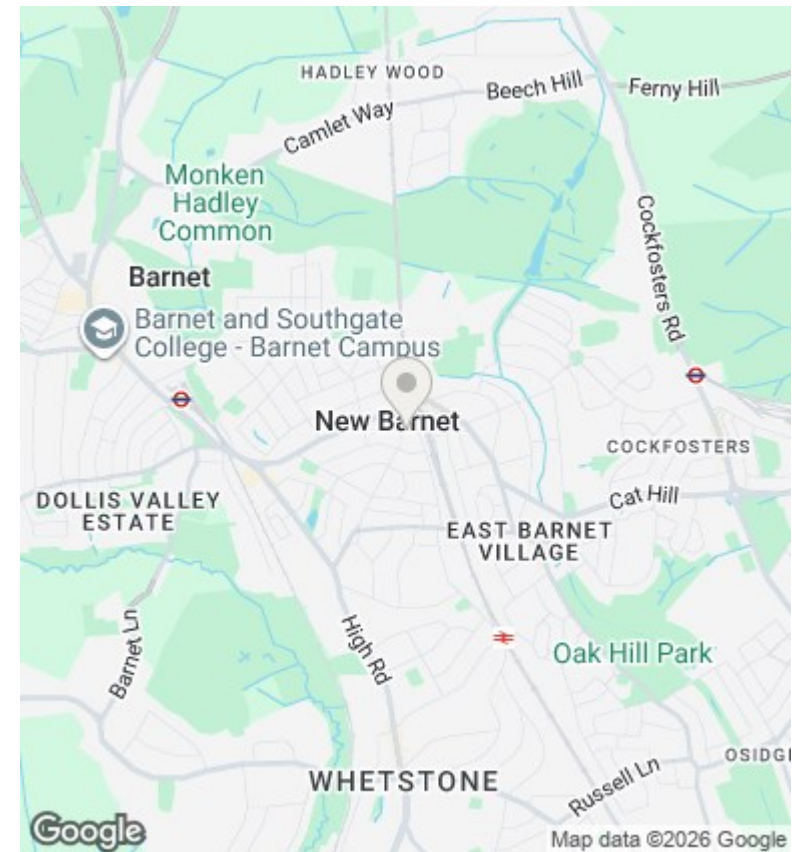
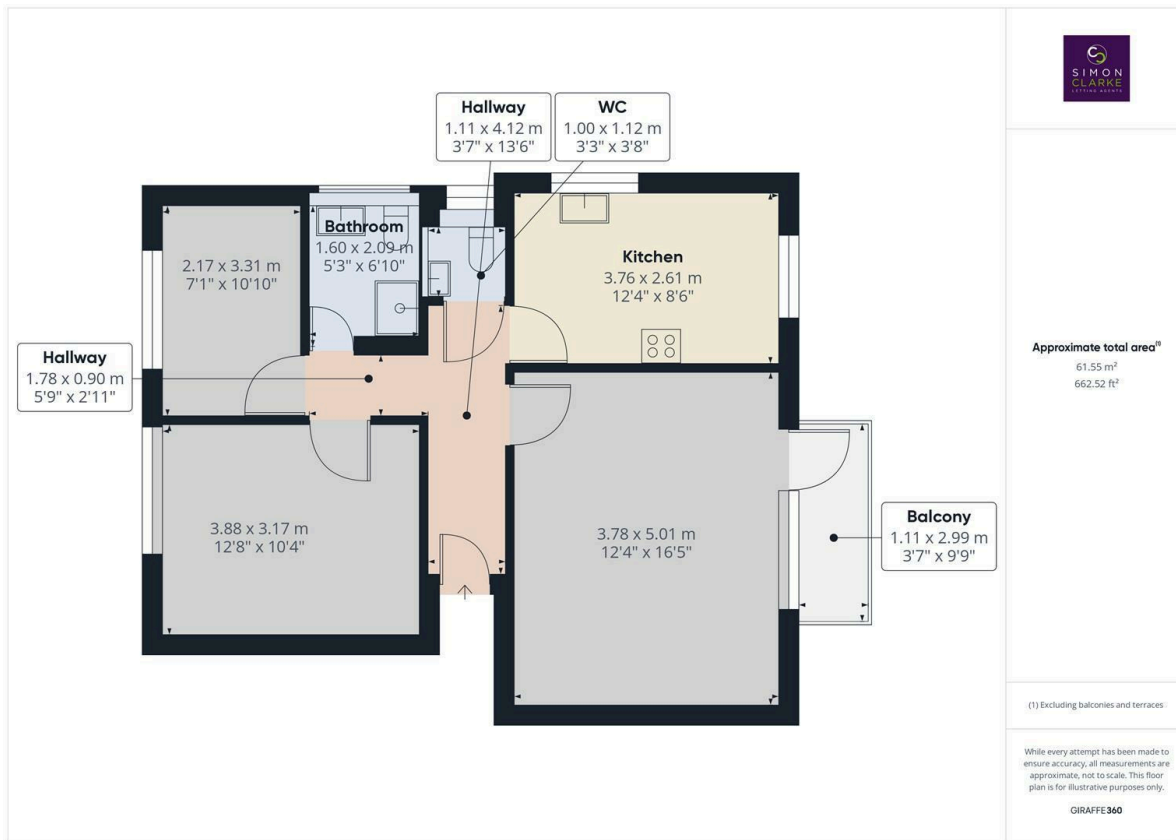




Lyonsdown Road, New Barnet, EN5 1LS

£1,850 PCM

- 2 Bedroom top floor apartment
- Landscaped communal gardens
- Available for long term tenancy (Initial 12 months)
- Available from 1st May 2026
- Located close to New Barnet BR Station
- Spacious living room with balcony
- Unfurnished
- Stylish shower room & additional guest cloakroom
- Deposit: £2250
- Council Tax band D



Directions

Viewings

Viewings by arrangement only. Call 02083499000 to make an appointment.

Council Tax Band

D

EPC Rating:

C

