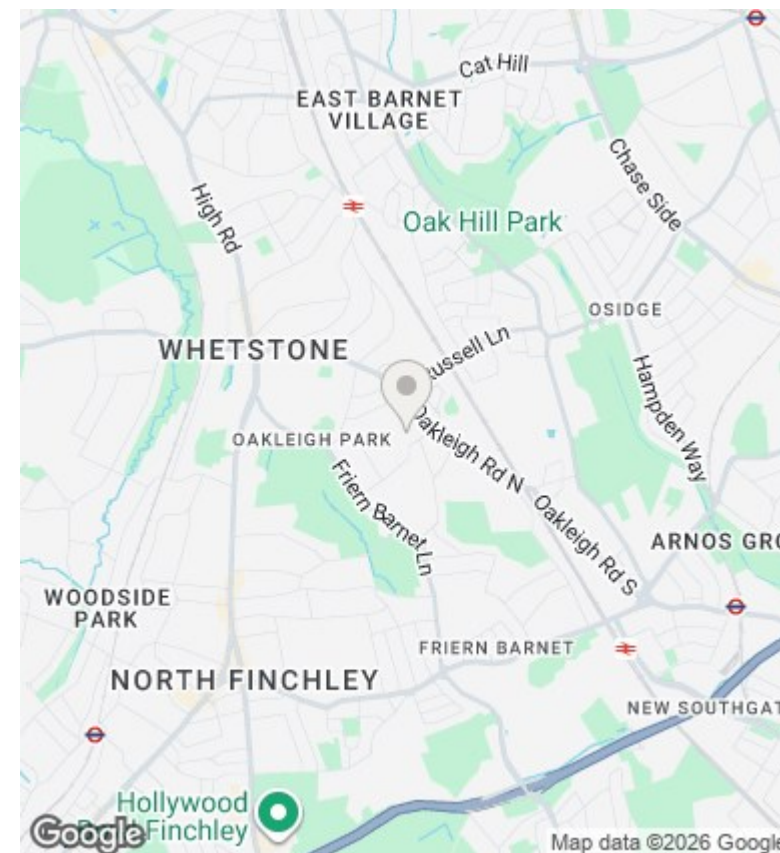
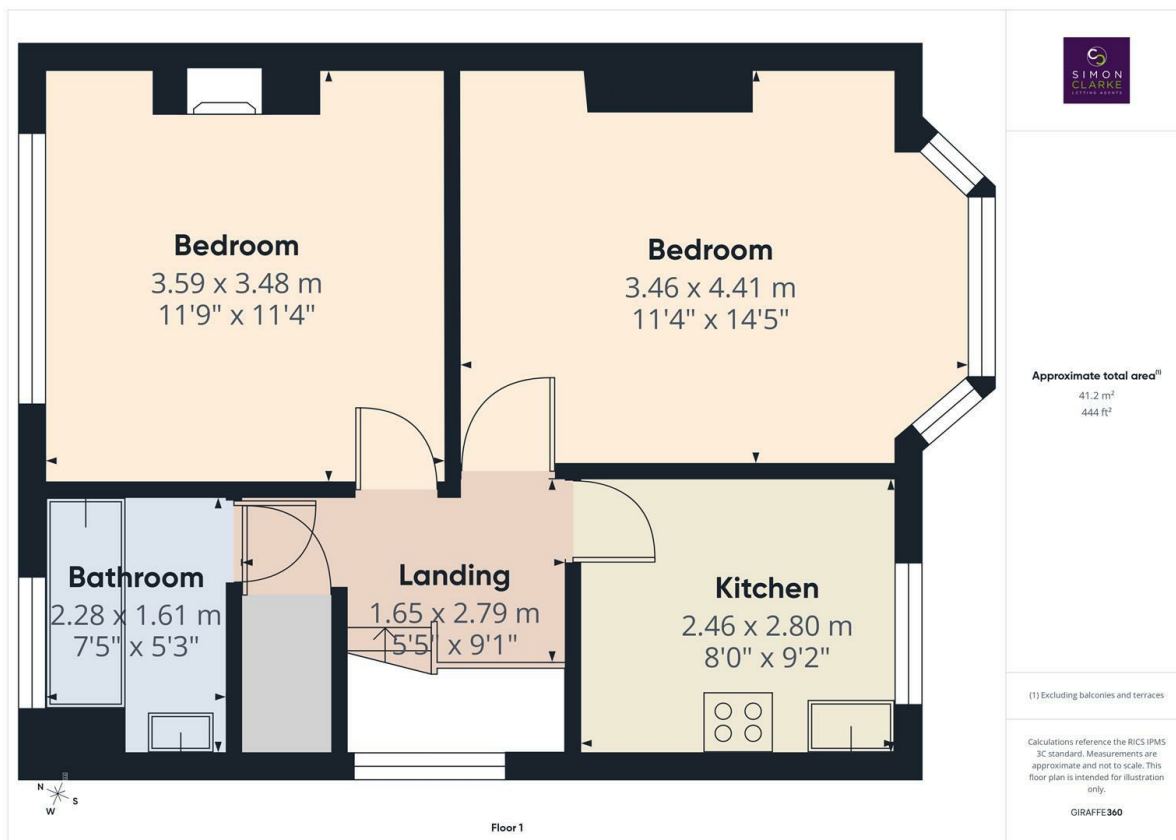




Oakleigh Crescent, London, N20 0BS

£1,400 PCM

- One bedroom first floor conversion flat
- Fitted carpets
- Available on long term tenancy
- Available from 16th February 2026
- Fitted kitchen with appliances
- Conveniently located close to shops and amenities
- Unfurnished
- Own private garden
- Separate WC to bathroom
- Council tax band C



Directions

7 Ballards Lane, Finchley, London, N3 1UX
02083499000

Viewings

Viewings by arrangement only. Call 02083499000 to make an appointment.

Council Tax Band

C

EPC Rating:

Energy Efficiency Rating		
	Current	Potential
Very energy efficient - lower running costs		
(92 plus) A		
(81-91) B		
(69-80) C		
(55-68) D		
(39-54) E		
(21-38) F		
(1-20) G		
Not energy efficient - higher running costs		
England & Wales	EU Directive 2002/91/EC	

Hello@simonclarke.co.uk
www.simonclarke.co.uk