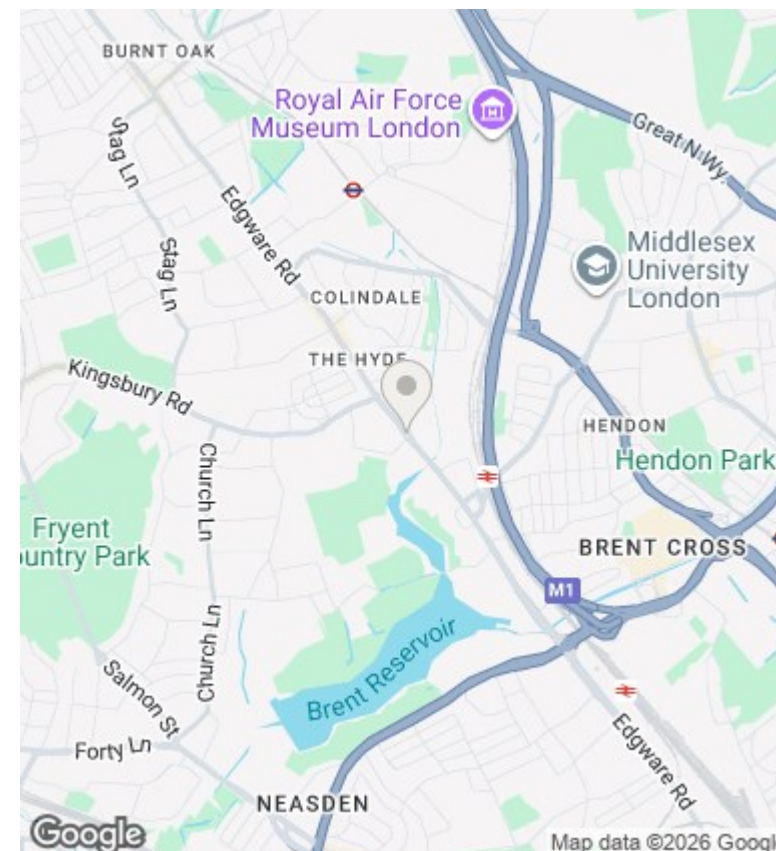
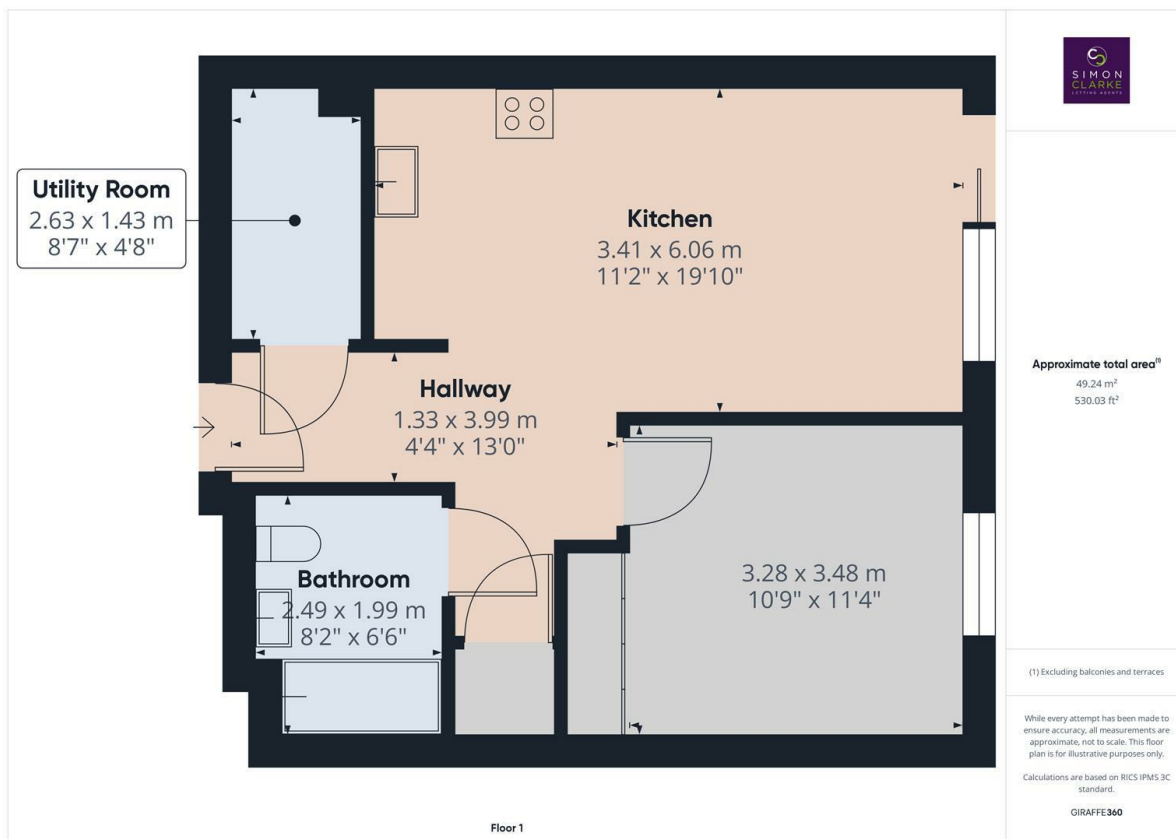


4 Henshaw Parade, London, NW9 6GJ

£1,700 Per Calendar Month

- Managed by Simon Clarke Letting Agents
- Serviced by 24 hour concierge
- Available on long term tenancy (initial 12 months)
- Available Now
- Impressive 1 bedroom apartment with balcony and roof top garden
- Set with 1.5 Acre Park with 175m long oxbow lake
- Unfurnished
- Access to residents only gym and cinema
- Secure bicycle storage available to residents
- Council Tax Band C - £1,809.34 p/a



Directions

Viewings

Viewings by arrangement only. Call 02083499000 to make an appointment.

Council Tax Band

New Build

EPC Rating:

Energy Efficiency Rating		
	Current	Potential
Very energy efficient - lower running costs		
(92 plus) A		
(81-91) B		
(69-80) C		
(55-68) D		
(39-54) E		
(21-38) F		
(1-20) G		
Not energy efficient - higher running costs		
England & Wales	EU Directive 2002/91/EC	