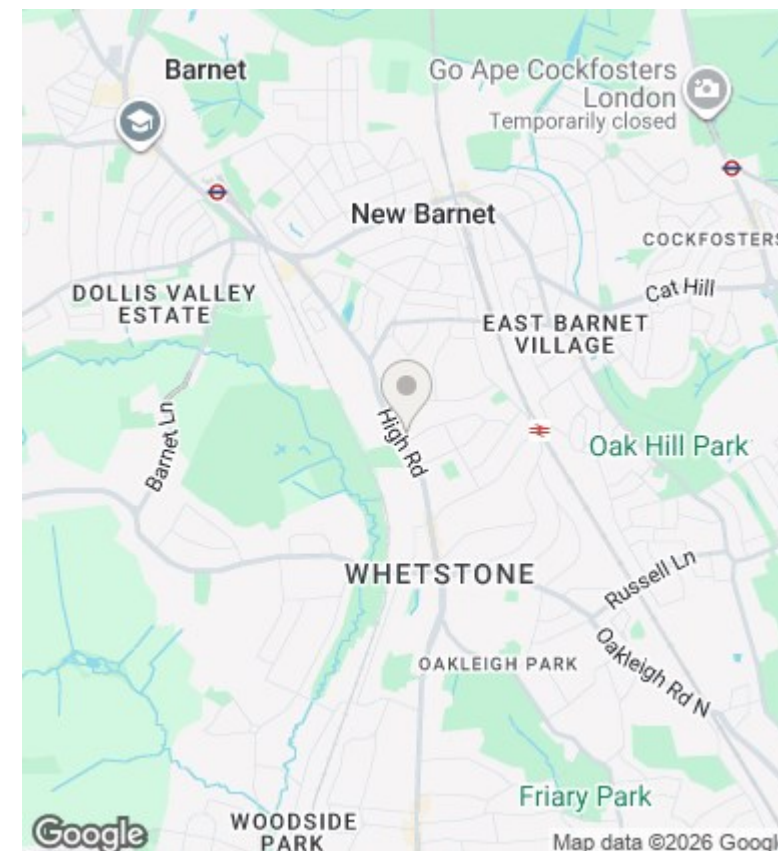
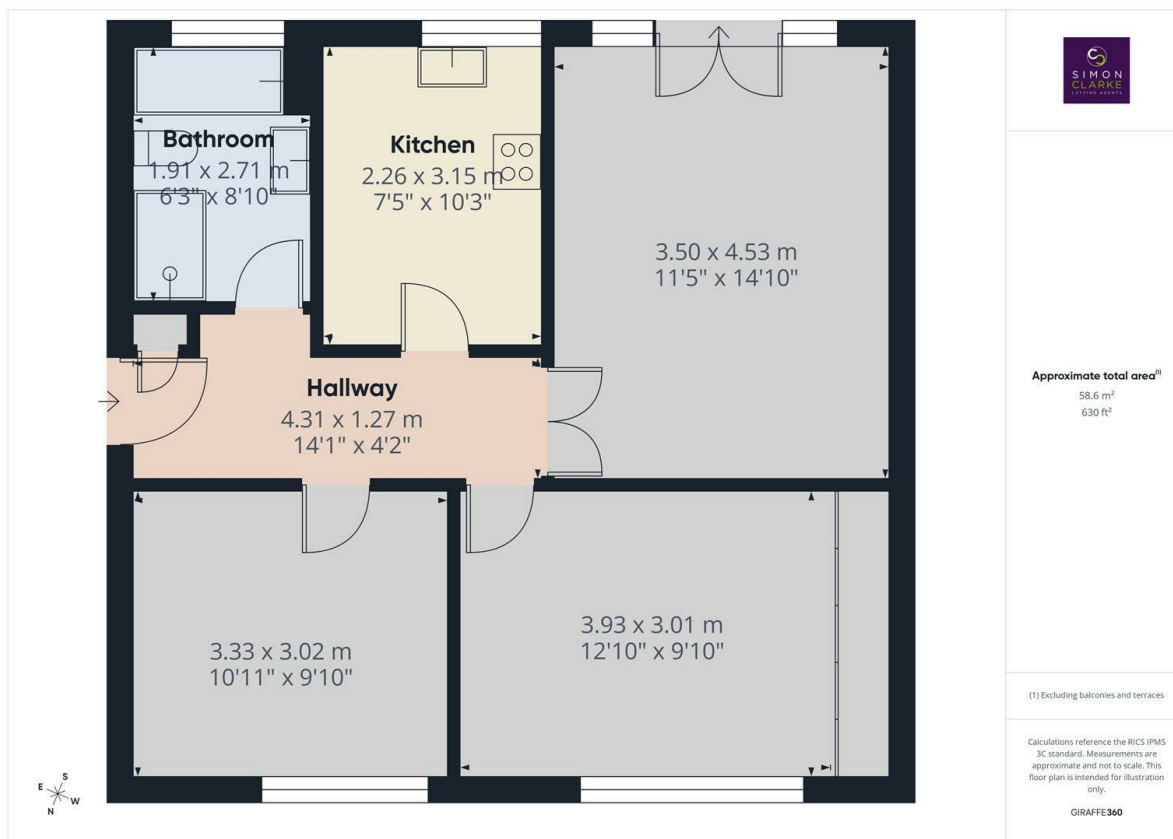




Franklin Close, London, N20 9QT

£1,700 PCM

- 2 Bedroom apartment in purpose built block
- Ground floor with secure entry phone
- Juliet balcony from lounge
- Available NOW
- Modern fitted kitchen with appliances including dishwasher
- Close to a vast array of amenities and transport links
- Council tax band D
- Large 4-piece bathroom suite
- Attractive communal rear gardens
- Unfurnished



Directions

7 Ballards Lane, Finchley, London, N3 1UX
02083499000

Viewings

Viewings by arrangement only. Call 02083499000 to make an appointment.

Council Tax Band

D

EPC Rating:

D

Energy Efficiency Rating		
	Current	Potential
Very energy efficient - lower running costs		
(92 plus) A		
(81-91) B		
(69-80) C		78
(55-68) D	67	
(39-54) E		
(21-38) F		
(1-20) G		
Not energy efficient - higher running costs		
England & Wales	EU Directive 2002/91/EC	

Hello@simonclarke.co.uk
www.simonclarke.co.uk