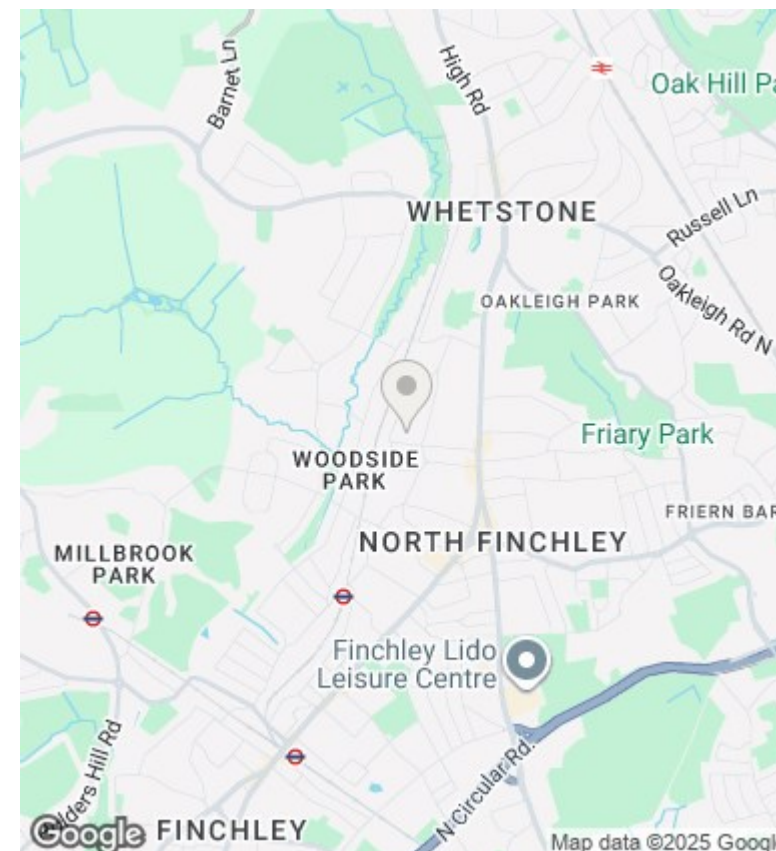
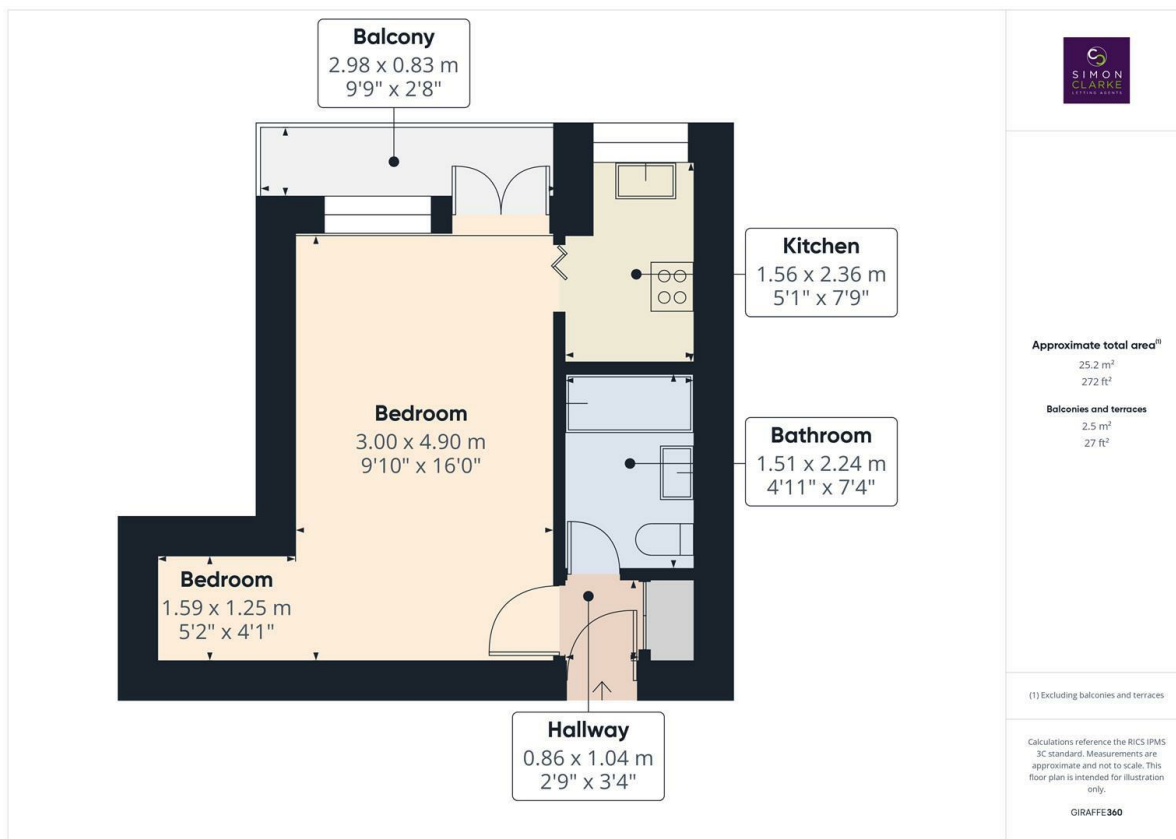


Ashbourne Close, London, N12 8SA

£1,100 PCM

- Modern ground floor studio near Woodside Park Tube Station
- Fully tiled bathroom suite
- Available on long term tenancy (initial 12 months)
- Available from 10th January 2026
- Bright studio room with laminate flooring and private balcony and built in wardrobes
- Unreserved off-road parking
- Council tax band B - £1,583.19pa
- Fitted kitchen with appliances including gas hob, fridge, washing machine and microwave
- Gas central heating, double glazing and entryphone system
- Part-furnished



## Directions

## Viewings

Viewings by arrangement only. Call 02083499000 to make an appointment.

## Council Tax Band

B

## EPC Rating:

C

Energy Efficiency Rating		
	Current	Potential
Very energy efficient - lower running costs		
(92-plus) <b>A</b>		
(81-91) <b>B</b>		
(69-80) <b>C</b>	73	76
(55-68) <b>D</b>		
(39-54) <b>E</b>		
(21-38) <b>F</b>		
(1-20) <b>G</b>		
Not energy efficient - higher running costs		
<b>England &amp; Wales</b>	EU Directive 2002/91/EC	