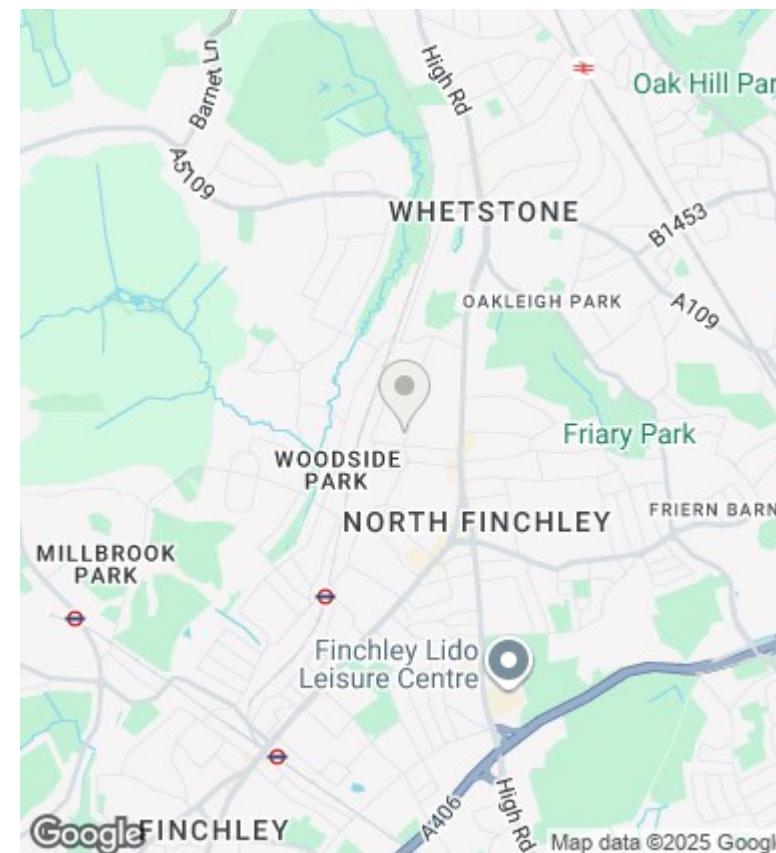
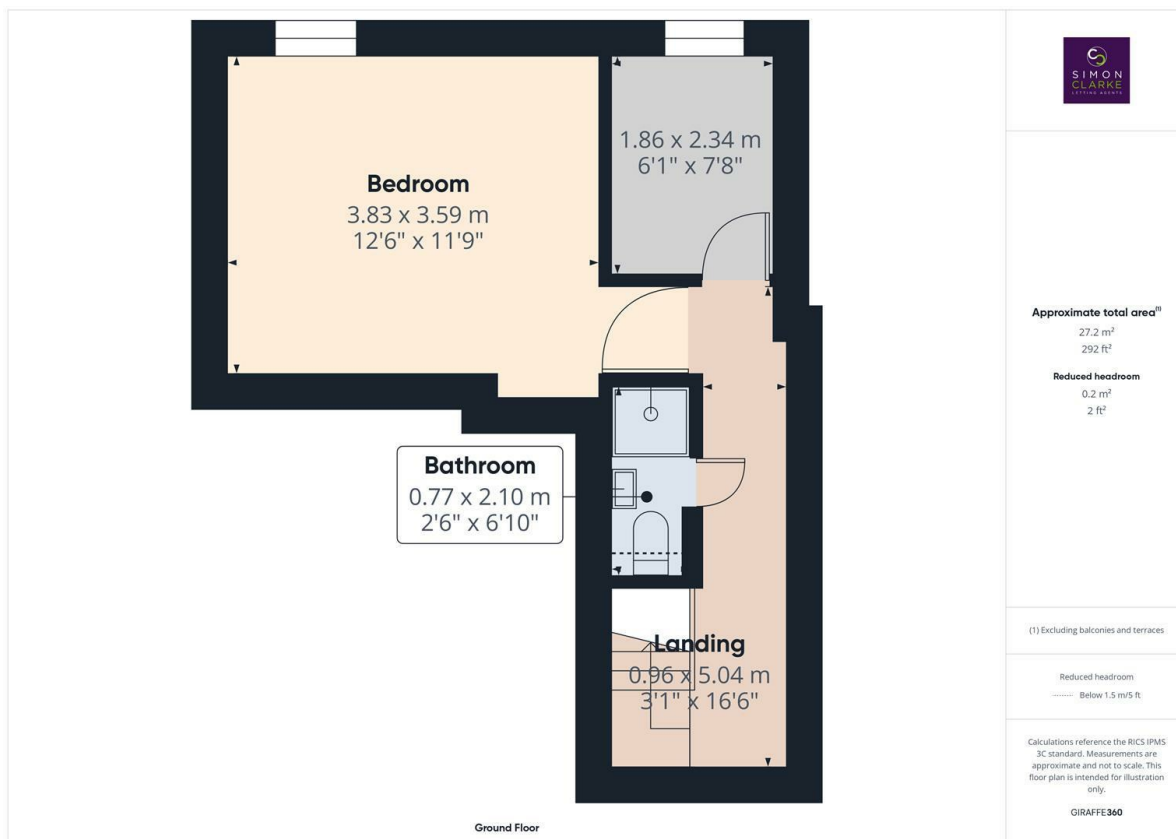




Woodside Avenue, London, N12 8AX

£2,600 Per Calendar Month

- A Beautiful 2-bedroom plus study duplex apartment
- Two fully tiled bathrooms
- Wooden floors throughout
- Available NOW / Council tax to be confirmed
- Professionally managed by Simon Clarke Letting Agents
- Versatile study room / store room
- Available on long term tenancy
- Set within an exclusive period conversion
- Access into a large secluded garden with patio, with maintenance included all year round
- Unfurnished



## Directions

## Viewings

Viewings by arrangement only. Call 02083499000 to make an appointment.

## Council Tax Band

New Build

## EPC Rating:

C

Energy Efficiency Rating		
	Current	Potential
Very energy efficient - lower running costs		
(92 plus) A		
(81-91) B		
(69-80) C	73	73
(55-68) D		
(39-54) E		
(21-38) F		
(1-20) G		
Not energy efficient - higher running costs		
England & Wales	EU Directive 2002/91/EC	