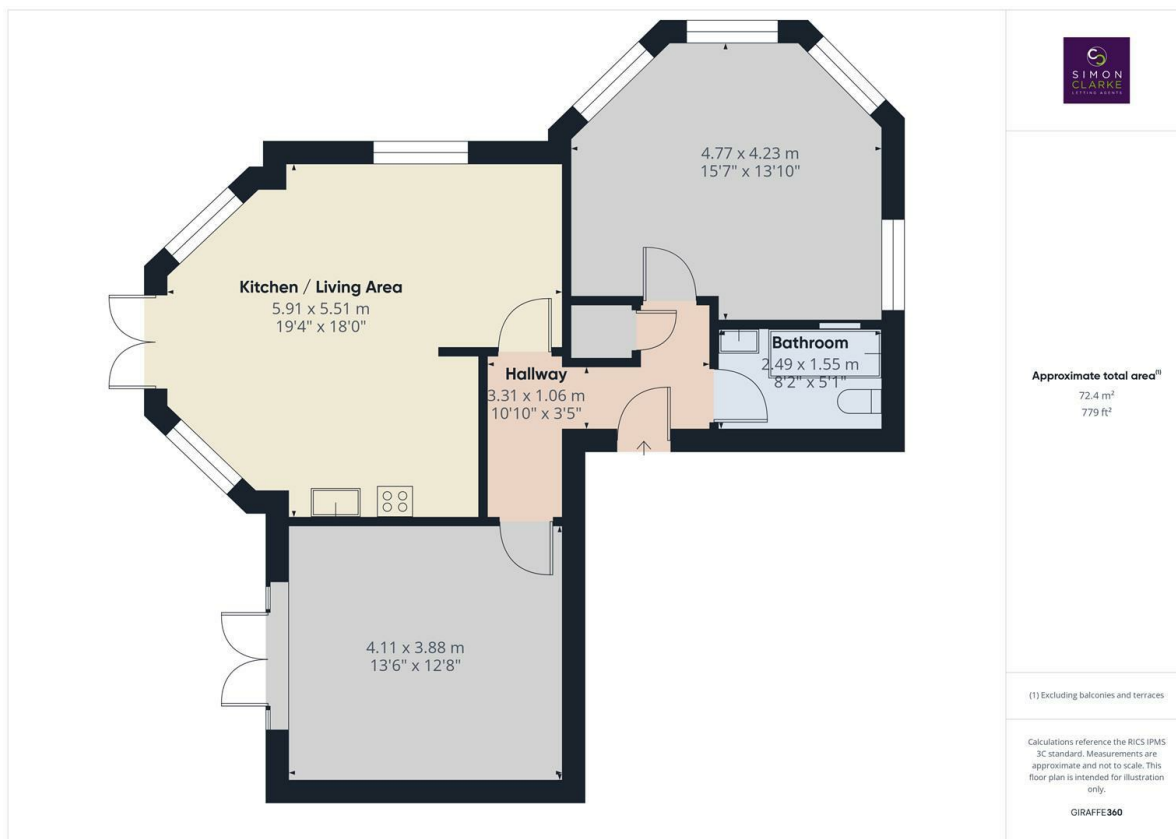




Woodside Avenue, London, N12 8AX

£2,450 Per Calendar Month

- Stunning 2 bedroom raised ground floor apartment set within a period home
- Brand new fitted kitchen with Bosch appliances
- Unreserved off street parking available
- Available NOW / Council tax to be confirmed / Unfurnished
- Newly refurbished throughout to a high standard
- High ceilings and large windows make this property bright and spacious
- Secure video entry phone
- Direct access onto large private garden
- Short walk to Woodside Park Tube & North Finchley amenities
- Available on long term tenancy (initial 12 months)



Directions

Viewings

Viewings by arrangement only. Call 02083499000 to make an appointment.

Council Tax Band

New Build

EPC Rating:

C

