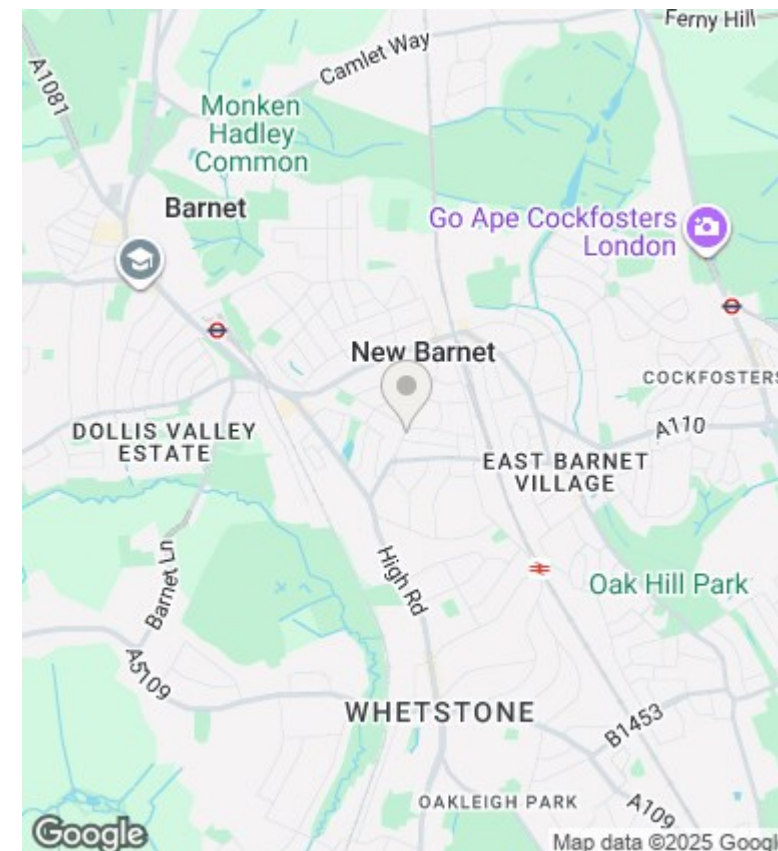
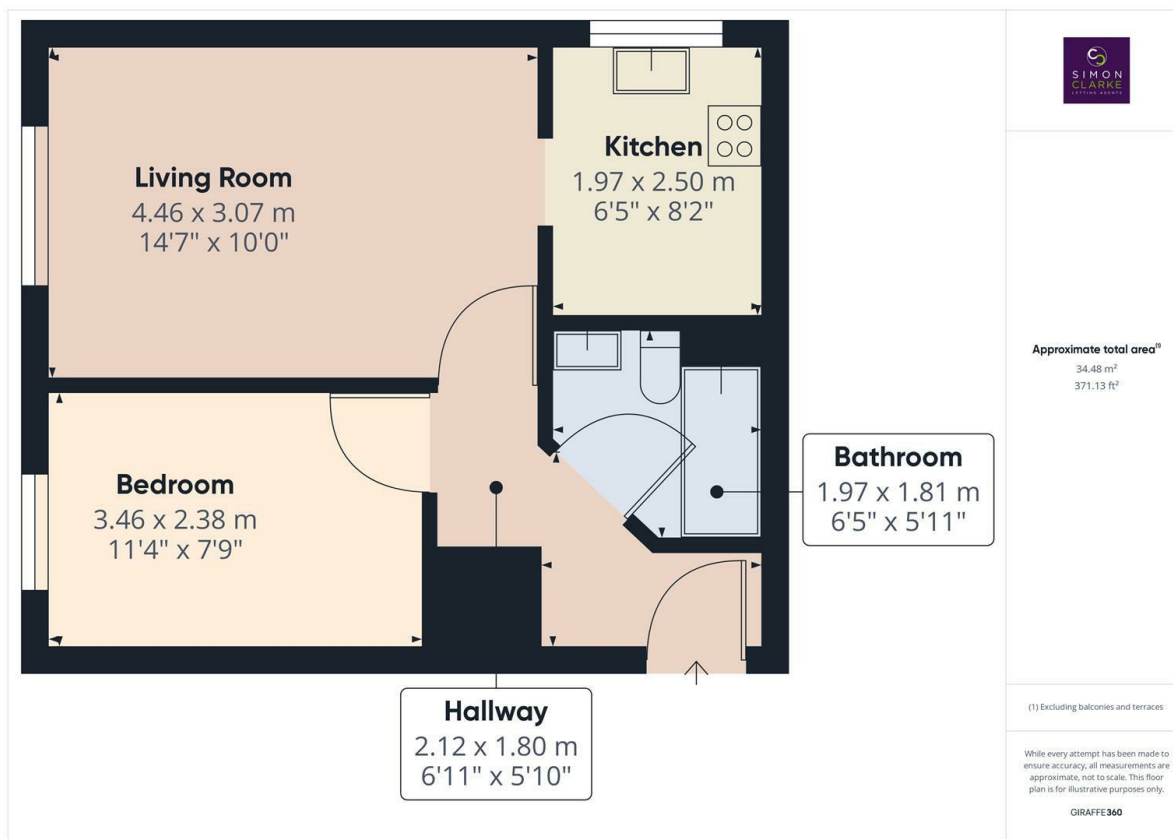




Lyonsdown Road, Barnet, EN5 1SX

£1,300 PCM

- Purpose built 1 bedroom apartment
- Allocated off street parking
- Council tax band C - £1,809.34 per annum
- Available from 22nd November 2025
- Located a short walk to New Barnet BR Station
- Laminate wooden flooring
- Available on long term tenancy (initial 12 months)
- Own front door
- Fitted kitchen with appliances
- Unfurnished



Directions

Viewings

Viewings by arrangement only. Call 02083499000 to make an appointment.

Council Tax Band

C

EPC Rating:

D

Energy Efficiency Rating		
	Current	Potential
Very energy efficient - lower running costs		
(92 plus) A		
(81-91) B		
(69-80) C		77
(55-68) D	67	
(39-54) E		
(21-38) F		
(1-20) G		
Not energy efficient - higher running costs		
England & Wales	EU Directive 2002/91/EC	