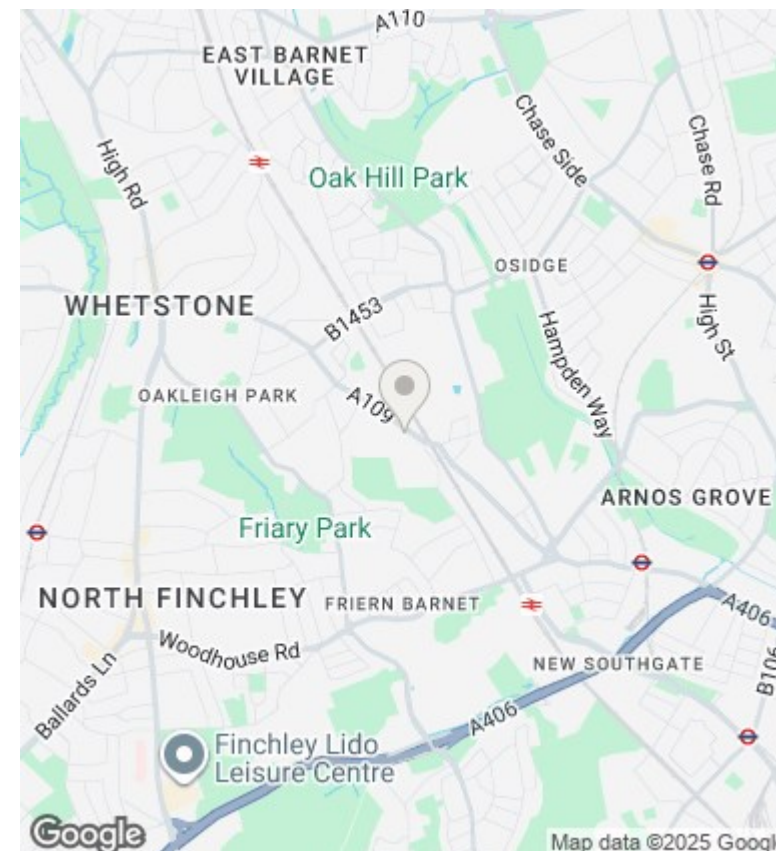
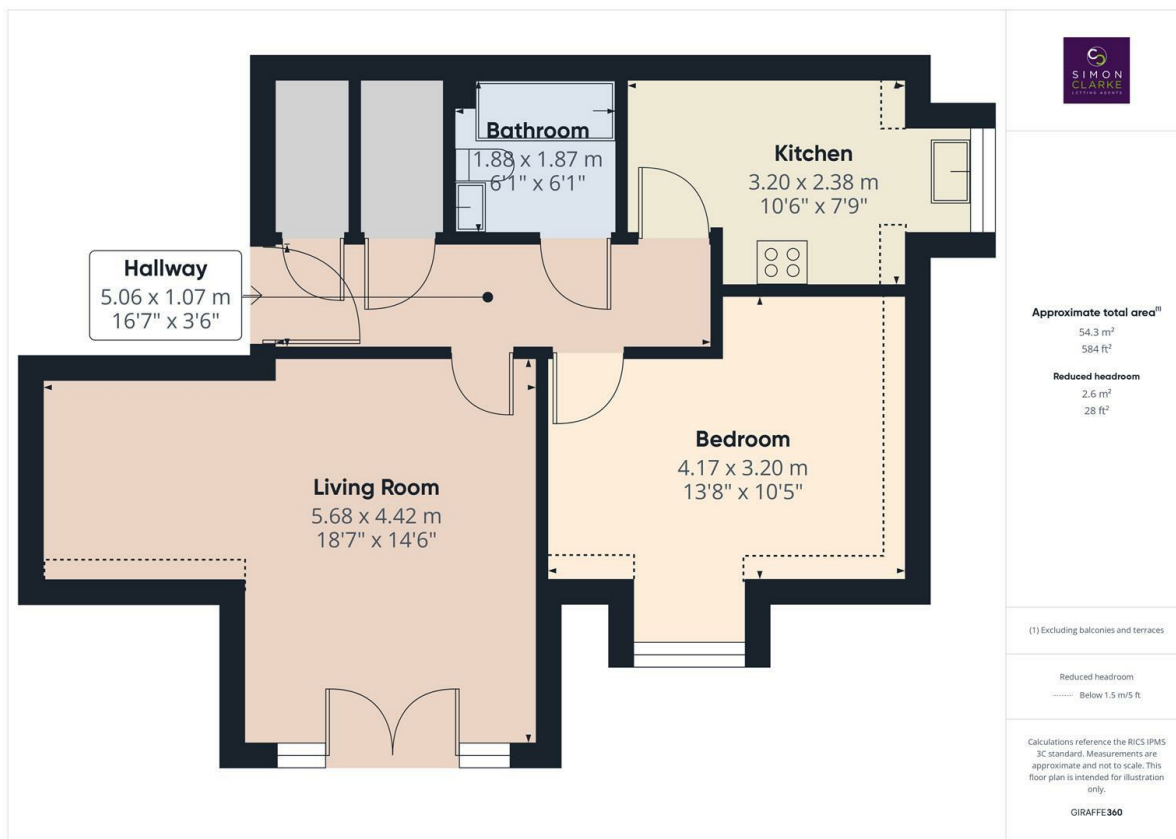




Oakleigh Road North, London, N20 0RW

£1,650 PCM

- Top floor 1 bedroom apartment
- Gas central heating & double glazing
- Council Tax Band E
- Available from 18th October 2025
- Large loft storage space with easy access via ladder
- Allocated off street parking
- Available on long term tenancy (initial 12 months)
- Spacious lounge with Juliet balcony
- Large fitted kitchen with appliances inc dishwasher
- Unfurnished



Directions

7 Ballards Lane, Finchley, London, N3 1UX
02083499000

Viewings

Viewings by arrangement only. Call 02083499000 to make an appointment.

Council Tax Band

E

EPC Rating:

C

Energy Efficiency Rating		
	Current	Potential
Very energy efficient - lower running costs		
(92 plus) A		
(81-91) B		
(69-80) C	77	79
(55-68) D		
(39-54) E		
(21-38) F		
(1-20) G		
Not energy efficient - higher running costs		
England & Wales	EU Directive 2002/91/EC	

Hello@simonclarke.co.uk
www.simonclarke.co.uk