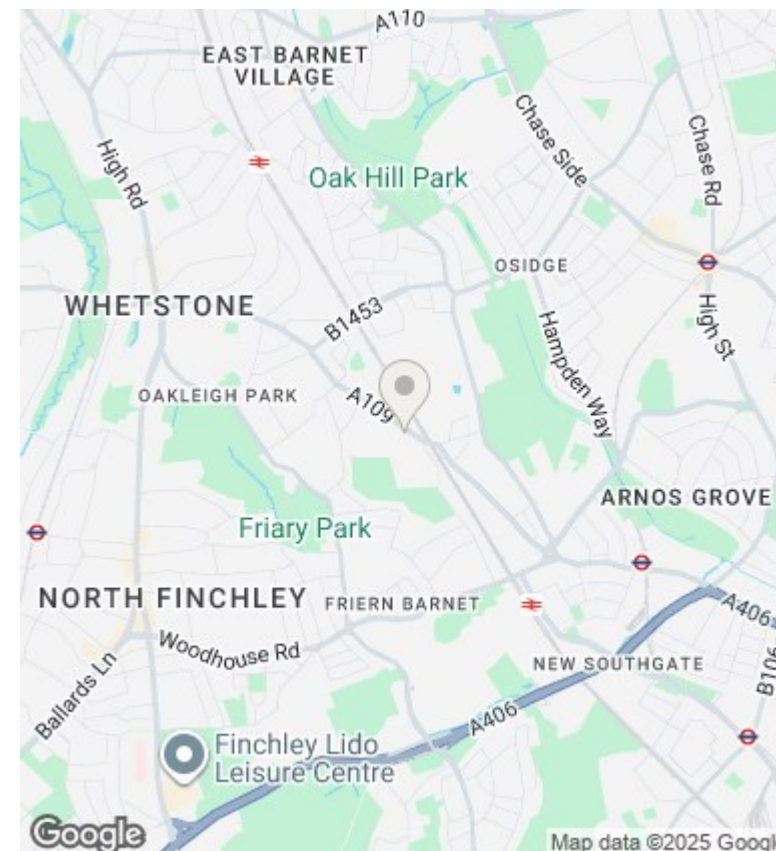
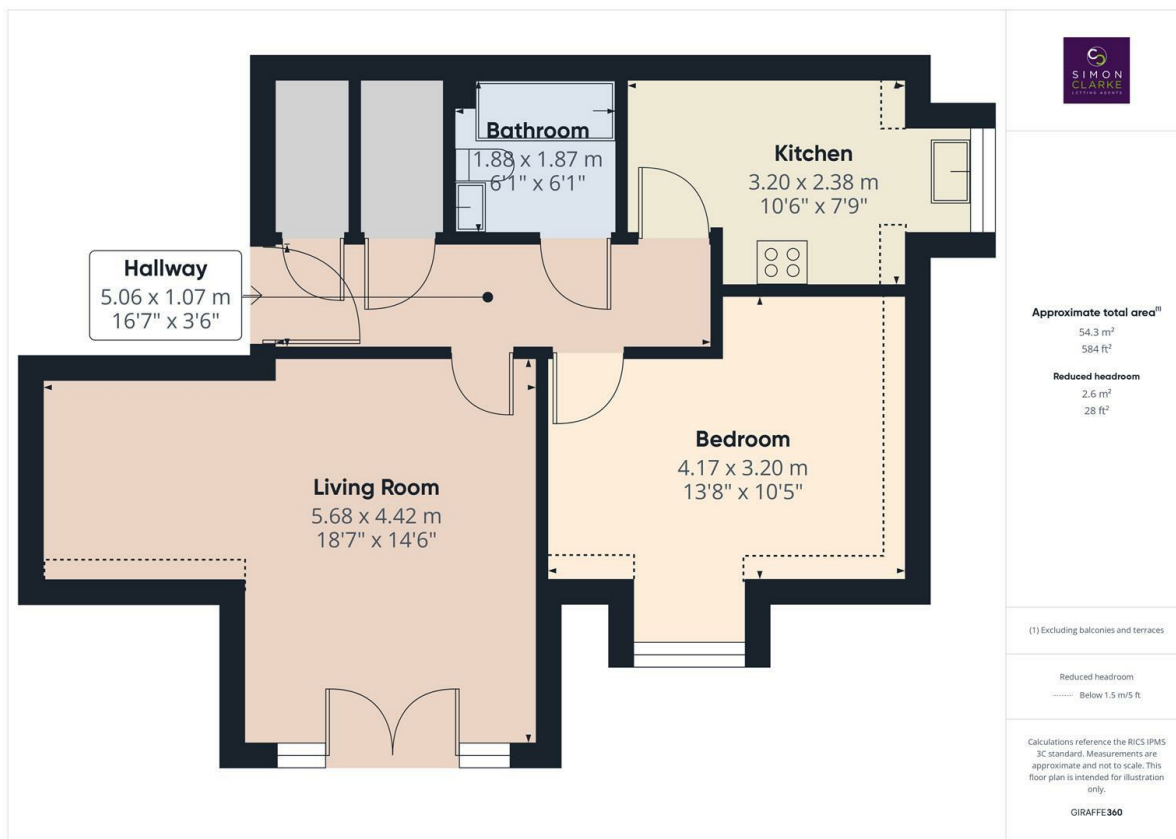




Oakleigh Road North, London, N20 0RW

£1,500 PCM

- Top floor 1 bedroom apartment
- Gas central heating & double glazing
- Council Tax Band E
- Deposit: £1900 (Equivalent to 5 weeks rent)
- Large loft storage space with easy access via ladder
- Allocated off street parking
- Unfurnished
- Spacious lounge with Juliet balcony
- Large fitted kitchen with appliances inc dishwasher
- Available from 18th October 2025



## Directions

7 Ballards Lane, Finchley, London, N3 1UX  
02083499000

## Viewings

Viewings by arrangement only. Call 02083499000 to make an appointment.

## Council Tax Band

E

## EPC Rating:

C

Energy Efficiency Rating		
	Current	Potential
Very energy efficient - lower running costs		
(92 plus) <b>A</b>		
(81-91) <b>B</b>		
(69-80) <b>C</b>	77	79
(55-68) <b>D</b>		
(39-54) <b>E</b>		
(21-38) <b>F</b>		
(1-20) <b>G</b>		
Not energy efficient - higher running costs		
<b>England &amp; Wales</b>	EU Directive 2002/91/EC	

Hello@simonclarke.co.uk  
www.simonclarke.co.uk