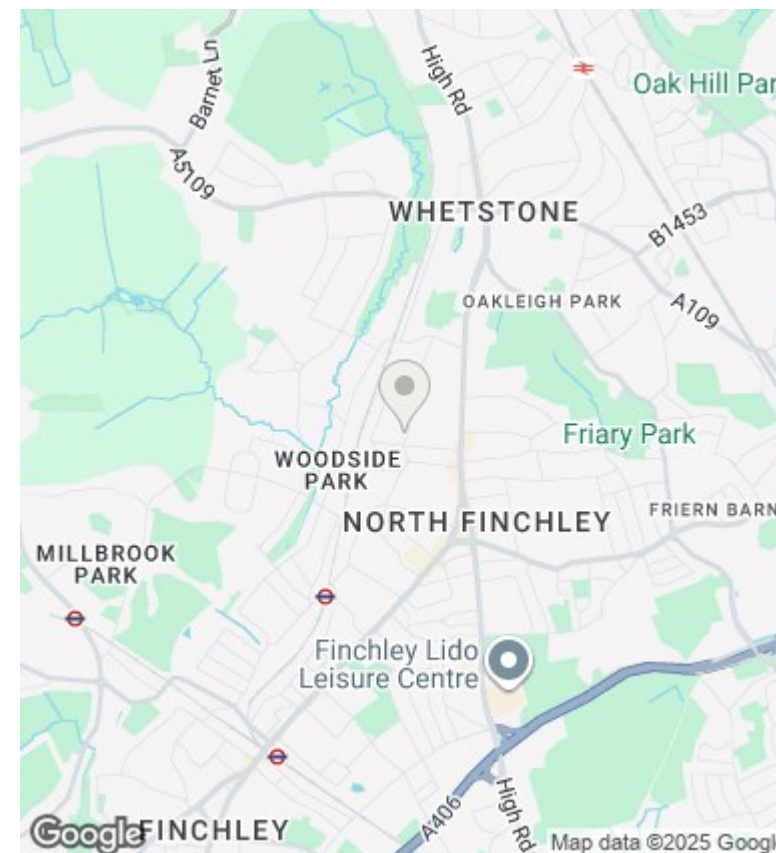
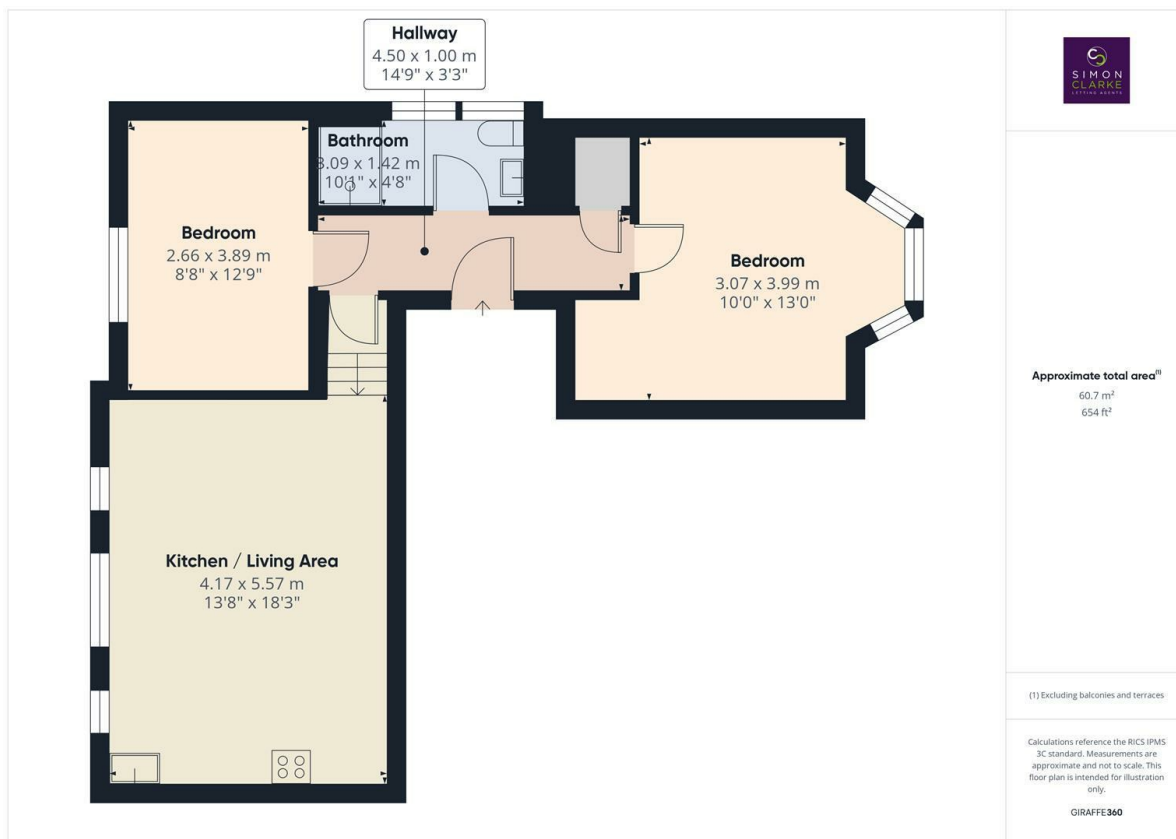




Woodside Avenue, London, N12 8AX

£2,150 Per Calendar Month

- Professionally managed by Simon Clarke Letting Agents
- Fitted kitchen with Bosch appliances and separate utility cupboard in the hallway
- Luxury fully tiled shower room
- Deposit: £2,480 (Equivalent to 5 weeks rent)
- 2 Double bedroom apartment situated in a charming period conversion in the heart of Woodside Park
- Wooden floors throughout
- Offered furnished or unfurnished
- New to the market and refurbished throughout
- Secure video entryphone
- Available NOW / Council tax to be confirmed



Directions

Viewings

Viewings by arrangement only. Call 02083499000 to make an appointment.

Council Tax Band

New Build

EPC Rating:

C

Energy Efficiency Rating		
	Current	Potential
Very energy efficient - lower running costs		
(92-plus) A		
(81-91) B		
(69-80) C	76	76
(55-68) D		
(39-54) E		
(21-38) F		
(1-20) G		
Not energy efficient - higher running costs		
England & Wales	EU Directive 2002/91/EC	