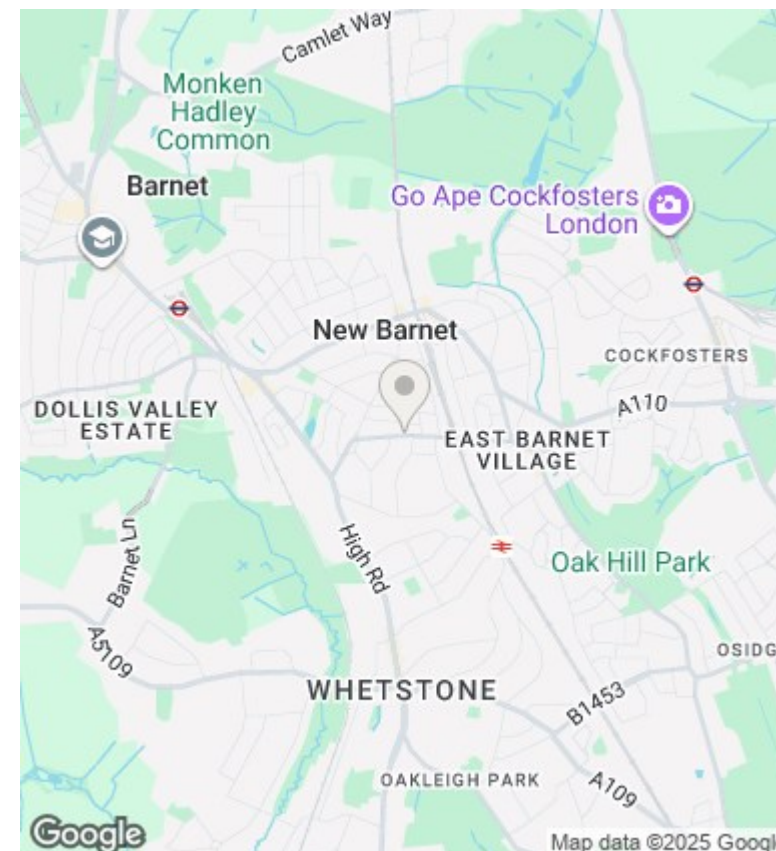
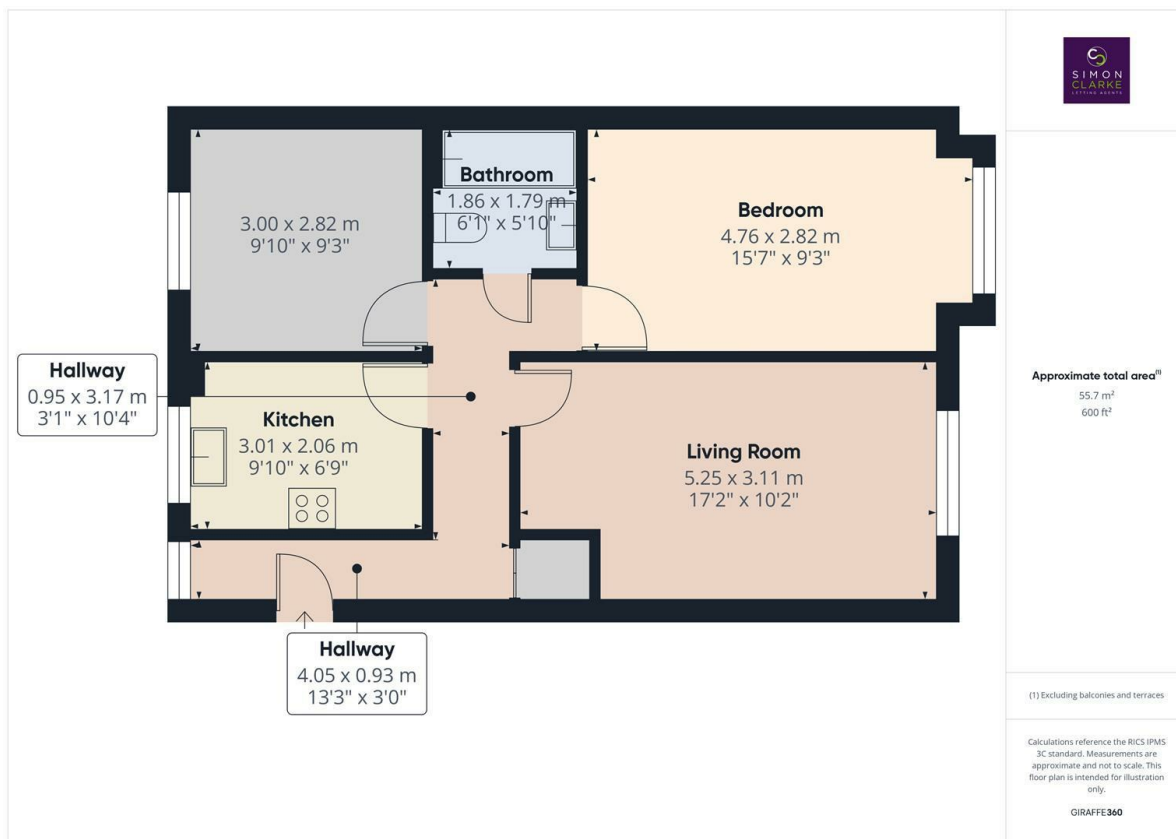




Lyonsdown Road, London, EN5 1SX

£1,700 PCM

- First floor two bedroom flat
- Fitted bathroom suite with shower over bath
- Available on long term tenancy (initial 12 months)
- Available from 15th November 2025
- Modern fitted kitchen with appliances
- Walking distance to New Barnet BR Station
- Council Tax band C - £1,809.34 per annum
- Allocated off street parking
- Electric heating / Video entry phone
- Unfurnished



Directions

7 Ballards Lane, Finchley, London, N3 1UX
02083499000

Viewings

Viewings by arrangement only. Call 02083499000 to make an appointment.

Council Tax Band

C

EPC Rating:

C

Energy Efficiency Rating		
	Current	Potential
Very energy efficient - lower running costs		
(92-plus) A		
(81-91) B		84
(69-80) C	76	
(55-68) D		
(39-54) E		
(21-38) F		
(1-20) G		
Not energy efficient - higher running costs		
England & Wales	EU Directive 2002/91/EC	

Hello@simonclarke.co.uk
www.simonclarke.co.uk