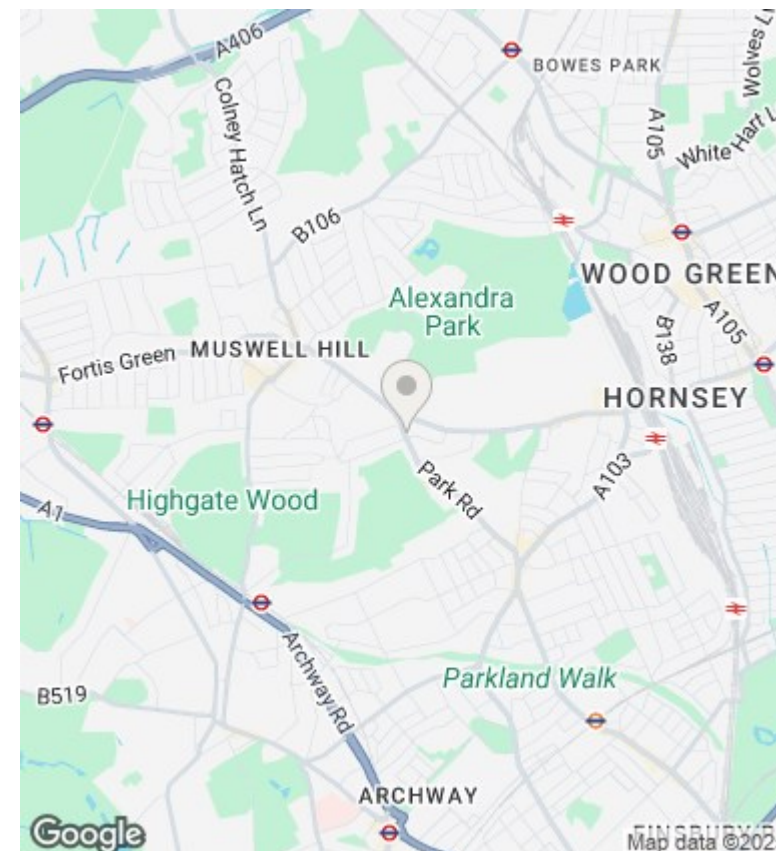
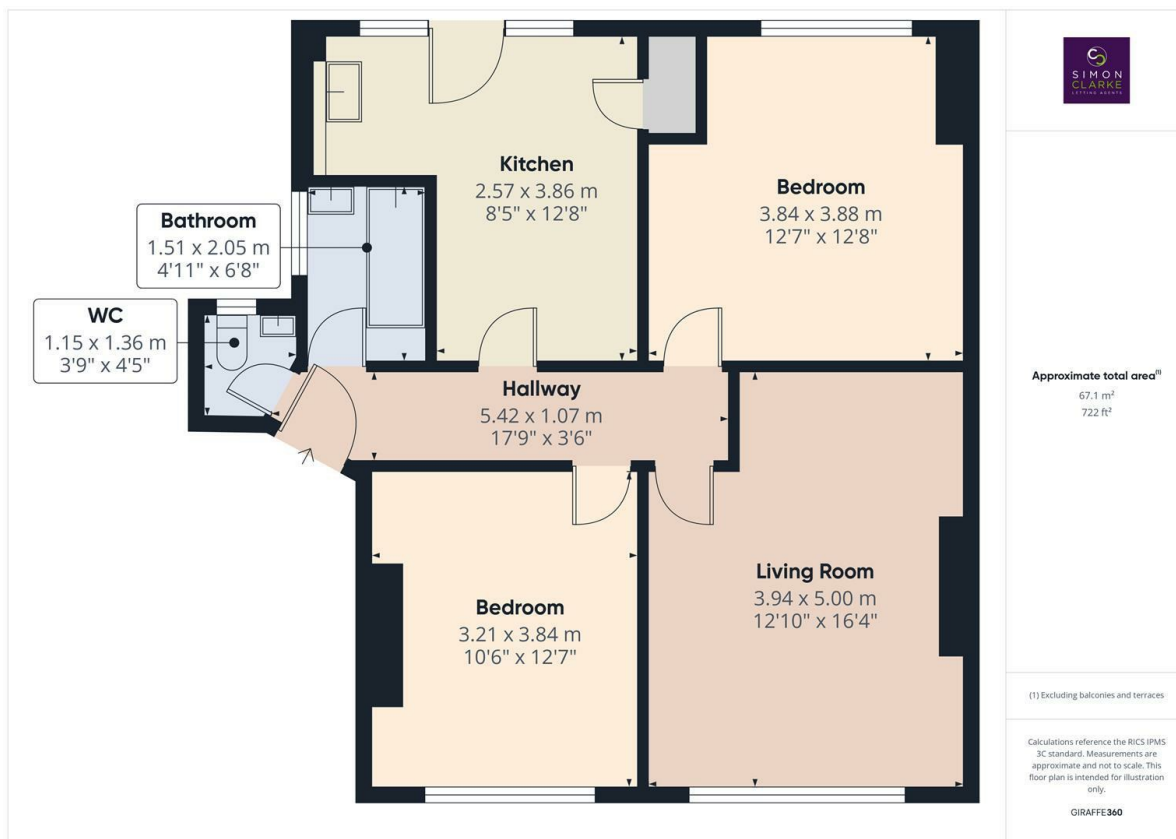




Park Road, London, N8 8LA

£1,900 PCM

- 2 Double bedroom apartment
- Fitted carpets throughout
- Available on long term tenancy (initial 12 months)
- Available from 28th August 2025
- Private roof terrace accessed via kitchen
- Fitted venetian blinds
- Council Tax band C
- Close to Priory Park
- Spacious kitchen with appliances
- Unfurnished



## Directions

## Viewings

Viewings by arrangement only. Call 02083499000 to make an appointment.

## Council Tax Band

C

## EPC Rating:

D

Energy Efficiency Rating		
	Current	Potential
Very energy efficient - lower running costs		
(92-plus) <b>A</b>		
(81-91) <b>B</b>		
(69-80) <b>C</b>		
(55-68) <b>D</b>	60	65
(39-54) <b>E</b>		
(21-38) <b>F</b>		
(1-20) <b>G</b>		
Not energy efficient - higher running costs		
<b>England &amp; Wales</b>	EU Directive 2002/91/EC	