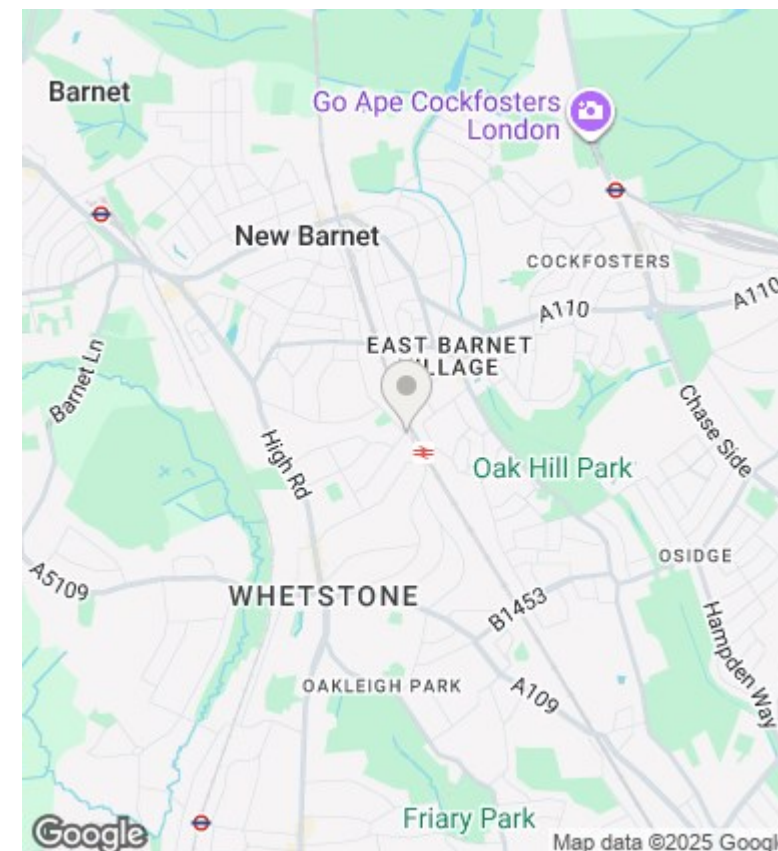
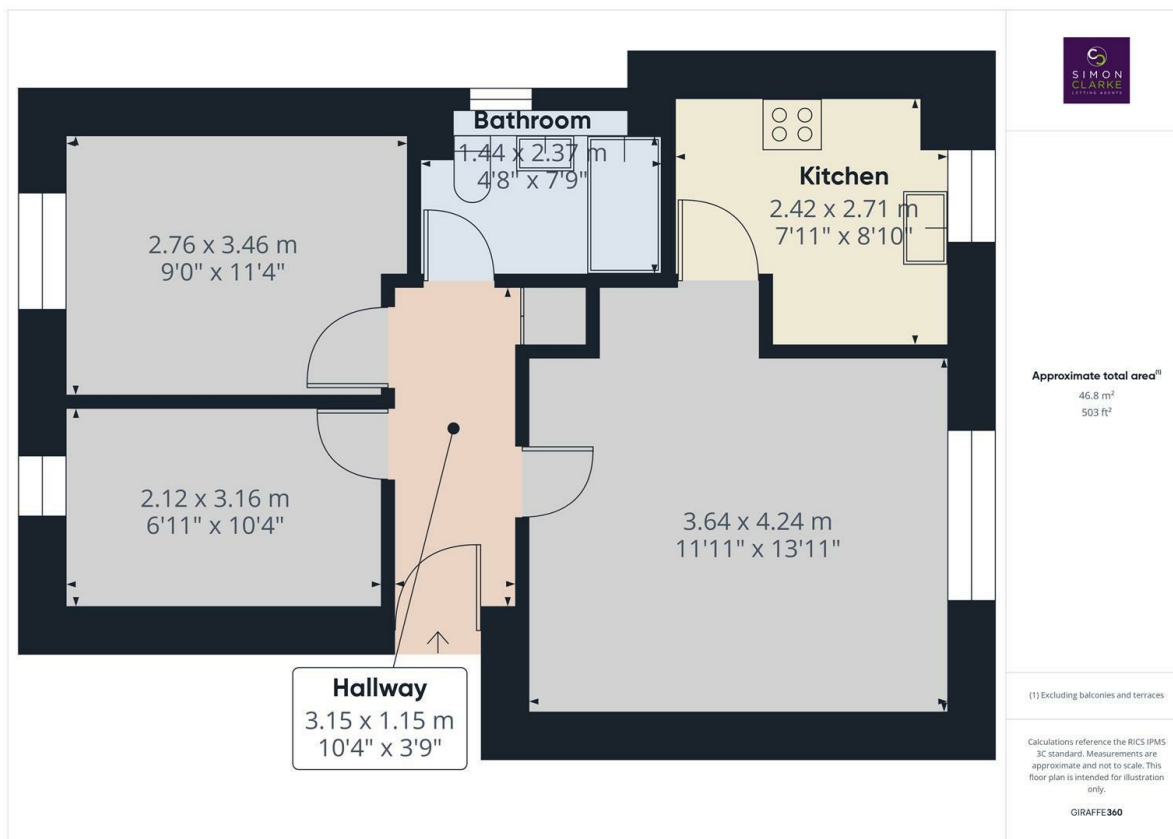




Stevenson Close, Hertfordshire, EN5 1DR

£1,500 PCM

- Ground floor 2 bedroom apartment
- 0.1 Miles to Oakleigh Park BR Station
- Available on long term tenancy (initial 12 months)
- Available now
- Newly redecorated throughout
- Fitted kitchen with appliances
- Unfurnished
- Off street parking
- Electric heating
- Council tax band C - £1,809.34pa



Directions

Viewings

Viewings by arrangement only. Call 02083499000 to make an appointment.

Council Tax Band

C

EPC Rating:

D

Energy Efficiency Rating		
	Current	Potential
Very energy efficient - lower running costs		
(92 plus) A		
(81-91) B		
(69-80) C		77
(55-68) D	60	
(39-54) E		
(21-38) F		
(1-20) G		
Not energy efficient - higher running costs		
England & Wales	EU Directive 2002/91/EC	