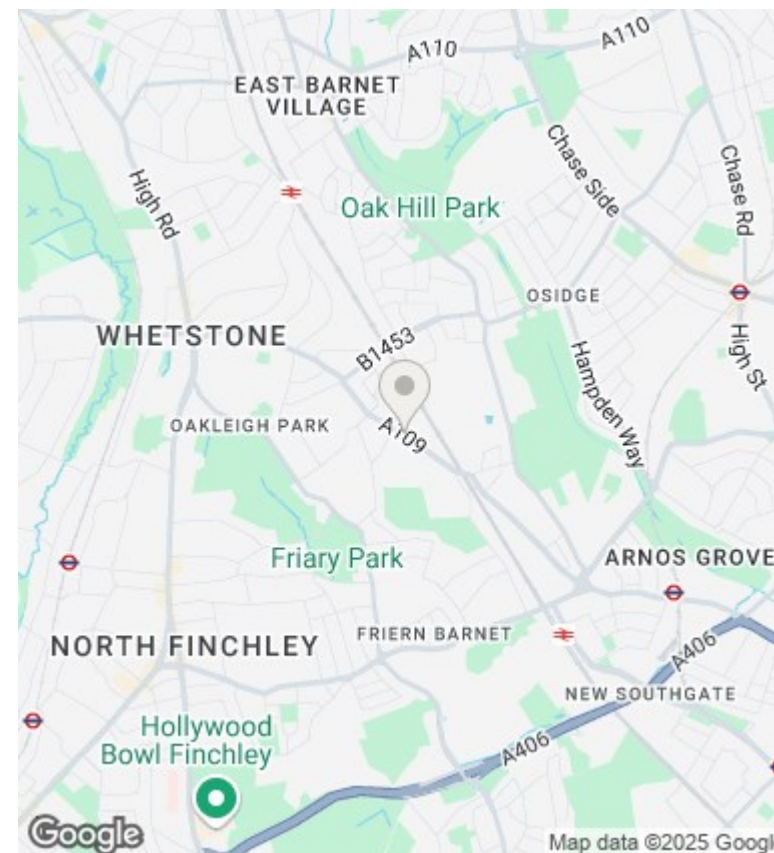
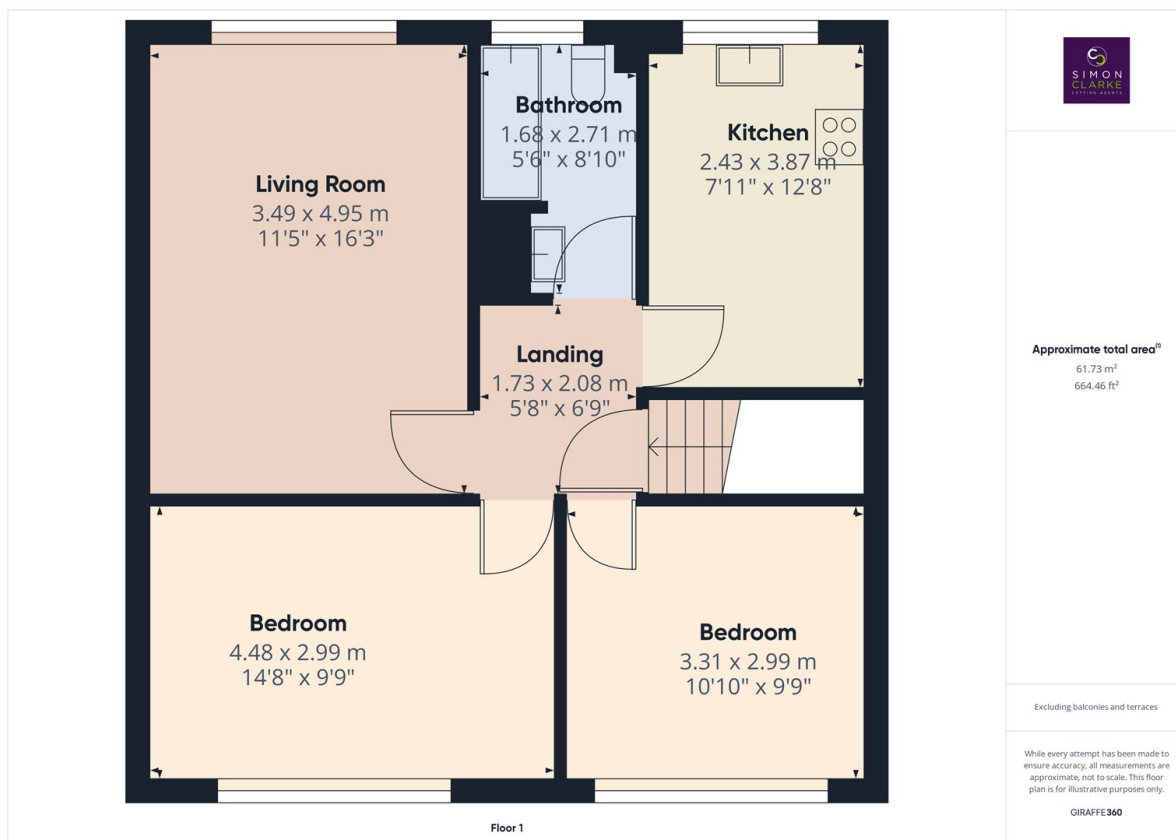




Oakleigh Road North, London, N20 0RH

£1,650 PCM

- First floor maisonette with own front door
- Fitted kitchen with appliances including dishwasher
- Bus stop opposite property on the No. 34 & 251 Bus route
- Available from 6th June 2025
- 2 Double bedrooms
- Spacious lounge with original wooden parquet flooring
- Unfurnished
- Tiled bathroom with electric shower
- Easy access to Northern & Piccadilly lines
- Council tax band D - £2,035.52pa



## Directions

## Viewings

Viewings by arrangement only. Call 02083499000 to make an appointment.

## Council Tax Band

D

## EPC Rating:

D

Energy Efficiency Rating		
	Current	Potential
Very energy efficient - lower running costs		
(92-plus) <b>A</b>		
(81-91) <b>B</b>		
(69-80) <b>C</b>		
(55-68) <b>D</b>	60	63
(39-54) <b>E</b>		
(21-38) <b>F</b>		
(1-20) <b>G</b>		
Not energy efficient - higher running costs		
England & Wales		EU Directive 2002/91/EC