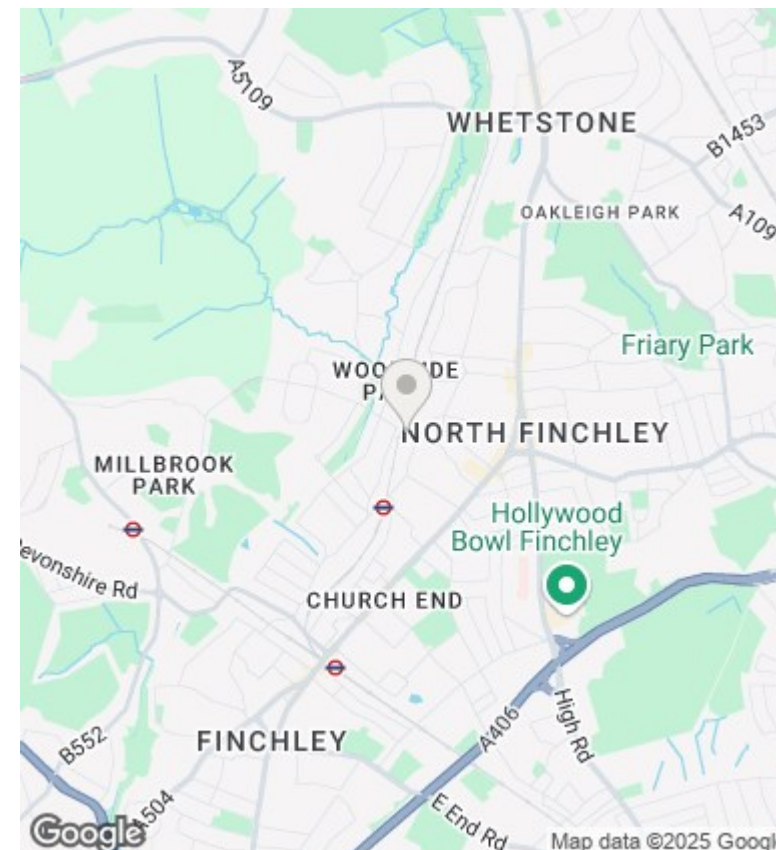
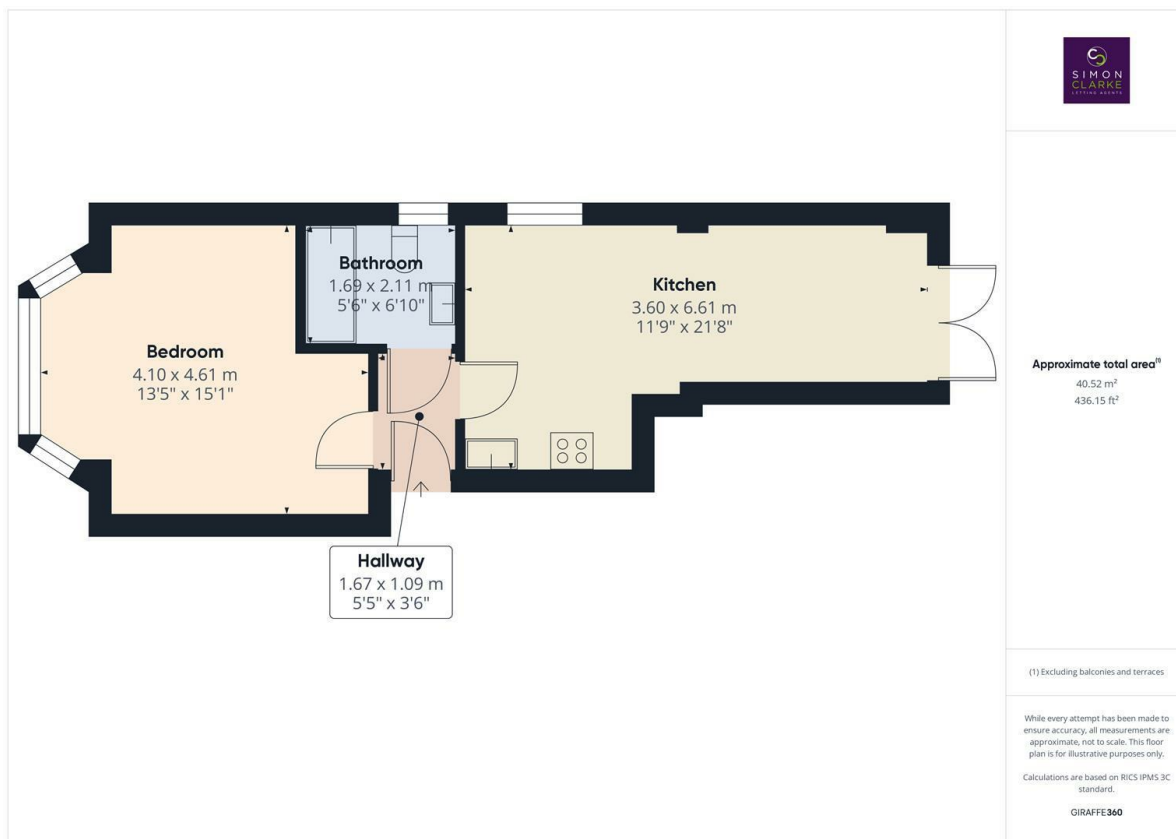




Argyle Road, London, N12 8JA

£1,525 PCM

- 1 Bedroom ground floor apartment
- Open plan kitchen with the lounge
- Available for long term tenancy (initial 12 months)
- Available from 5th June 2025
- Own section of rear garden
- Luxury bathroom/WC
- Council tax band C - £1,809.34pa
- Convenient for West Finchley & Woodside Park tube stations
- Laminate wooden floors throughout
- Unfurnished



Directions

Viewings

Viewings by arrangement only. Call 02083499000 to make an appointment.

Council Tax Band

C

EPC Rating:

D

Energy Efficiency Rating		
	Current	Potential
Very energy efficient - lower running costs		
(92-plus) A		
(81-91) B		75
(69-80) C		
(55-68) D	57	
(39-54) E		
(21-38) F		
(1-20) G		
Not energy efficient - higher running costs		
England & Wales		EU Directive 2002/91/EC