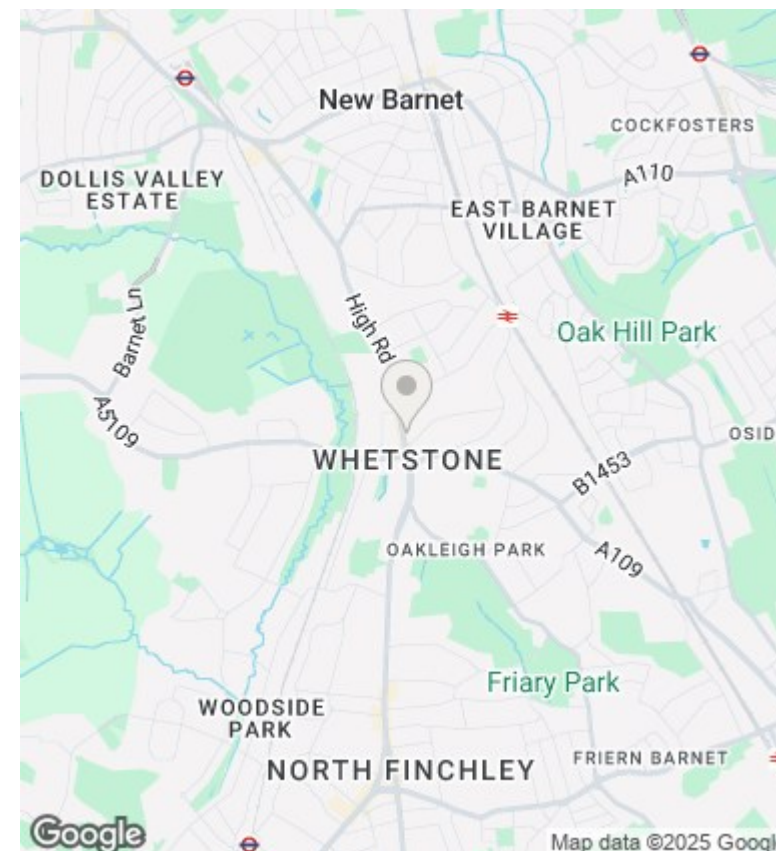
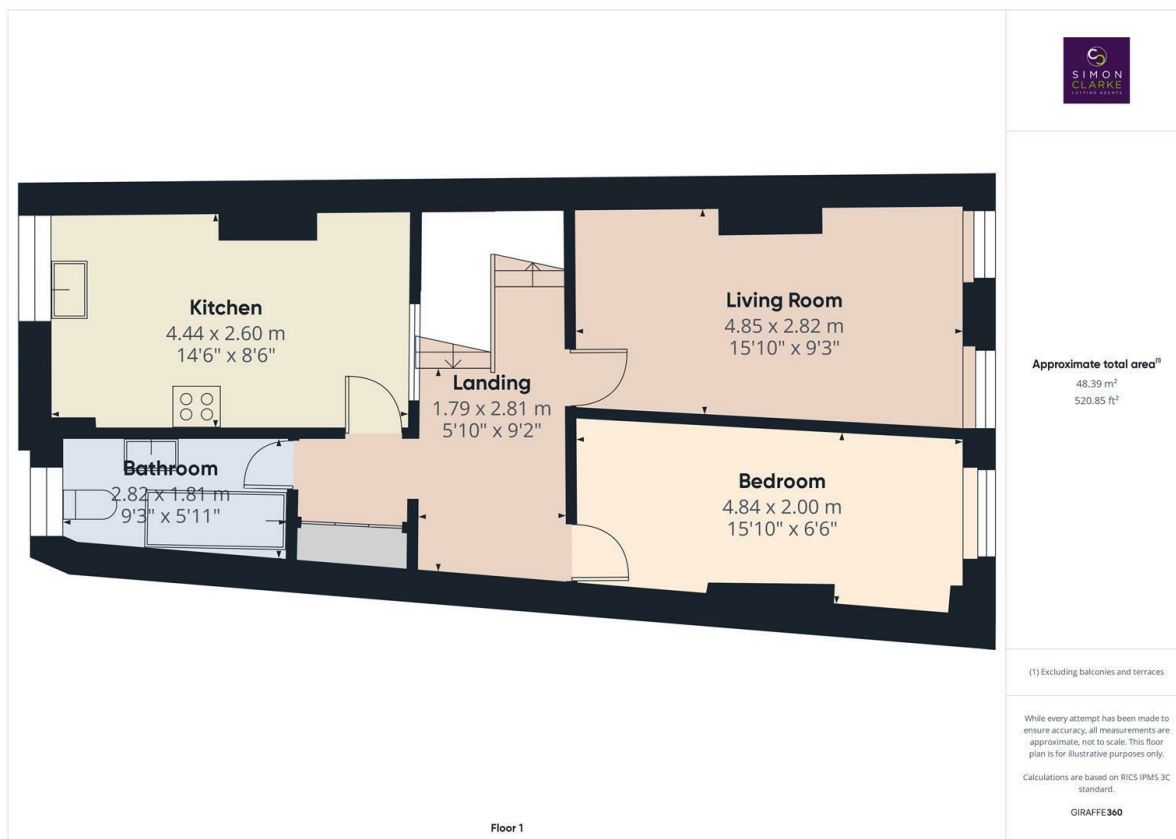




High Road, London, N20 9HJ

£1,750 PCM

- 2 Bedroom flat PLUS study above commercial premises
- Stylish bathroom suite
- Available on long term tenancy (initial 12 months)
- Available from 6th May 2025
- Walk-in wardrobe to master bedroom
- Fitted kitchen with appliances including dishwasher
- Council tax band D - £2,035.52 per annum
- Fitted carpets throughout
- Gas central heating / Double glazed
- Unfurnished



Directions

Viewings

Viewings by arrangement only. Call 02083499000 to make an appointment.

Council Tax Band

D

EPC Rating:

D

Energy Efficiency Rating		
	Current	Potential
Very energy efficient - lower running costs		
(92 plus) A		
(81-91) B		77
(69-80) C		
(55-68) D	57	
(39-54) E		
(21-38) F		
(1-20) G		
Not energy efficient - higher running costs		
England & Wales	EU Directive 2002/91/EC	