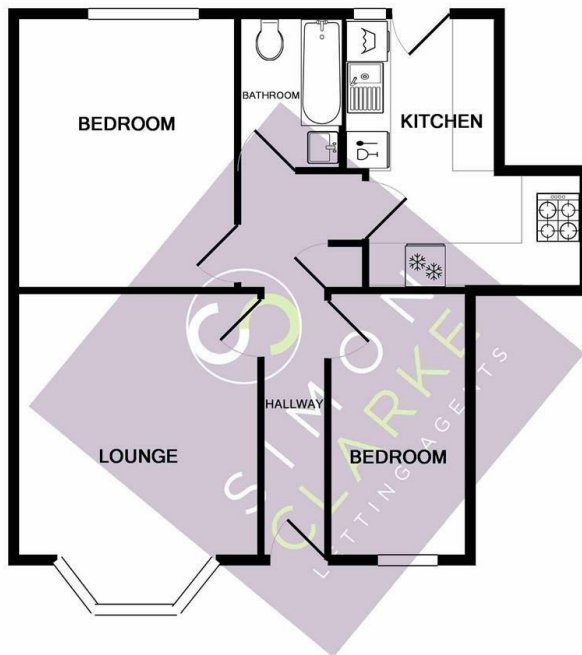


Oakleigh Road North, London, N20 0RH

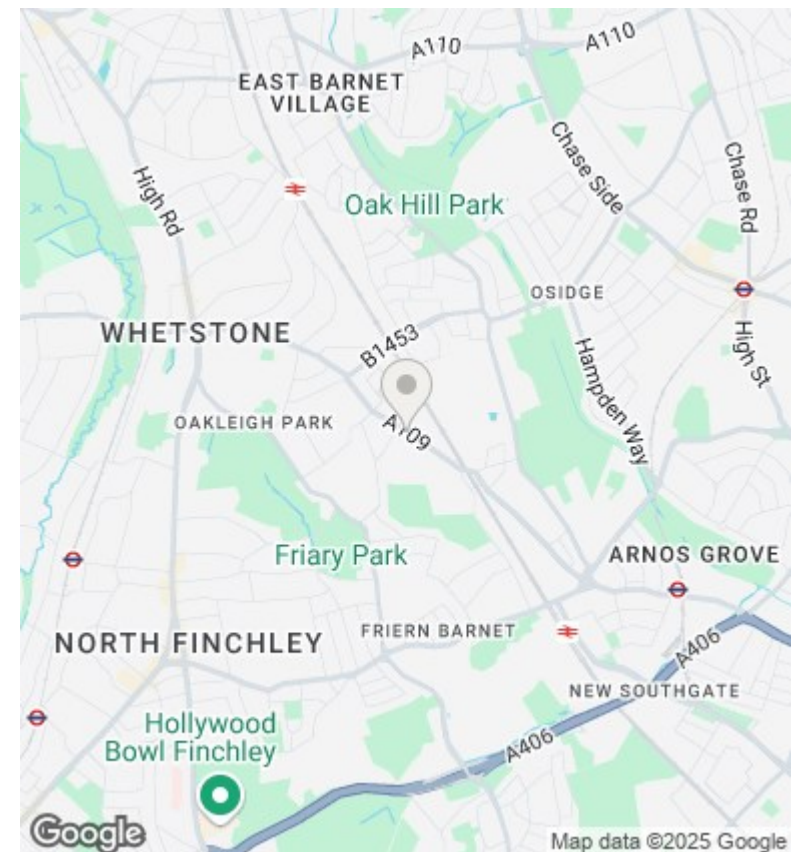
£1,650 PCM

- Managed by Simon Clarke Letting Agents
- Modern fitted kitchen with integrated appliances including dishwasher
- Available on long term tenancy (initial 12 months)
- Available from 6th June 2025
- Ground floor two bedroom maisonette
- Laminate wooden floors in hall and lounge and fitted carpets in both bedrooms
- Council tax band C
- Own share of rear garden
- stylish tiled bathroom suite
- Unfurnished



TOTAL APPROX. FLOOR AREA 603 SQ.FT. (56.0 SQ.M.)

Whilst every attempt has been made to ensure the accuracy of the floor plan contained here, measurements of doors, windows, rooms and any other items are approximate and no responsibility is taken for any error, omission or mis-statement. This plan is for illustrative purposes only and should be used as such by any prospective tenant. The services, systems and appliances shown have not been tested and no guarantee as to their operability or efficiency can be given. Simon Clarke Letting Agents.
Made with Metropix ©2017



Directions

Viewings

Viewings by arrangement only. Call 02083499000 to make an appointment.

Council Tax Band

C

EPC Rating:

D

Energy Efficiency Rating		
	Current	Potential
Very energy efficient - lower running costs		
(92 plus) A		
(81-91) B		
(69-80) C		
(55-68) D	68	77
(39-54) E		
(21-38) F		
(1-20) G		
Not energy efficient - higher running costs		
England & Wales	EU Directive 2002/91/EC	