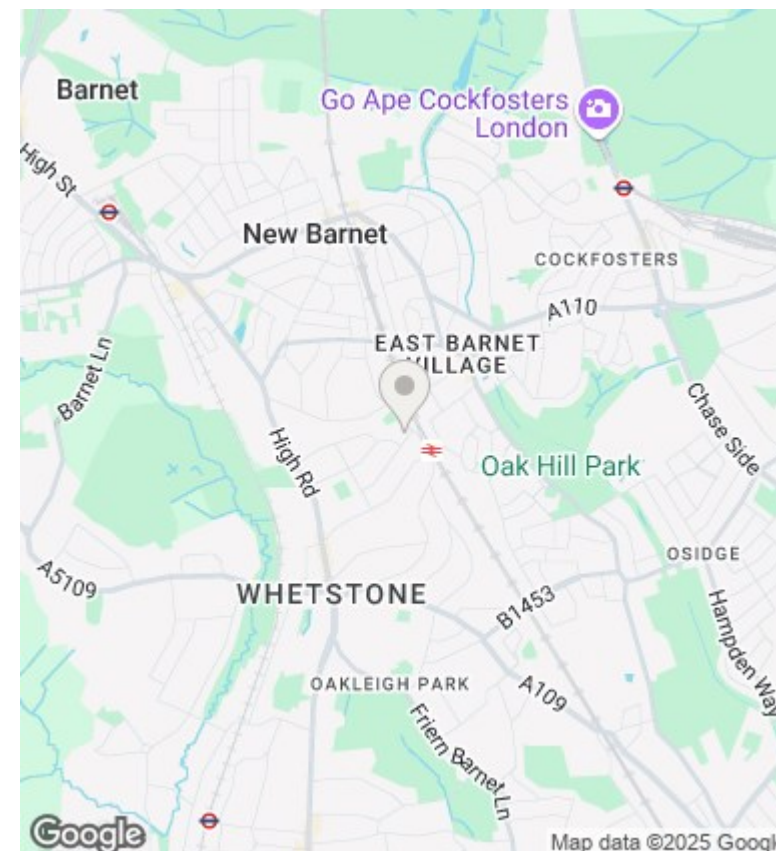
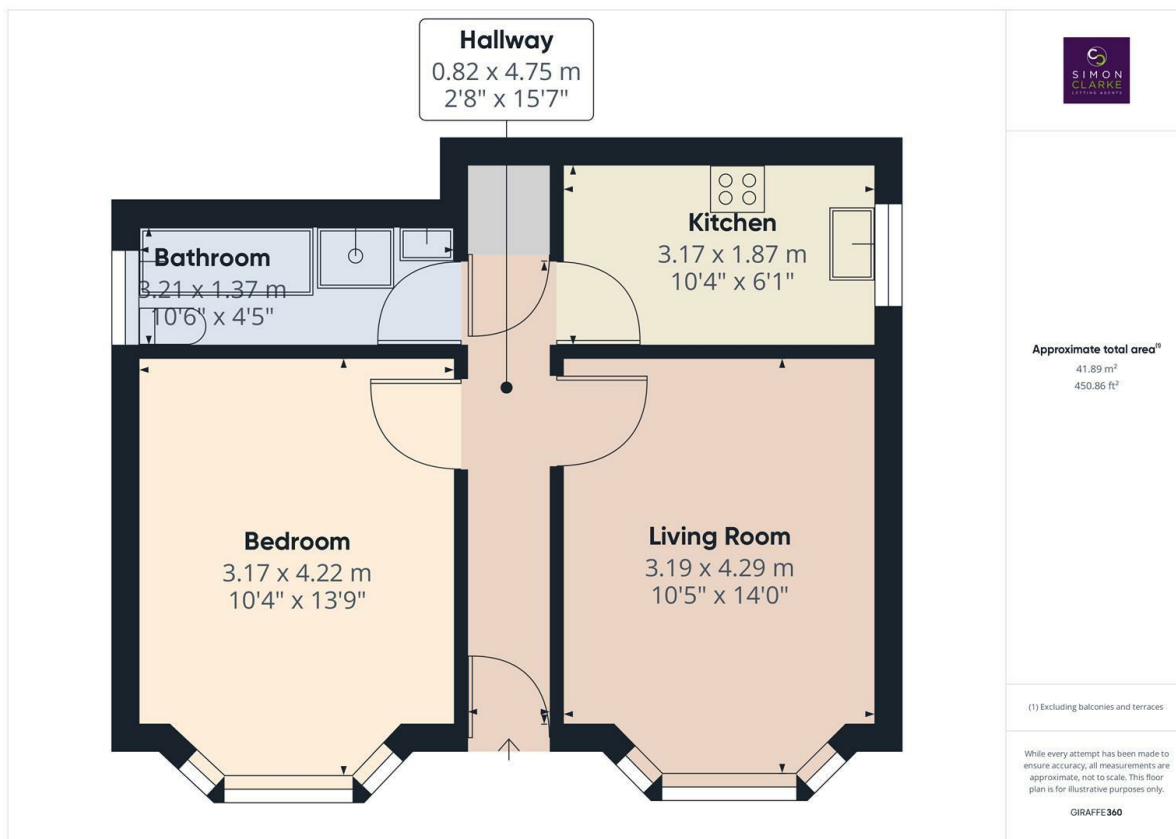




Temple Avenue, London, N20 9EL

£1,400 PCM

- MANAGED BY SIMON CLARKE LETTING AGENTS
- Double glazed & central heated
- Available on a long term tenancy (6 to 12 months)
- Available Now
- NEWLY REDECORATED THROUGHOUT
- Semi tiled 4 piece bathroom suite
- Council Tax band C - £1,809.34 per annum
- Laminate flooring throughout
- Located a short walk from Oakleigh Park BR Station
- Unfurnished



## Directions

## Viewings

Viewings by arrangement only. Call 02083499000 to make an appointment.

## Council Tax Band

C

## EPC Rating:

D

Energy Efficiency Rating		
	Current	Potential
Very energy efficient - lower running costs		
(92 plus) A		
(81-91) B		
(69-80) C		
(55-68) D	68	77
(39-54) E		
(21-38) F		
(1-20) G		
Not energy efficient - higher running costs		
England & Wales	EU Directive 2002/91/EC	