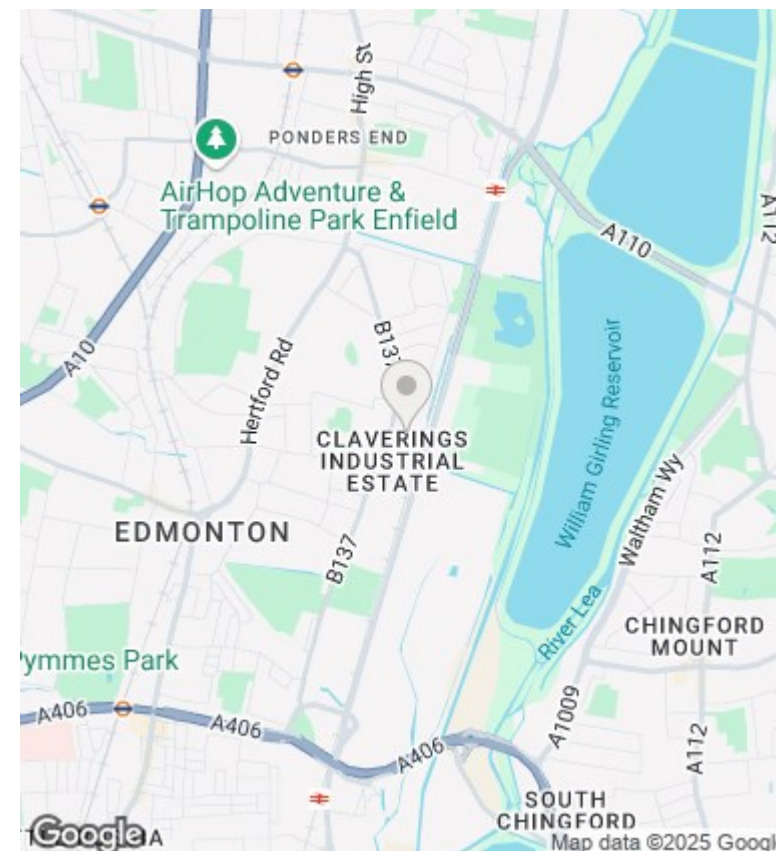
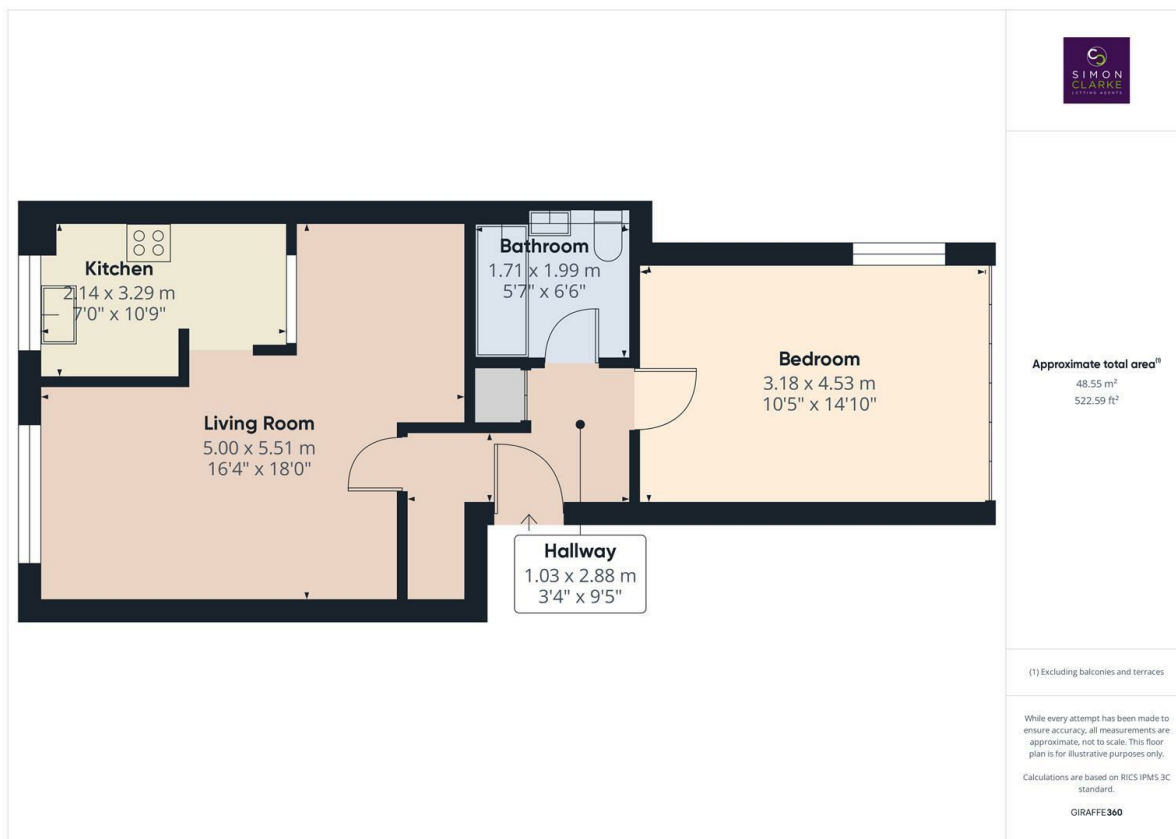




Martin Close, London, N9 8UE

£1,300 PCM

- Managed by Simon Clarke Letting Agents
- Fitted wardrobes in bedroom
- Available on long term tenancy (initial 12 months)
- Available NOW
- Ground floor 1 bedroom apartment
- Freshly redecorated throughout
- Unfurnished
- Off street parking
- Laminate wood flooring throughout
- Council tax band B



Directions

Viewings

Viewings by arrangement only. Call 02083499000 to make an appointment.

Council Tax Band

B

EPC Rating:

D

