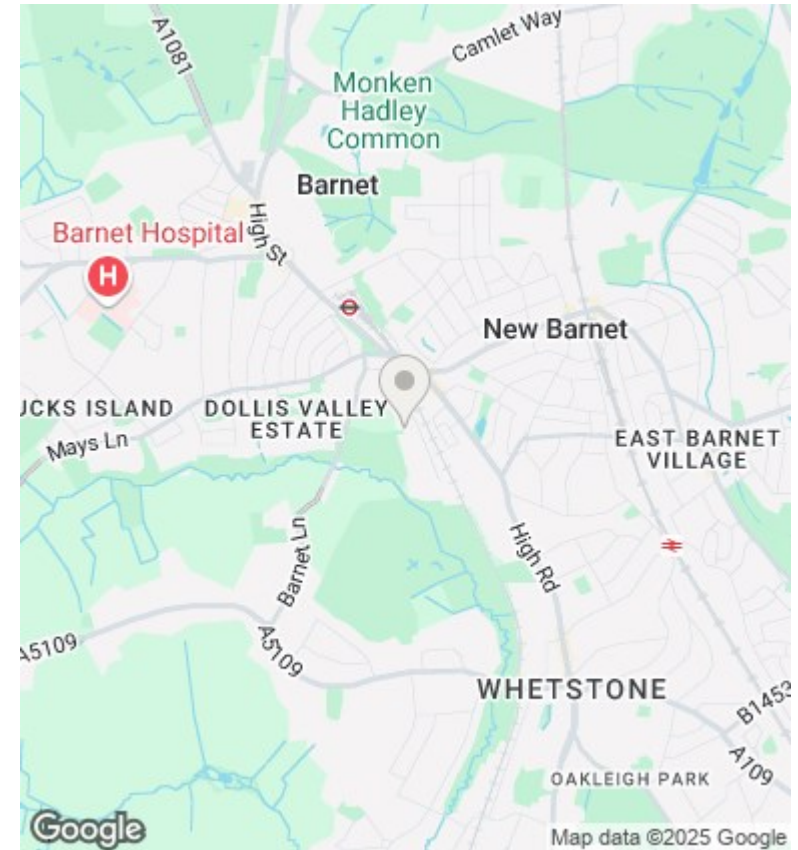
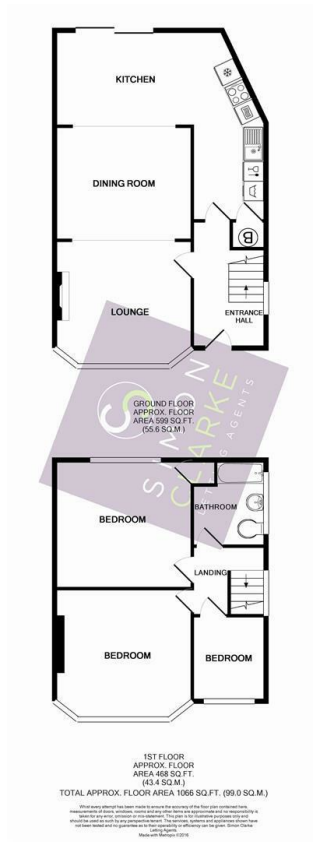




Grasvenor Avenue, Hertfordshire, EN5 2DB

£2,350 PCM

- Managed by Simon Clarke Letting Agents
- Huge through lounge
- Close to High Barnet Tube Station
- Available from 12th June 2025
- 3 Bedroom end of terrace house
- Open plan kitchen dining room with access to garden
- Modern fitted bathroom
- Located opposite King George V Playing Fields providing attractive views
- Private garden with patio
- Unfurnished / Council tax band E



Directions

Viewings

Viewings by arrangement only. Call 02083499000 to make an appointment.

Council Tax Band

E

EPC Rating:

D

Energy Efficiency Rating		Current	Potential
<i>Very energy efficient - lower running costs</i>			
(92 plus) A			85
(81-91) B			
(69-80) C			
(55-68) D		56	
(39-54) E			
(21-38) F			
(1-20) G			
<i>Not energy efficient - higher running costs</i>			
England & Wales		EU Directive 2002/91/EC	