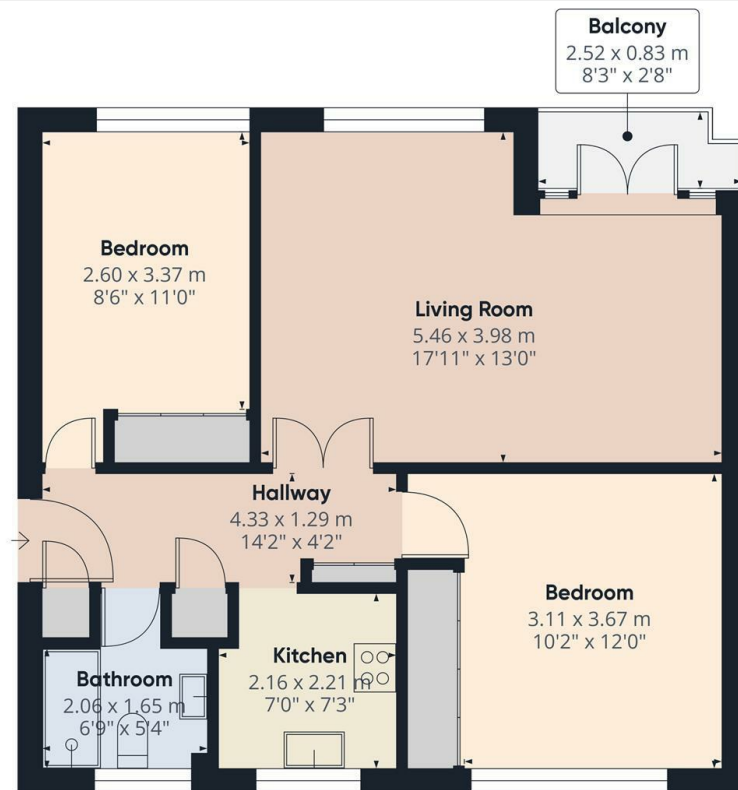




## Franklin Close, Whetstone, N20 9QT

£1,695 PCM

- Stunning 2 bedroom apartment
- Ample storage offered throughout
- Superb location for amenities, open spaces and transport links
- Available from 28th May 2025
- Balcony over looking attractive well kept communal gardens
- Fitted carpets throughout
- Available on long term tenancy (initial 12 months)
- Fitted wardrobes in both bedrooms
- Luxury walk in shower
- Unfurnished / Council tax band D



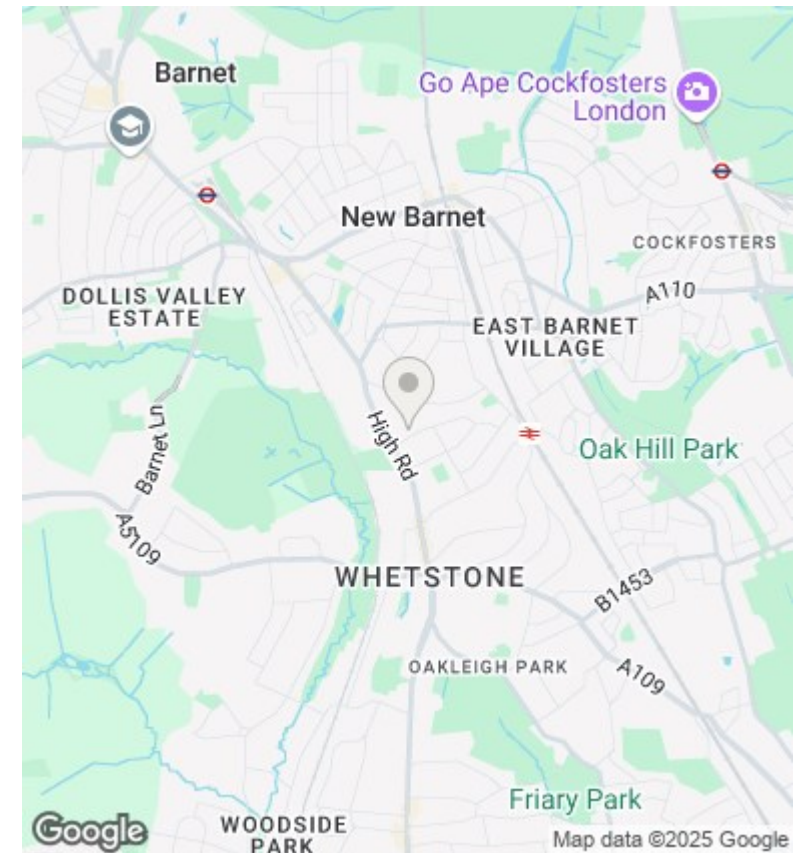
Approximate total area<sup>(1)</sup>  
58.13 m<sup>2</sup>  
625.73 ft<sup>2</sup>

Balconies and terraces  
1.99 m<sup>2</sup>  
21.42 ft<sup>2</sup>

(1) Excluding balconies and terraces

While every attempt has been made to ensure accuracy, all measurements are approximate, not to scale. This floor plan is for illustrative purposes only. Calculations are based on RICS IPMS 3C standard.

GIRAFFE360



## Directions

## Viewings

Viewings by arrangement only. Call 02083499000 to make an appointment.

## Council Tax Band

D

## EPC Rating:

C

Energy Efficiency Rating		
	Current	Potential
Very energy efficient - lower running costs		
(92 plus) <b>A</b>		
(81-91) <b>B</b>		
(69-80) <b>C</b>	71	79
(55-68) <b>D</b>		
(39-54) <b>E</b>		
(21-38) <b>F</b>		
(1-20) <b>G</b>		
Not energy efficient - higher running costs		
<b>England &amp; Wales</b>	EU Directive 2002/91/EC	