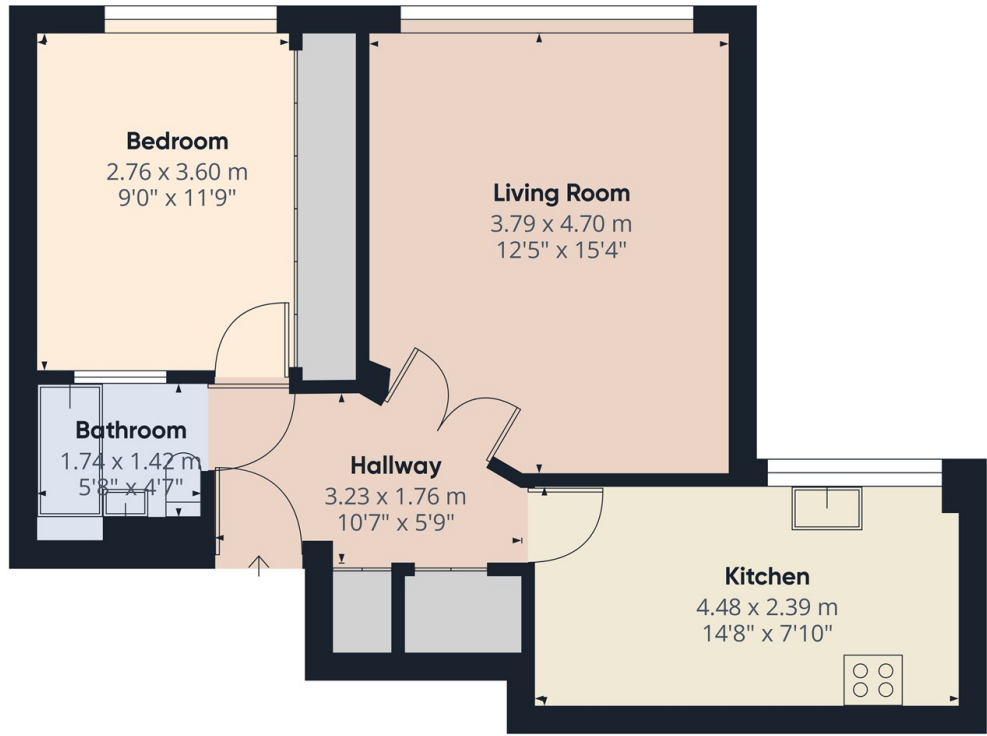




Hendon Lane, London, N3 1SQ

£1,650 PCM

- A Luxury top floor (2nd) 1 Bedroom apartment
- Ample storage space
- Available on long term tenancy (Initial 12 months)
- Available NOW
- Own secure garage
- Double bedroom with fitted wardrobes
- Unfurnished / part-furnished
- Fitted kitchen with appliances
- Secure off street parking available
- Council tax band D - £2,035.52pa

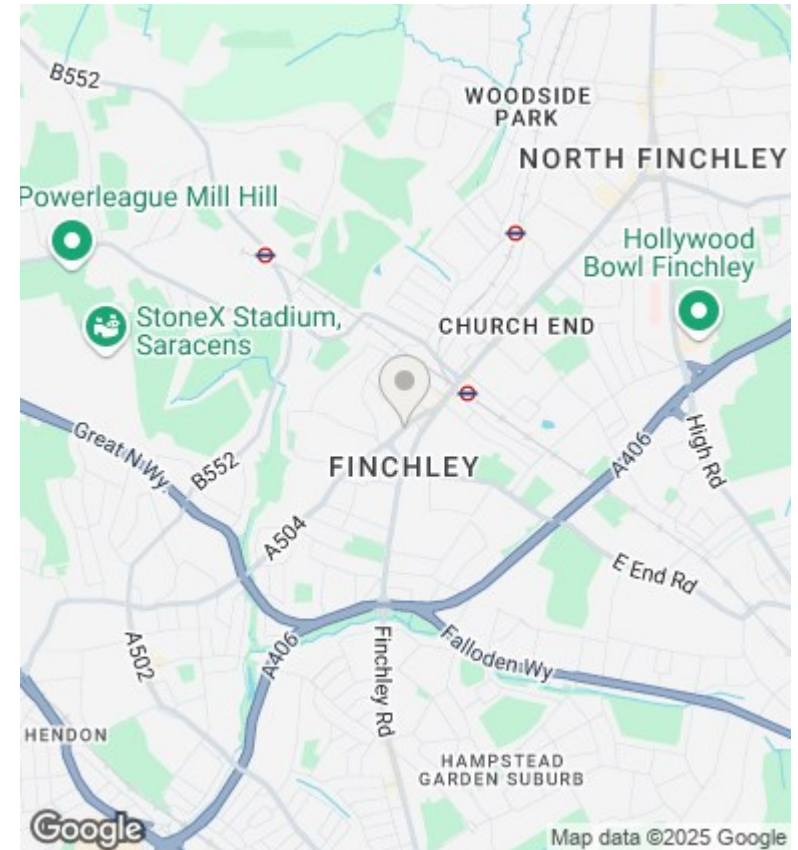


Approximate total area*
49.96 m²
537.76 ft²

(*) Excluding balconies and terraces

While every attempt has been made to ensure accuracy, all measurements are approximate, not to scale. This floor plan is for illustrative purposes only.

GIRAFFE360



Directions

Viewings

Viewings by arrangement only. Call 02083499000 to make an appointment.

Council Tax Band

D

EPC Rating:

D

Energy Efficiency Rating		
	Current	Potential
<i>Very energy efficient - lower running costs</i>		
(92 plus) A		
(81-91) B		76
(69-80) C		
(55-68) D	61	
(39-54) E		
(21-38) F		
(1-20) G		
<i>Not energy efficient - higher running costs</i>		
England & Wales	EU Directive 2002/91/EC	