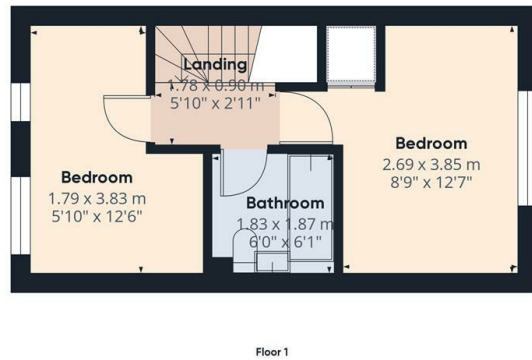
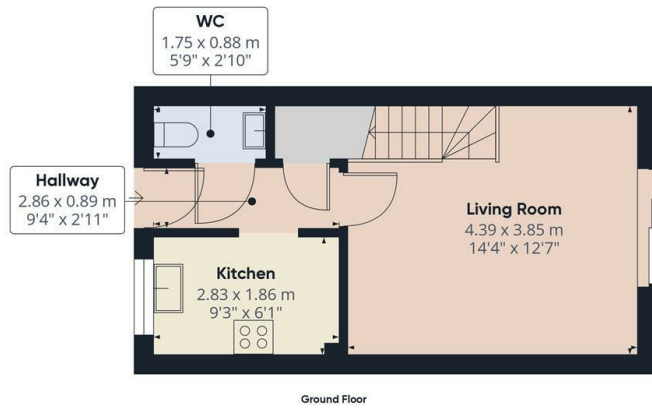




Buttercup Close, Hatfield, AL10 9FH

£1,600 PCM

- Managed by Simon Clarke Letting Agents
- Shed at rear of garden with electrical power supply
- Available on long term tenancy (initial 12 months)
- Available from 20th May 2025
- 2 Bedroom mid-terraced house
- Ample storage including a large boarded loft space
- Council tax band C
- Low maintenance rear garden
- Off street parking for 1 car
- Unfurnished

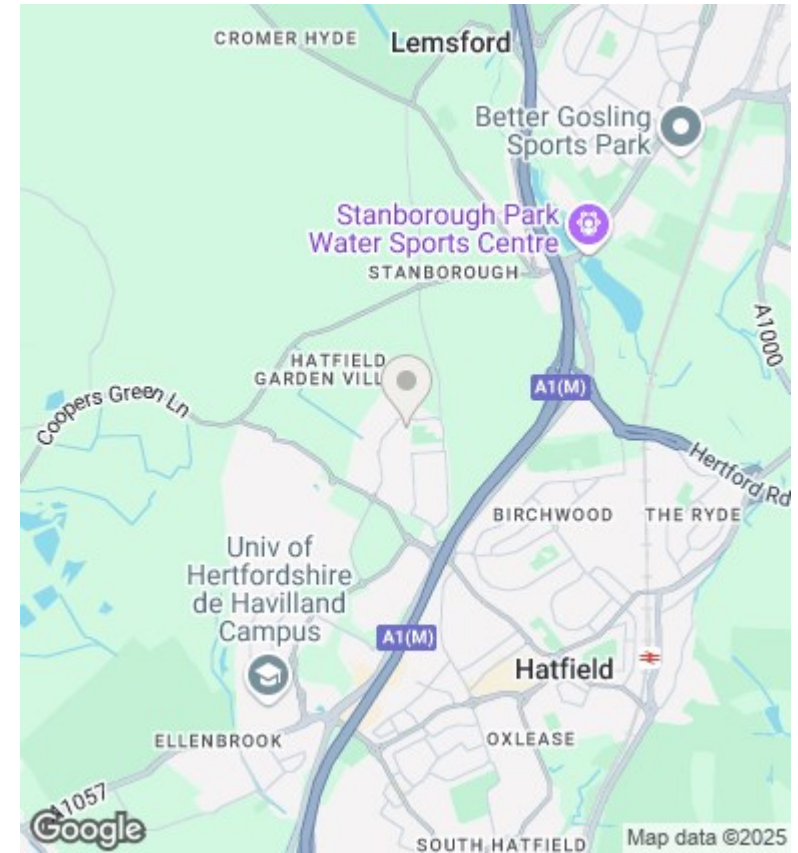


Approximate total area¹⁾
52.08 m²
560.59 ft²

(1) Excluding balconies and terraces

While every attempt has been made to ensure accuracy, all measurements are approximate, not to scale. This floor plan is for illustrative purposes only. Calculations are based on RICS IPMS 3C standard.

GIRAFFE360



Directions

Viewings

Viewings by arrangement only. Call 02083499000 to make an appointment.

Council Tax Band

C

EPC Rating:

C

Energy Efficiency Rating		
	Current	Potential
<i>Very energy efficient - lower running costs</i>		
(92 plus) A		
(81-91) B		
(69-80) C	75	81
(55-68) D		
(39-54) E		
(21-38) F		
(1-20) G		
<i>Not energy efficient - higher running costs</i>		
England & Wales	EU Directive 2002/91/EC	