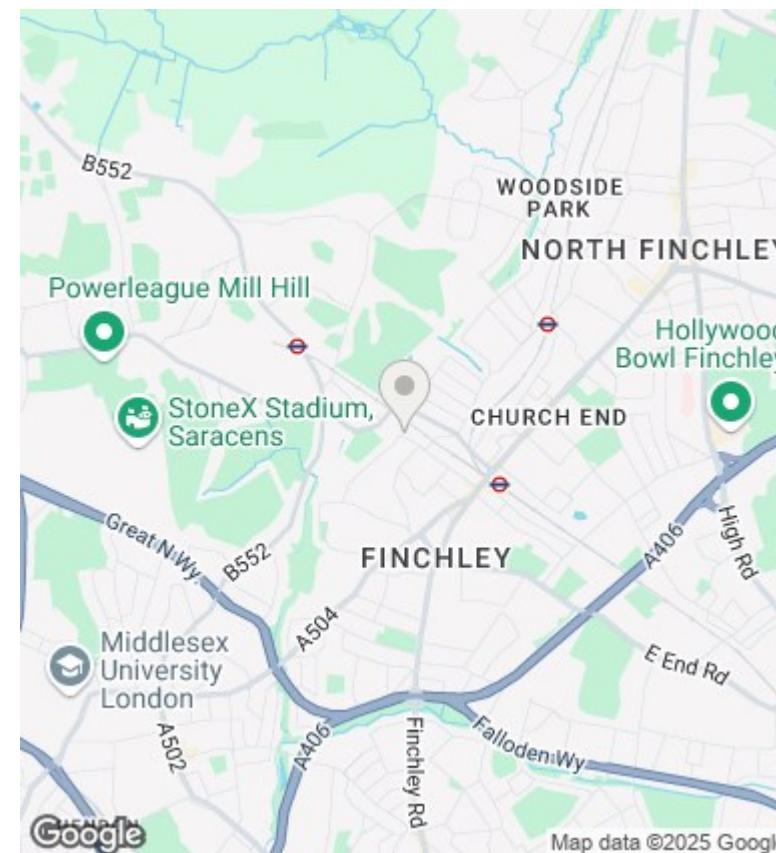
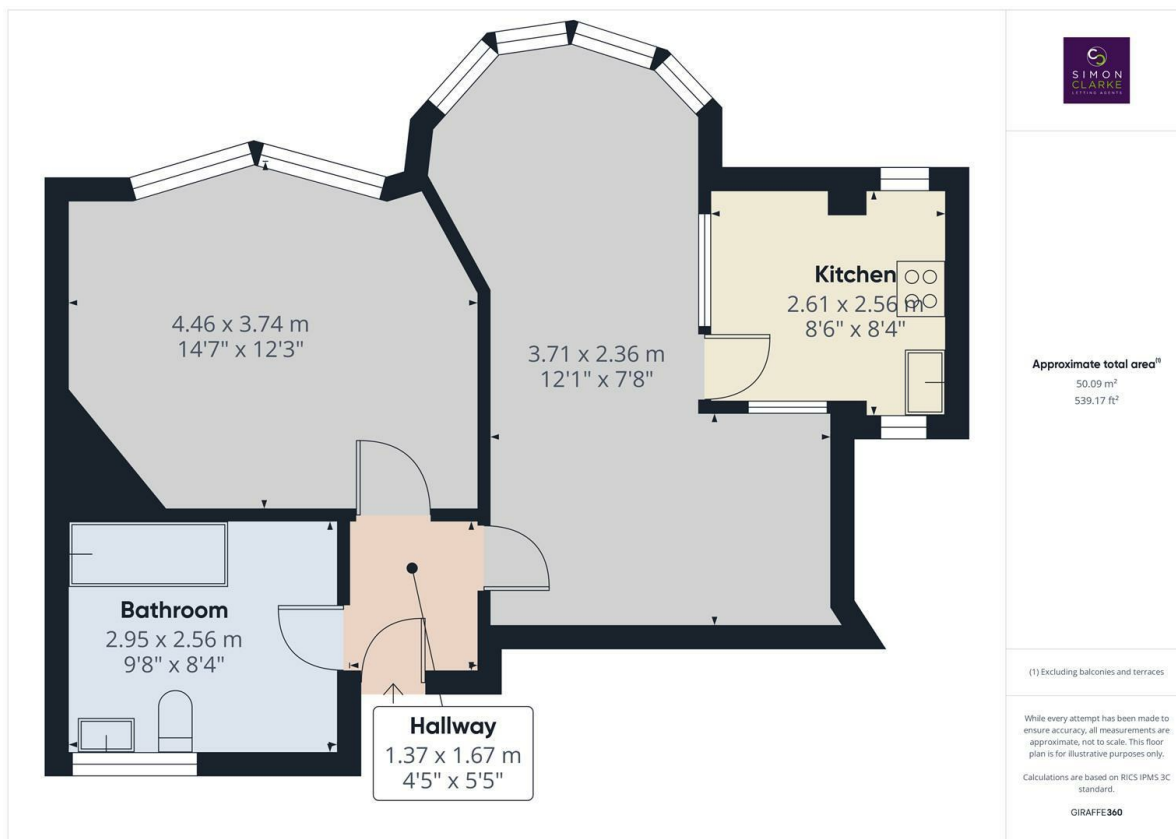




Dollis Park, London, N3 1BT

£1,450 PCM

- Managed by Simon Clarke Letting Agents
- Brand new fitted kitchen & bathroom
- Available on long term tenancy (initial 12 months)
- Available NOW
- A stunning 1 bedroom apartment
- Newly laid carpets
- Unfurnished
- Newly renovated throughout
- Situated in a highly sought after location within Finchley
- Council tax band C



Directions

Viewings

Viewings by arrangement only. Call 02083499000 to make an appointment.

Council Tax Band

C

EPC Rating:

C

Energy Efficiency Rating		
	Current	Potential
Very energy efficient - lower running costs		
(92 plus) A		
(81-91) B		
(69-80) C	72	81
(55-68) D		
(39-54) E		
(21-38) F		
(1-20) G		
Not energy efficient - higher running costs		
England & Wales	EU Directive 2002/91/EC	