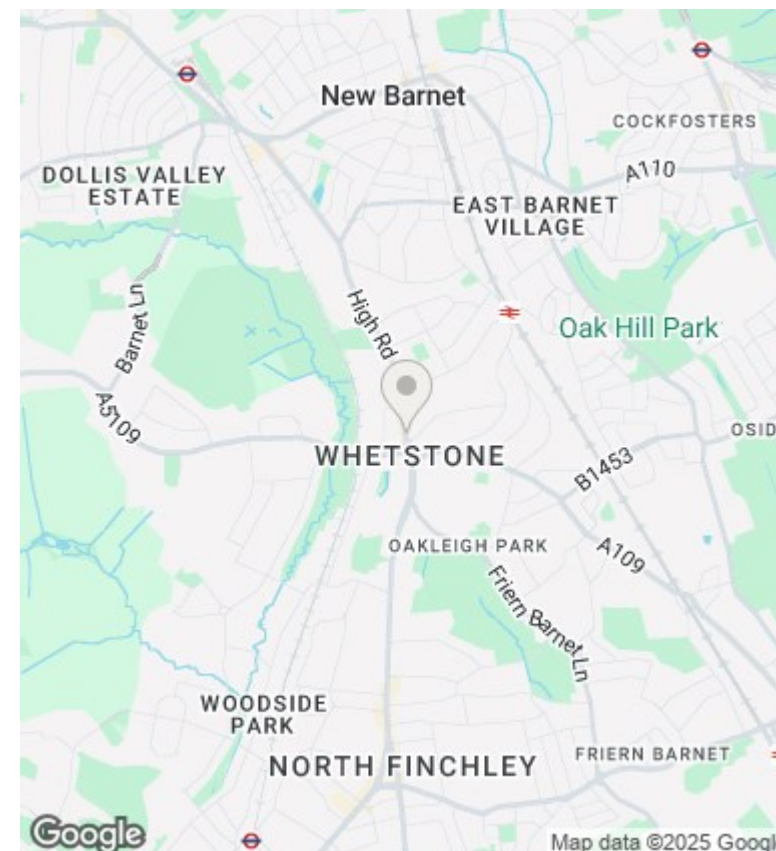
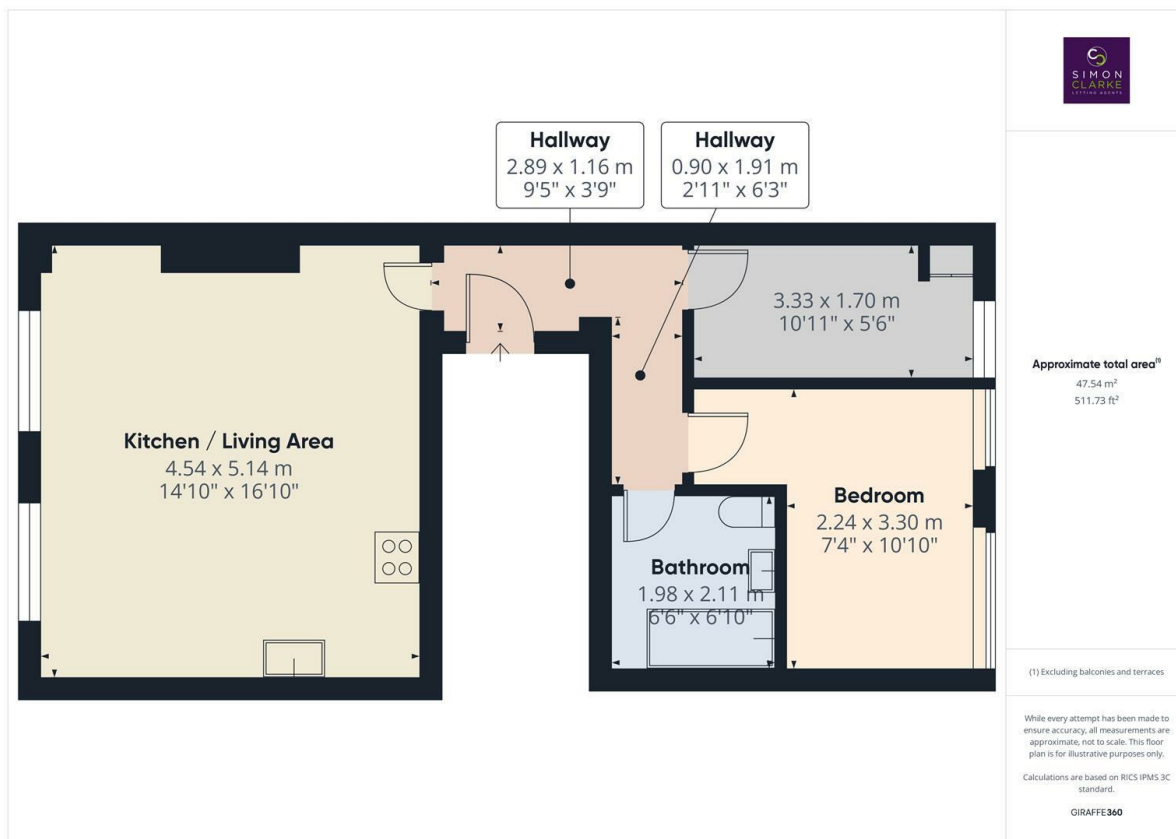




High Road, London, N20 9HJ

£1,550 PCM

- Managed by Simon Clarke Letting Agents
- Excellent location for amenities and transport links
- Available on long term tenancy (initial 12 months)
- Available from 23rd May 2025
- First floor 2 bedroom apartment
- BRAND NEW Laminate wooden floors to be fitted
- Council Tax band C - £1,727.32 per annum
- Open plan kitchen / lounge
- Modern bathroom suite with shower over bath
- Unfurnished



Directions

Viewings

Viewings by arrangement only. Call 02083499000 to make an appointment.

Council Tax Band

C

EPC Rating:

C

Energy Efficiency Rating		
	Current	Potential
Very energy efficient - lower running costs		
(92 plus) A		
(81-91) B		
(69-80) C	70	76
(55-68) D		
(39-54) E		
(21-38) F		
(1-20) G		
Not energy efficient - higher running costs		
England & Wales	EU Directive 2002/91/EC	