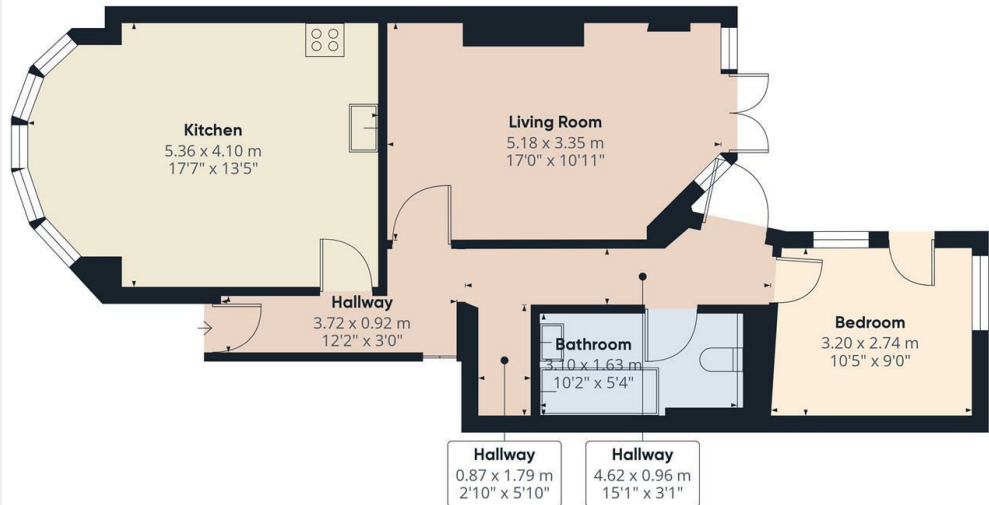




Cranley Gardens, London, N13 4LT

£1,900 PCM

- Versatile Ground Floor 2 Double bedroom apartment
- Pet cats welcome
- Available on long term tenancy (initial 12 months)
- Available 1st May 2025
- NEWLY REFURBISHED throughout 12 months ago
- Set within the prestigious Lakes Estate moments from vast array of shops and restaurants
- Council tax band D - £2,065.48 per annum
- Large private garden with patio
- Gas central heating / Double glazed
- Unfurnished

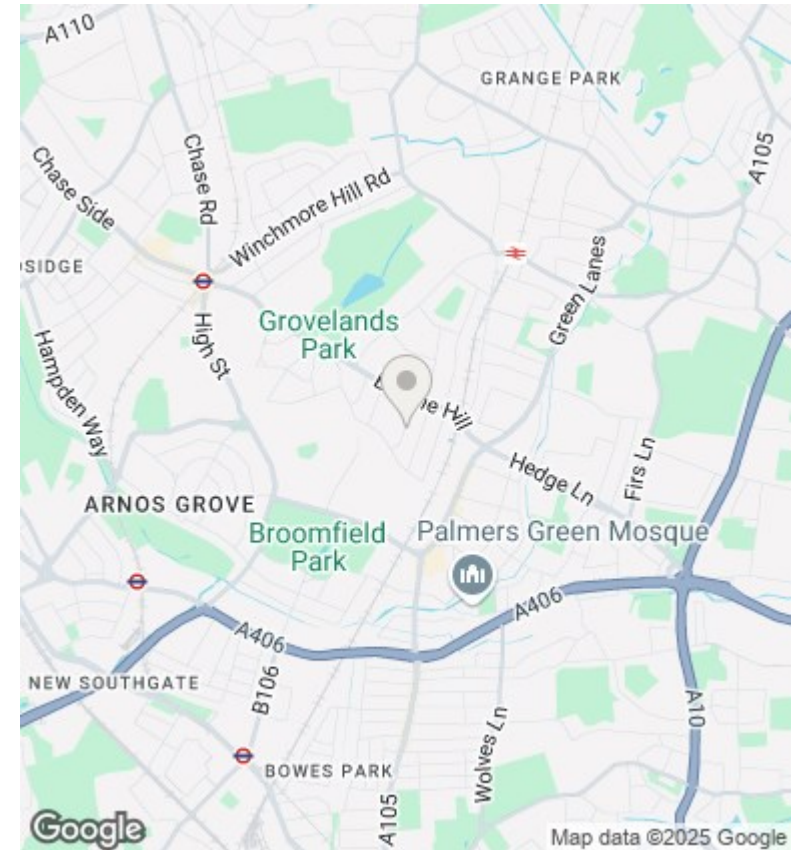


Approximate total area¹⁾
60.95 m²
656.06 ft²

(1) Excluding balconies and terraces

While every attempt has been made to ensure accuracy, all measurements are approximate, not to scale. This floor plan is for illustrative purposes only. Calculations are based on RICS IPMS 3C standard.

GIRAFFE360



Directions

Viewings

Viewings by arrangement only. Call 02083499000 to make an appointment.

Council Tax Band

D

EPC Rating:

C

Energy Efficiency Rating

	Current	Potential
<i>Very energy efficient - lower running costs</i>		
(92 plus) A		
(81-91) B		
(69-80) C	71	78
(55-68) D		
(39-54) E		
(21-38) F		
(1-20) G		
<i>Not energy efficient - higher running costs</i>		
England & Wales	EU Directive 2002/91/EC	