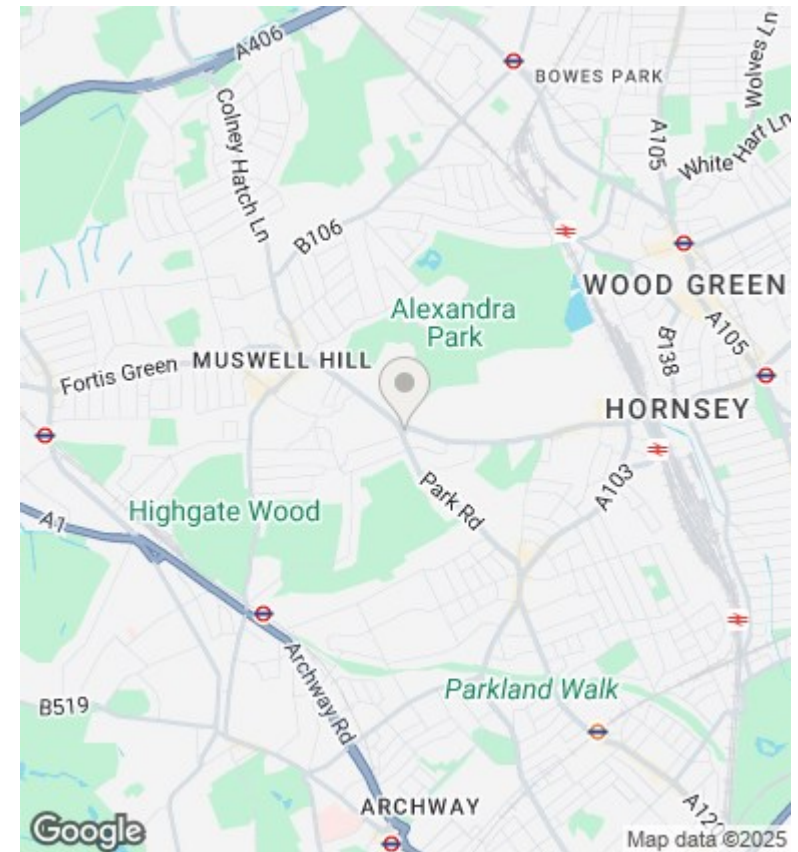
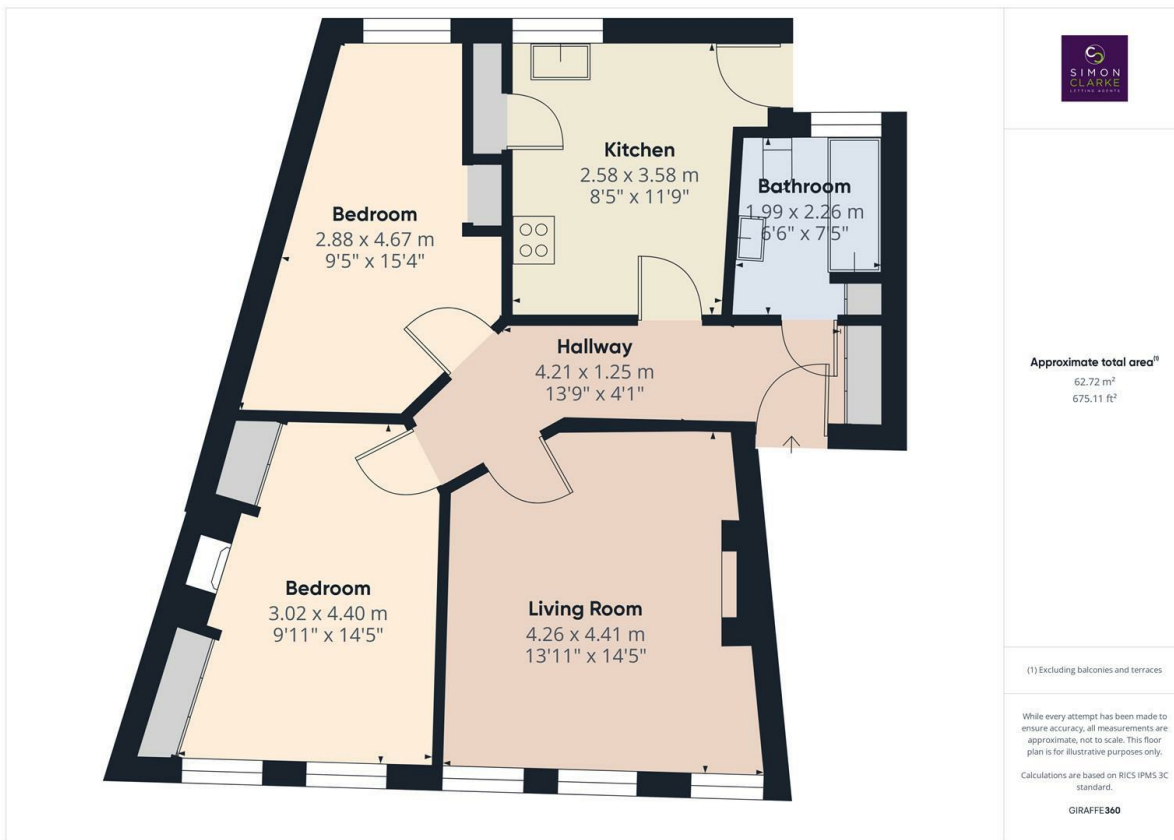




Priory Road, London, N8 8NB

£1,850 PCM

- 2 Bedroom flat above commercial premises
- Built in wardrobes to both bedrooms
- Council Tax band C - £1,87318 per annum
- Modern fitted kitchen with appliances
- Excellent location to shops and open spaces
- Unfurnished
- Fitted carpets throughout
- Available on long term tenancy (initial 12 months)
- Available from 1st April 2025



Directions

Viewings

Viewings by arrangement only. Call 02083499000 to make an appointment.

Council Tax Band

C

EPC Rating:

C

Energy Efficiency Rating		Current	Potential
<i>Very energy efficient - lower running costs</i>			
(92 plus) A			
(81-91) B			
(69-80) C		69	74
(55-68) D			
(39-54) E			
(21-38) F			
(1-20) G			
<i>Not energy efficient - higher running costs</i>			
England & Wales	EU Directive 2002/91/EC		