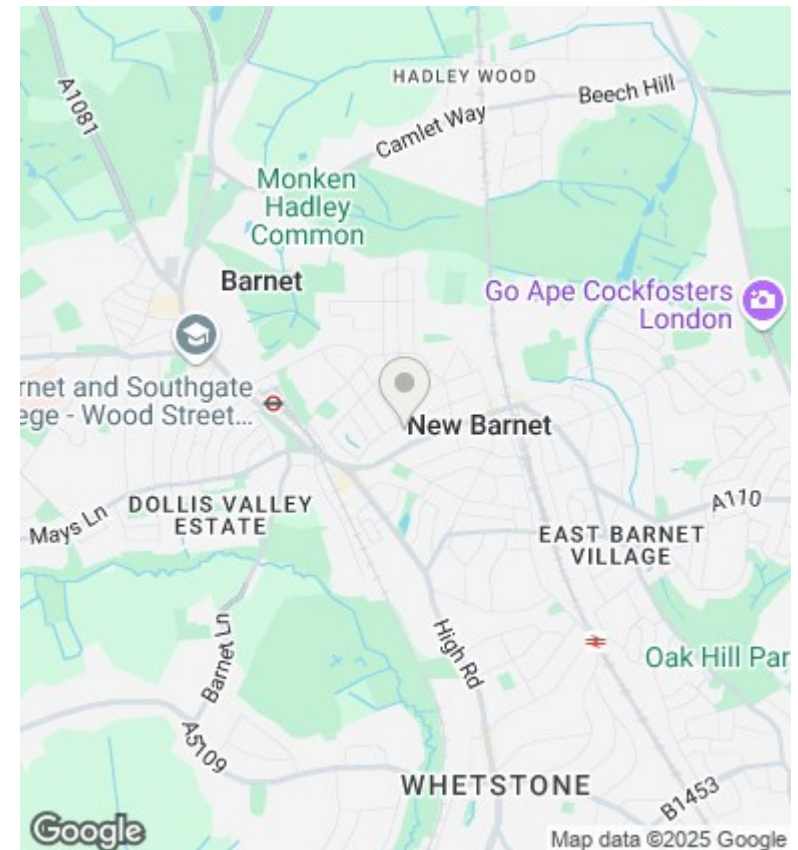
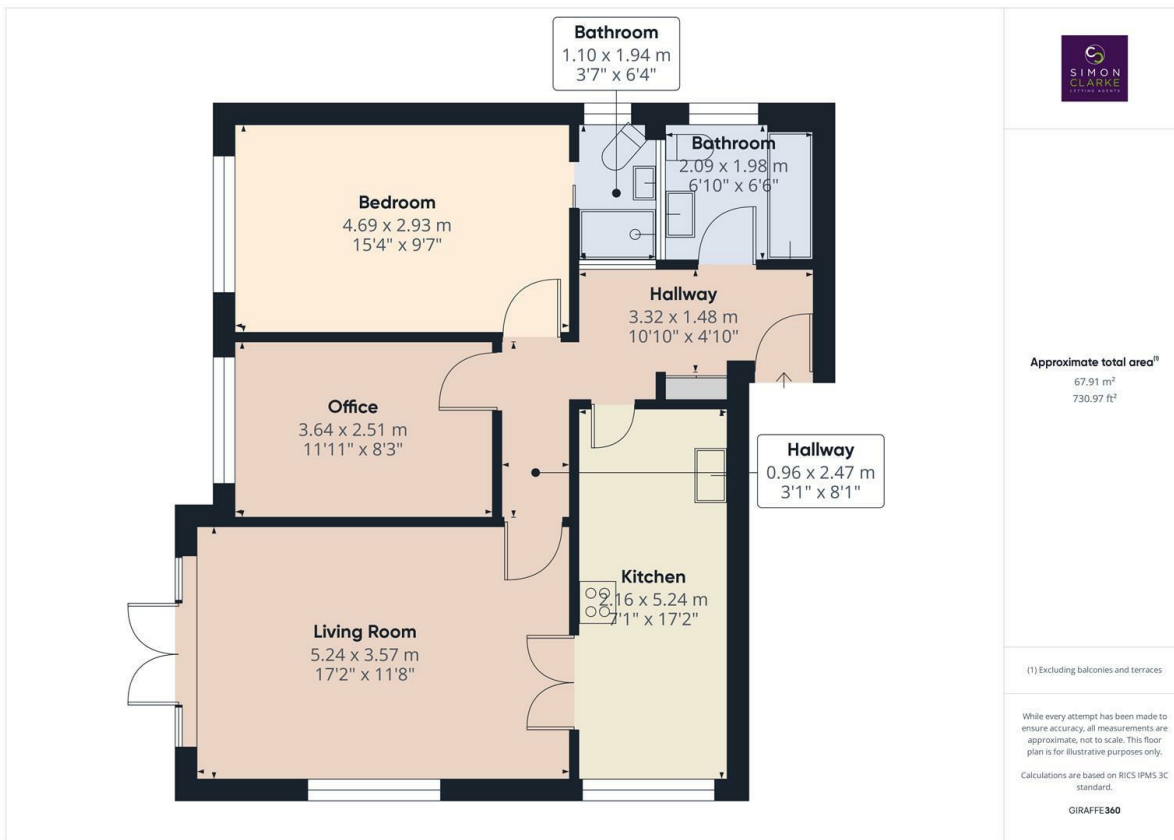




Neville Croft, Barnet, EN5 5ES

£1,695 PCM

- Managed by Simon Clarke Letting Agents
- Close to Underground and British Railway stations
- Available on long term tenancy (initial 12 months)
- Available from 15th April 2025
- Ground floor 2 bedroom flat
- Eat-in kitchen with appliances
- Council tax band D - £1,943.24pa (2024-2025)
- Brand new carpets to be installed in both bedrooms
- 2 Bathrooms (1 shower en-suite)
- Part furnished



Directions

Viewings

Viewings by arrangement only. Call 02083499000 to make an appointment.

Council Tax Band

D

EPC Rating:

D

