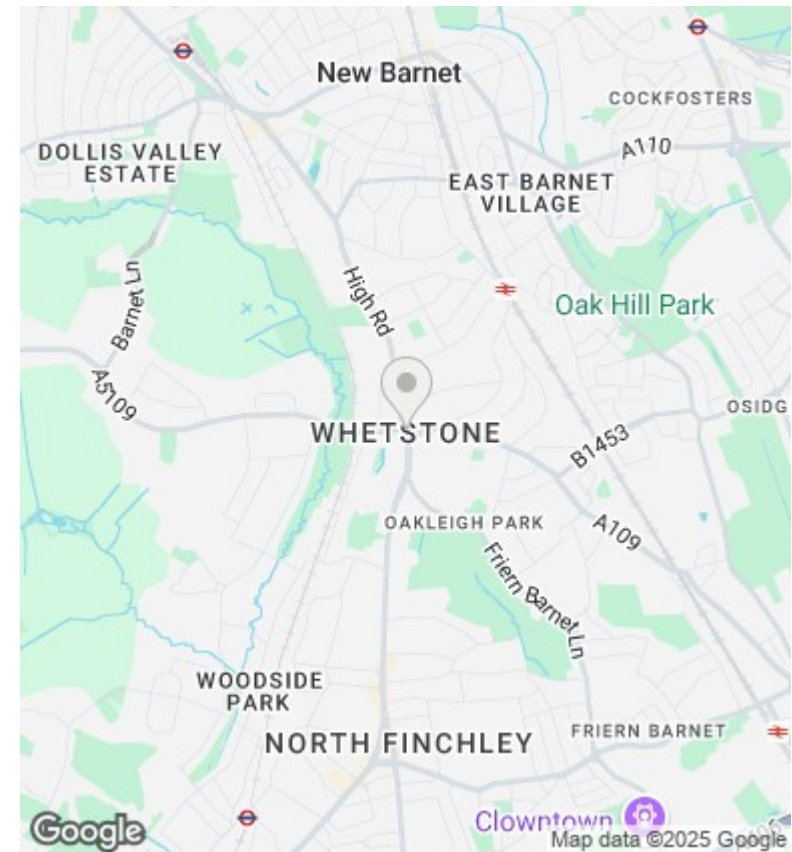
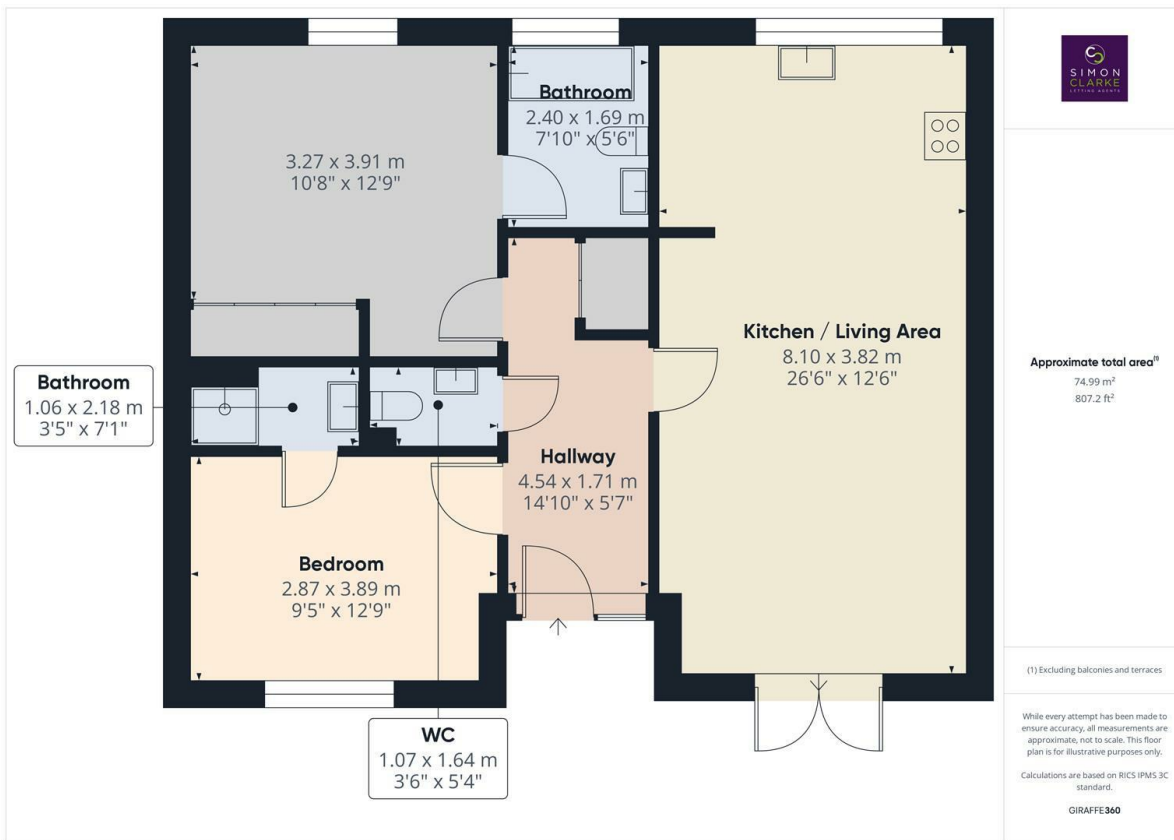




Totteridge Lane, London, N20 9QH

£2,000 PCM

- 2 Bedroom 2 bathroom apartment
- Allocated off street parking
- Available on long term tenancy (initial 12 months)
- Available NOW
- Newly redecorated throughout
- Modern fitted kitchen open plan with lounge
- Unfurnished / part-furnished
- Lift serviced apartment
- Own patio area offering stunning far reaching views over Totteridge
- Council tax band D



Directions

7 Ballards Lane, Finchley, London, N3 1UX
02083499000

Viewings

Viewings by arrangement only. Call 02083499000 to make an appointment.

Council Tax Band

D

EPC Rating:

C

Energy Efficiency Rating		Current	Potential
Very energy efficient - lower running costs			
(92 plus) A			
(81-91) B			
(69-80) C		74	77
(55-68) D			
(39-54) E			
(21-38) F			
(1-20) G			
Not energy efficient - higher running costs			
England & Wales		EU Directive 2002/91/EC	

Hello@simonclarke.co.uk
www.simonclarke.co.uk