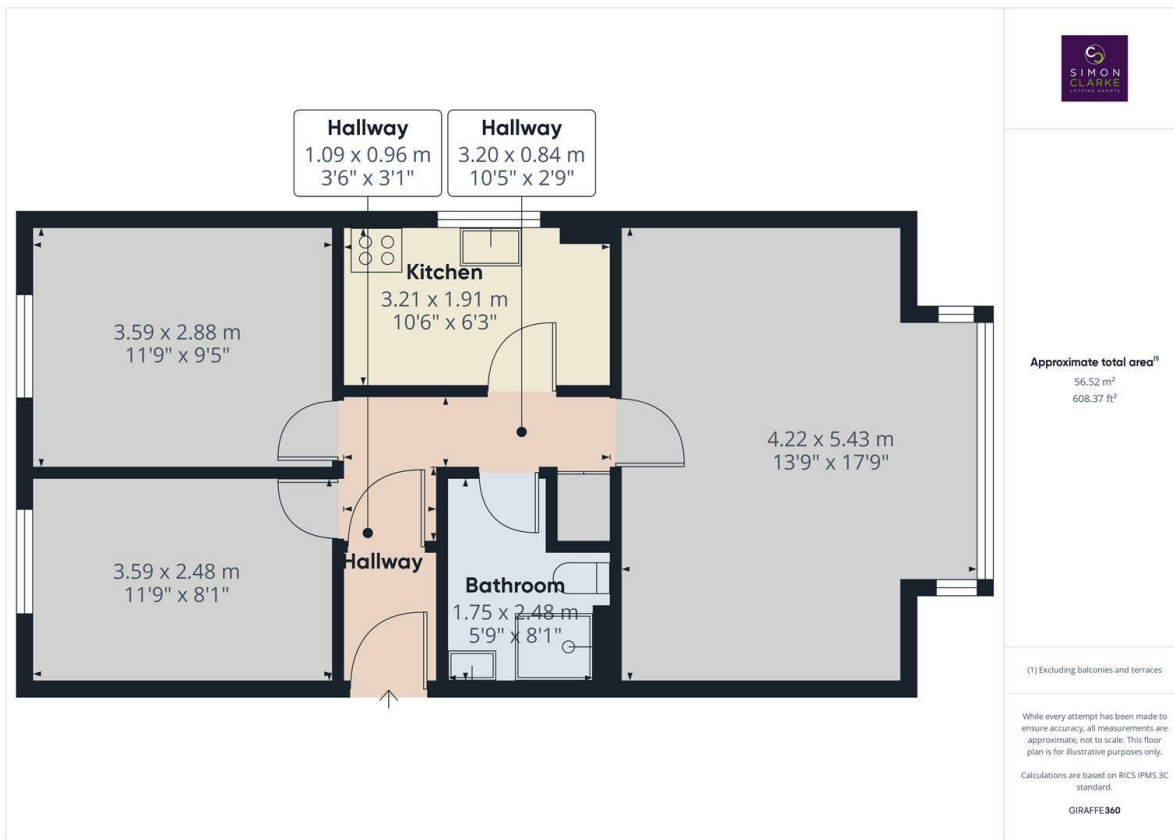


Wyllotts Close, Potters Bar, EN6 2HN

£1,495 Per Calendar Month

- Well presented 2 Bedroom apartment
- New wooden flooring
- Available on long term tenancy (initial 12 months)
- Available NOW
- Newly redecorated throughout
- Shower room
- Council tax band C - Hertsmere Council
- Brand new fitted kitchen with appliances including dishwasher
- Close to train station, shops and amenities
- Unfurnished



Directions

Viewings

Viewings by arrangement only. Call 02083499000 to make an appointment.

Council Tax Band

C

EPC Rating:

E

