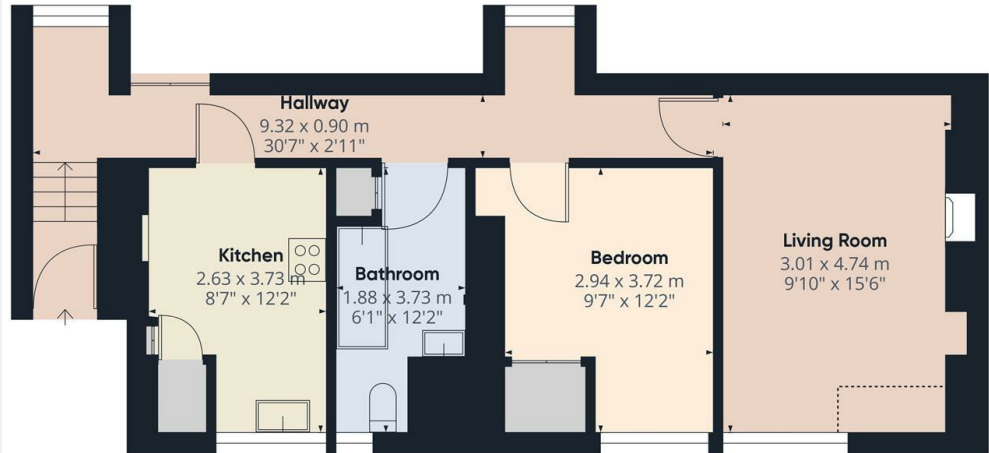




East End Road, London, N3 3LU

£1,400 PCM

- Purpose built attractive 1 bedroom flat
- Short walk to local parks and shops and Finchley Central tube station
- Available on long term basis (initial 12 months)
- Available from 12th March 2025
- ***PROPERTY IS TO BE FULLY REDECORATED THROUGHOUT AND HAVE NEW UPVC DOUBLE GLAZING INSTALLED PRIOR TO COMMENCEMENT OF TENANCY***
- Large eat in kitchen with fitted appliances including dishwasher
- Council tax band C - £1,727.32 pa
- Ample storage space available
- Lounge with laminate floor and feature fireplace
- Furnished



Approximate total area⁽¹⁾
53.63 m²
577.27 ft²

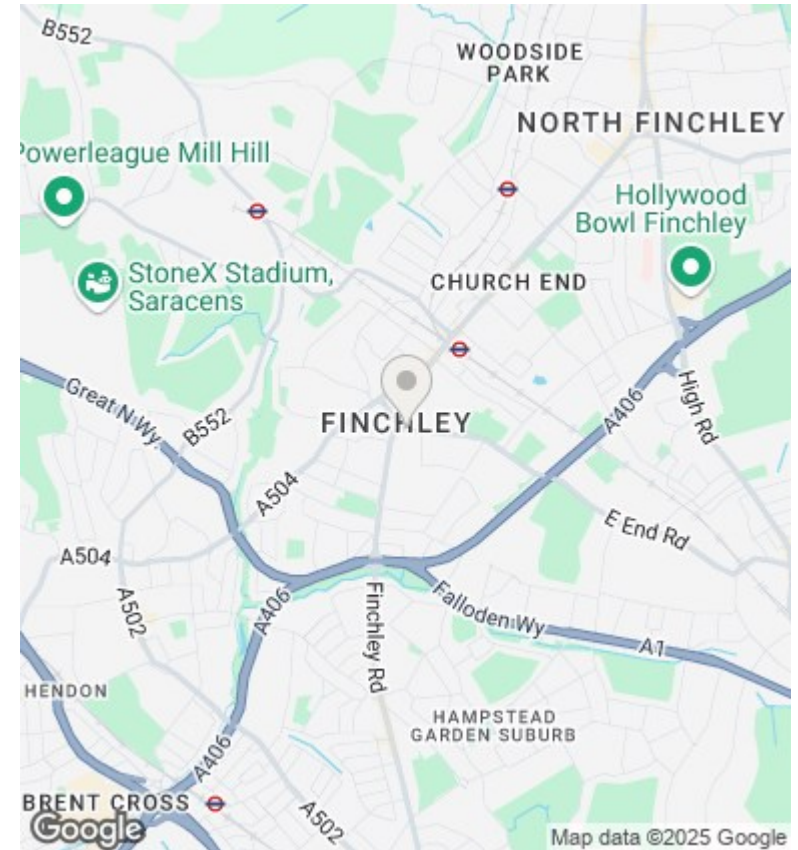
Reduced headroom
0.87 m²
9.36 ft²

(1) Excluding balconies and terraces

Reduced headroom
..... Below 1.5 m/5 ft

While every attempt has been made to ensure accuracy, all measurements are approximate, not to scale. This floor plan is for illustrative purposes only. Calculations are based on RICS IPMS 3C standard.

GIRAFFE360



Directions

Viewings

Viewings by arrangement only. Call 02083499000 to make an appointment.

Council Tax Band

C

EPC Rating:

D

Energy Efficiency Rating

	Current	Potential
Very energy efficient - lower running costs		
(92 plus) A		
(81-91) B		
(69-80) C		
(55-68) D	67	71
(39-54) E		
(21-38) F		
(1-20) G		
Not energy efficient - higher running costs		
England & Wales	EU Directive 2002/91/EC	