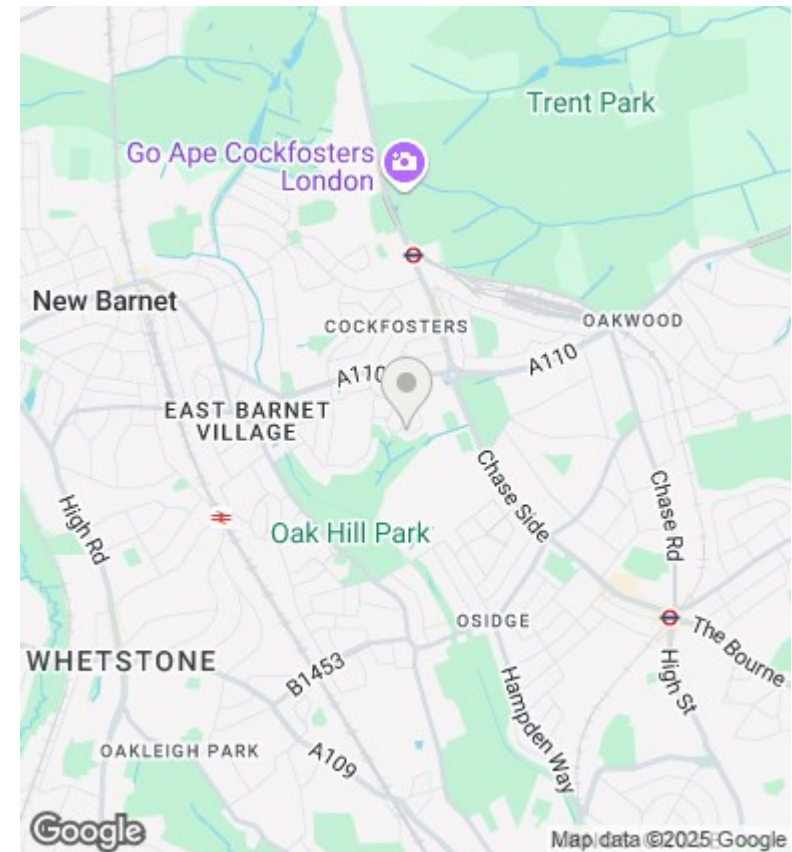
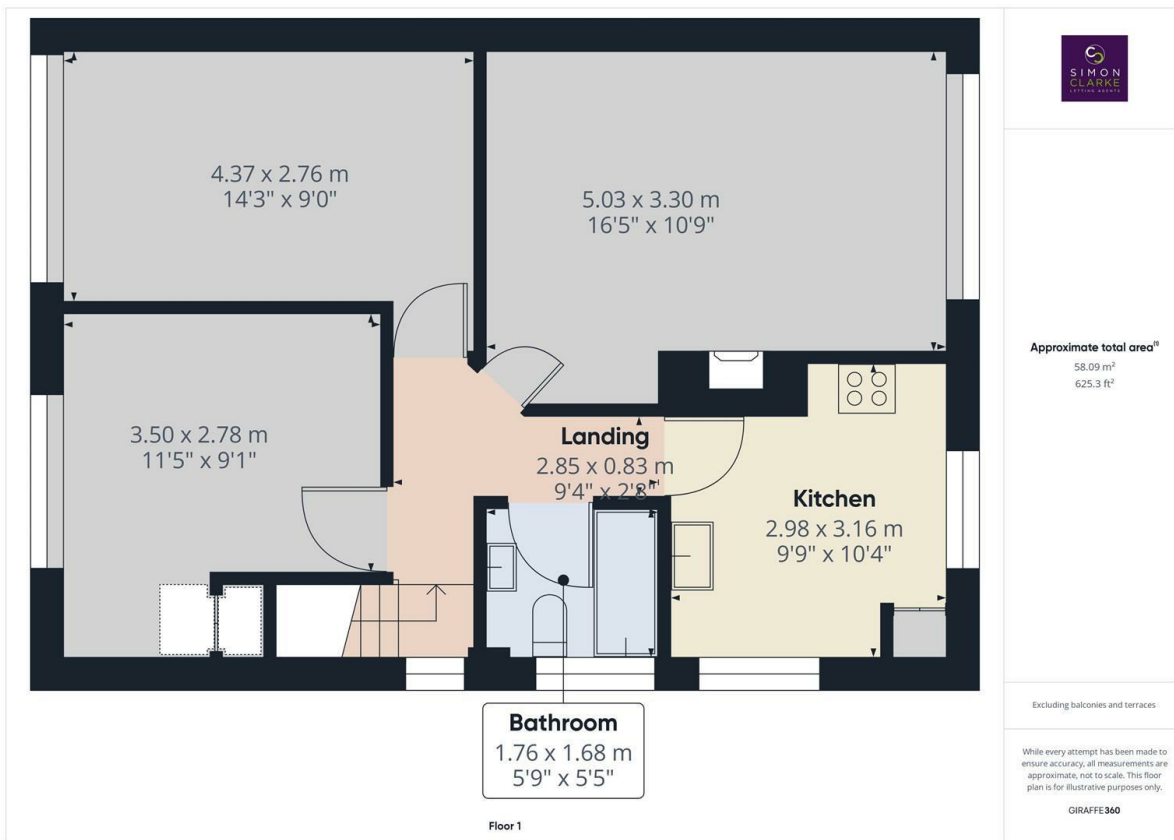




Vernon Crescent, Hertfordshire, EN4 8QQ

£1,650 PCM

- 2 Double bedroom maisonette
- Close to Oak Hill Park
- Available on long term tenancy (Initial 12 months)
- Available from 13th February 2025
- laminate wooden floors throughout
- Fitted kitchen with appliances
- Unfurnished
- Private rear garden
- Fully tiled bathroom suite
- Council tax band D - £1,943.24pa



Directions

Viewings

Viewings by arrangement only. Call 02083499000 to make an appointment.

Council Tax Band

D

EPC Rating:

C

Energy Efficiency Rating		
	Current	Potential
<i>Very energy efficient - lower running costs</i>		
(92 plus) A		
(81-91) B	75	77
(69-80) C		
(55-68) D		
(39-54) E		
(21-38) F		
(1-20) G		
<i>Not energy efficient - higher running costs</i>		
England & Wales	EU Directive 2002/91/EC	