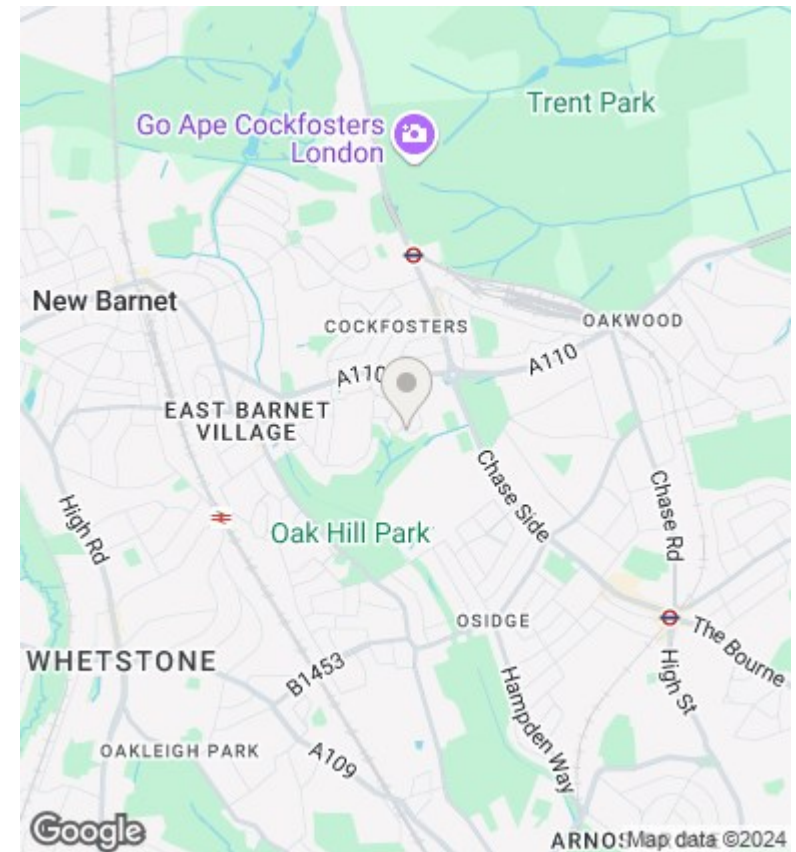
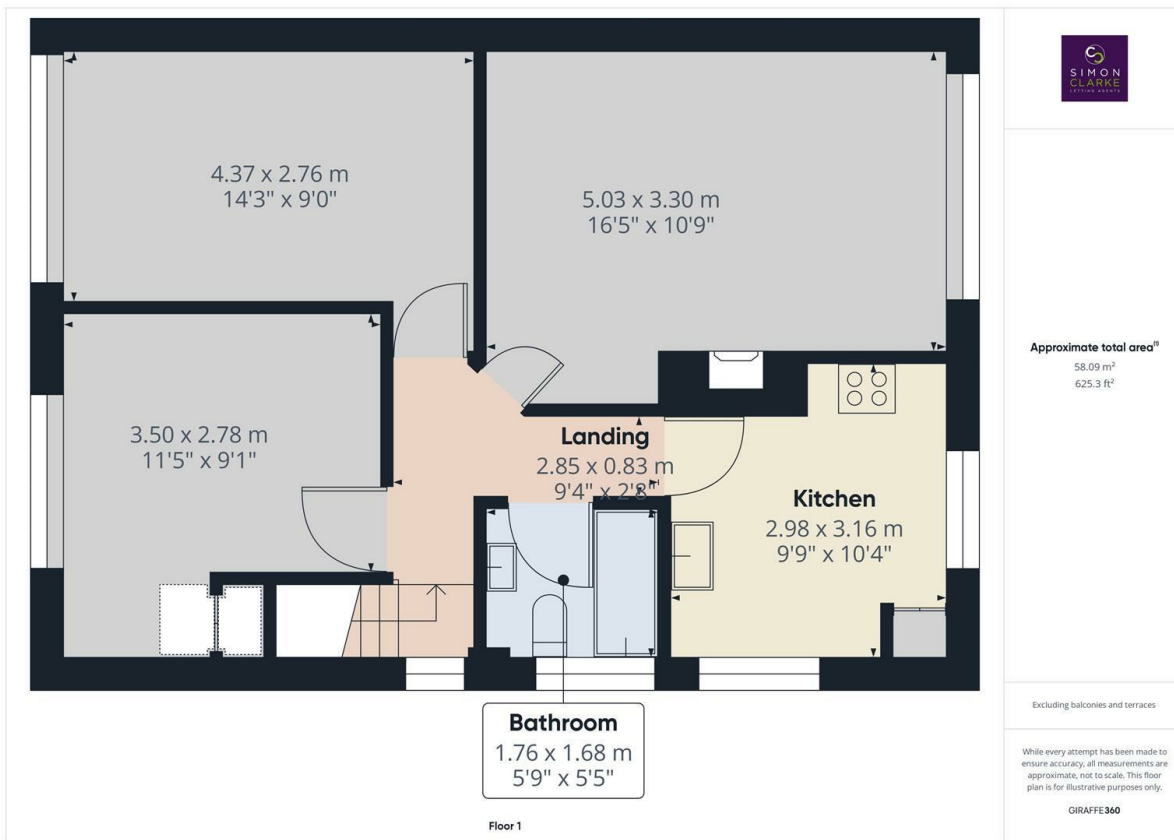




## Vernon Crescent, Hertfordshire, EN4 8QQ

£1,700 PCM

- 2 Double bedroom maisonette
- Close to Oak Hill Park
- Available on long term tenancy (Initial 12 months)
- Available from 13th February 2025
- laminate wooden floors throughout
- Fitted kitchen with appliances
- Unfurnished
- Private rear garden
- Fully tiled bathroom suite
- Council tax band D - £1,943.24pa



## Directions

## Viewings

Viewings by arrangement only. Call 02083499000 to make an appointment.

## Council Tax Band

D

## EPC Rating:

C

| Energy Efficiency Rating                           |                         |           |
|--|-------------------------|-----------|
|  | Current                 | Potential |
| <i>Very energy efficient - lower running costs</i> |                         |           |
| (92 plus) <b>A</b>                                 |                         |           |
| (81-91) <b>B</b>                                   | 75                      | 77        |
| (69-80) <b>C</b>                                   |                         |           |
| (55-68) <b>D</b>                                   |                         |           |
| (39-54) <b>E</b>                                   |                         |           |
| (21-38) <b>F</b>                                   |                         |           |
| (1-20) <b>G</b>                                    |                         |           |
| <i>Not energy efficient - higher running costs</i> |                         |           |
| <b>England &amp; Wales</b>                         | EU Directive 2002/91/EC |           |