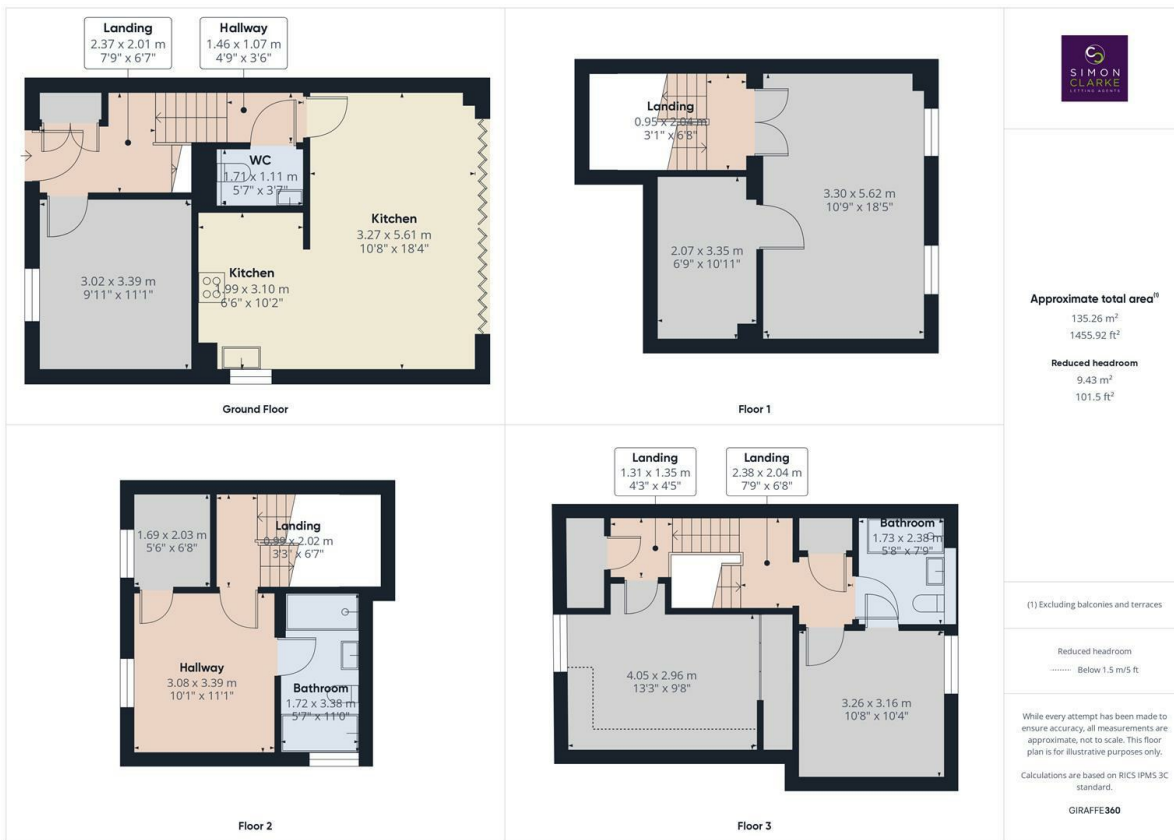




Amberden Avenue, London, N3 3DE

£3,750 PCM

- Stunning 4 bedroom townhouse
- Stunning eat in style kitchen with bi-folds onto private rear garden
- Master bedroom benefits from a 4 piece en suite bathroom and walk in wardrobe
- Available NOW
- Versatile layout over 3 floors
- Built in speak system throughout the home
- Council tax band G - £3,238.73 per annum
- Two bathrooms and guest cloakroom
- Private south facing garden with patio
- Unfurnished



SIMON CLARKE
Estate Agents

Approximate total area*
135.26 m²
1455.92 ft²

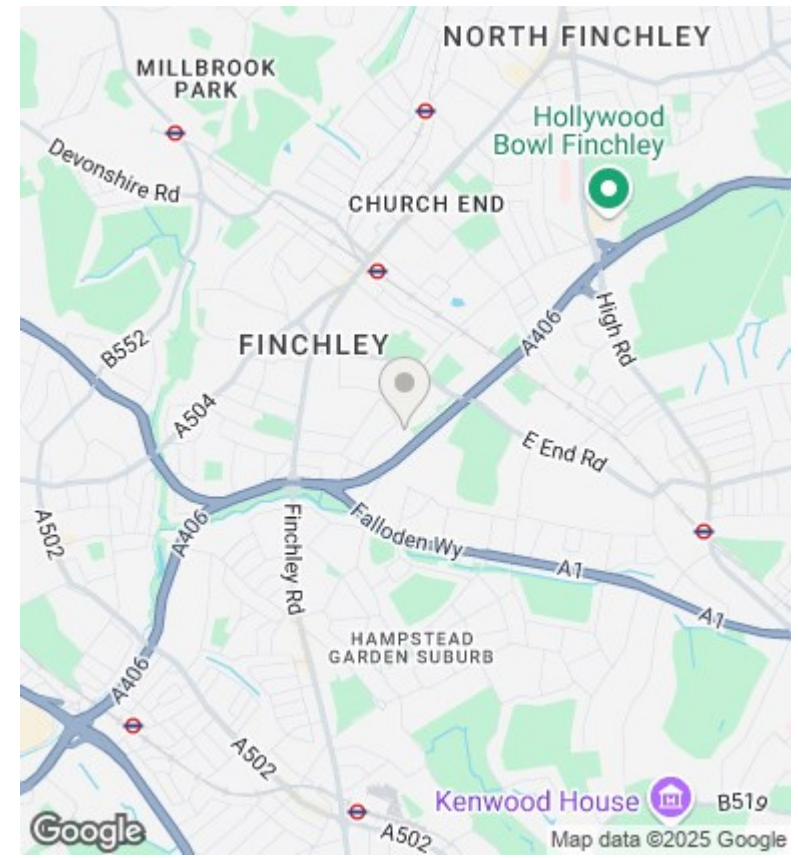
Reduced headroom
9.43 m²
101.5 ft²

(1) Excluding balconies and terraces

Reduced headroom
..... Below 1.5 m/5 ft

While every attempt has been made to ensure accuracy, all measurements are approximate, not to scale. This floor plan is for illustrative purposes only. Calculations are based on RICS IPMS 3C standard.

GIRAFFE360



Directions

Viewings

Viewings by arrangement only. Call 02083499000 to make an appointment.

Council Tax Band

G

EPC Rating:

B

