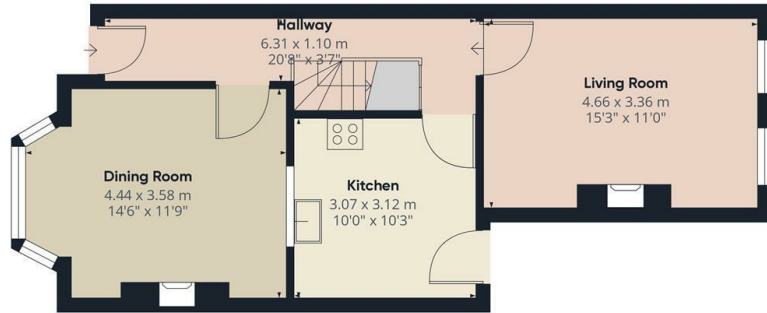




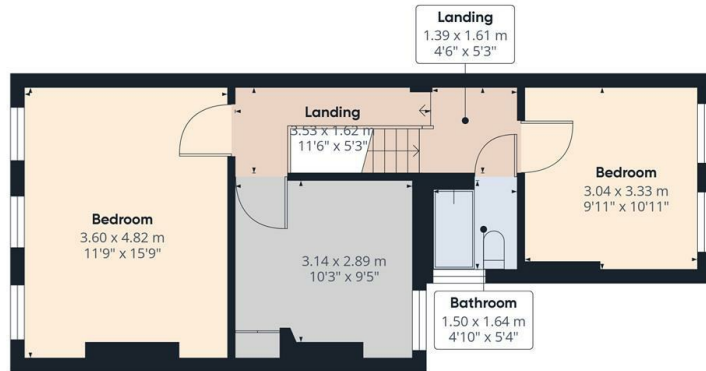
Oakleigh Road South, London, N11 1LA

£2,200 PCM

- 3 Bedroom terraced house
- Private rear garden
- Council tax band D - £1,943.24pa
- Available 18th January 2025
- Close to local shops and amenities
- Close to New Southgate BR Station and Arnos Grove tube station
- Available for long term tenancy - initial 12 months
- Large fitted kitchen with appliances and serving hatch into dining room
- Gas central heating / Double glazed
- Unfurnished



Ground Floor



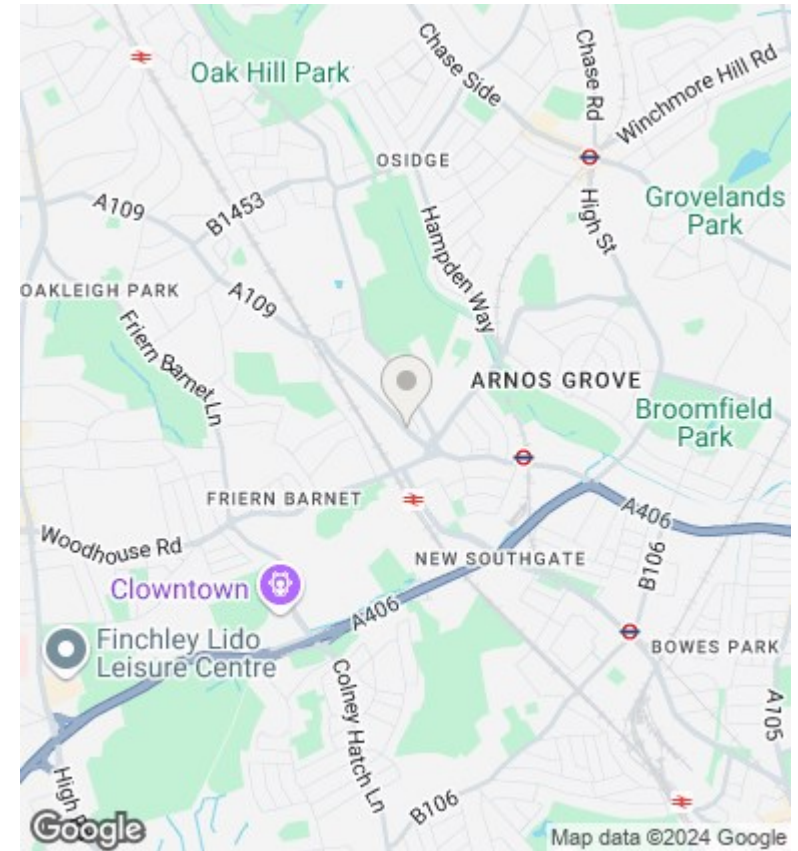
Floor 1

Approximate total area[†]
93.19 m²
1003.1 ft²

(†) Excluding balconies and terraces

While every attempt has been made to ensure accuracy, all measurements are approximate, not to scale. This floor plan is for illustrative purposes only. Calculations are based on RICS IPMS 3C standard.

GIRAFFE360



Directions

Viewings

Viewings by arrangement only. Call 02083499000 to make an appointment.

Council Tax Band

D

EPC Rating:

D

Energy Efficiency Rating		Current	Potential
<i>Very energy efficient - lower running costs</i>			
(92 plus)	A		86
(81-91)	B		
(69-80)	C		
(55-68)	D	64	
(39-54)	E		
(21-38)	F		
(1-20)	G		
<i>Not energy efficient - higher running costs</i>			
England & Wales		EU Directive 2002/91/EC	