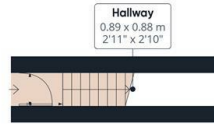




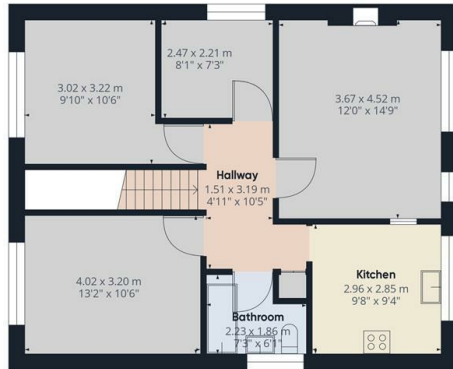
Weirdale Avenue, London, N20 0AH

£1,500 PCM

- Managed by Simon Clarke Letting Agents
- AVAILABLE ON SHORT TERM RENATL ONLY
- Unfurnished
- Available NOW
- 3 Bedroom apartment
- Off street parking and garage
- Council Tax band D
- Newly redecorated throughout
- rear garden
- laminate wooden floors throughout



Ground Floor



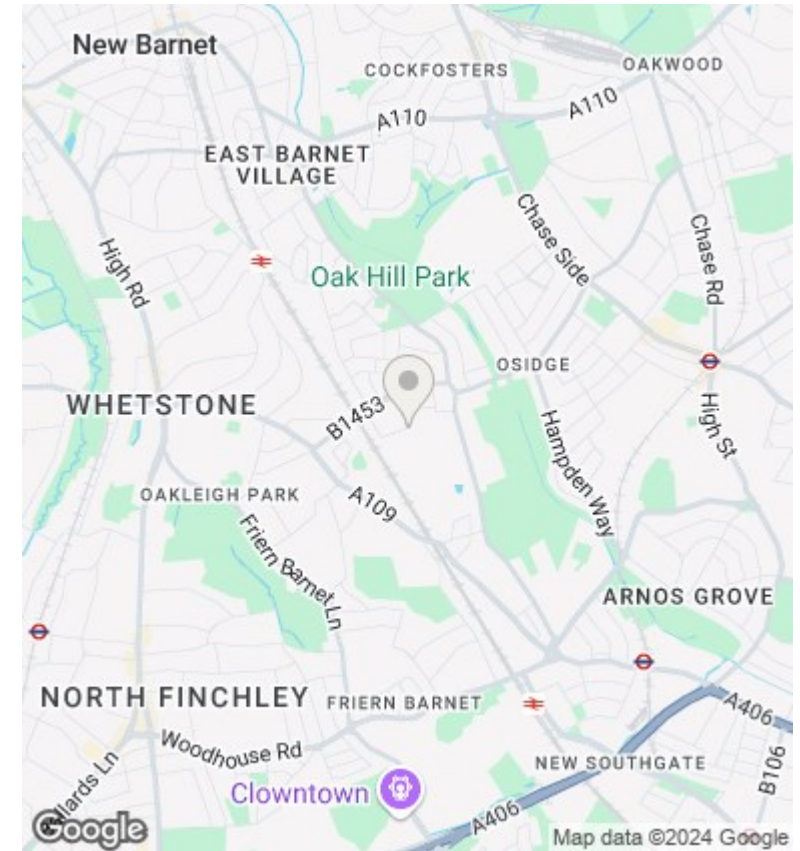
Floor 1

Approximate total area⁽¹⁾
68.22 m²
734.32 ft²

(1) Excluding balconies and terraces

While every attempt has been made to ensure accuracy, all measurements are approximate, not to scale. This floor plan is for illustrative purposes only. Calculations are based on RICS IPMS 3C standard.

GIRAFFE360



Directions

Viewings

Viewings by arrangement only. Call 02083499000 to make an appointment.

Council Tax Band

D

EPC Rating:

D

Energy Efficiency Rating		Current	Potential
<i>Very energy efficient - lower running costs</i>			
(92 plus)	A		
(81-91)	B		
(69-80)	C		
(55-68)	D	61	67
(39-54)	E		
(21-38)	F		
(1-20)	G		
<i>Not energy efficient - higher running costs</i>			
England & Wales		EU Directive 2002/91/EC	