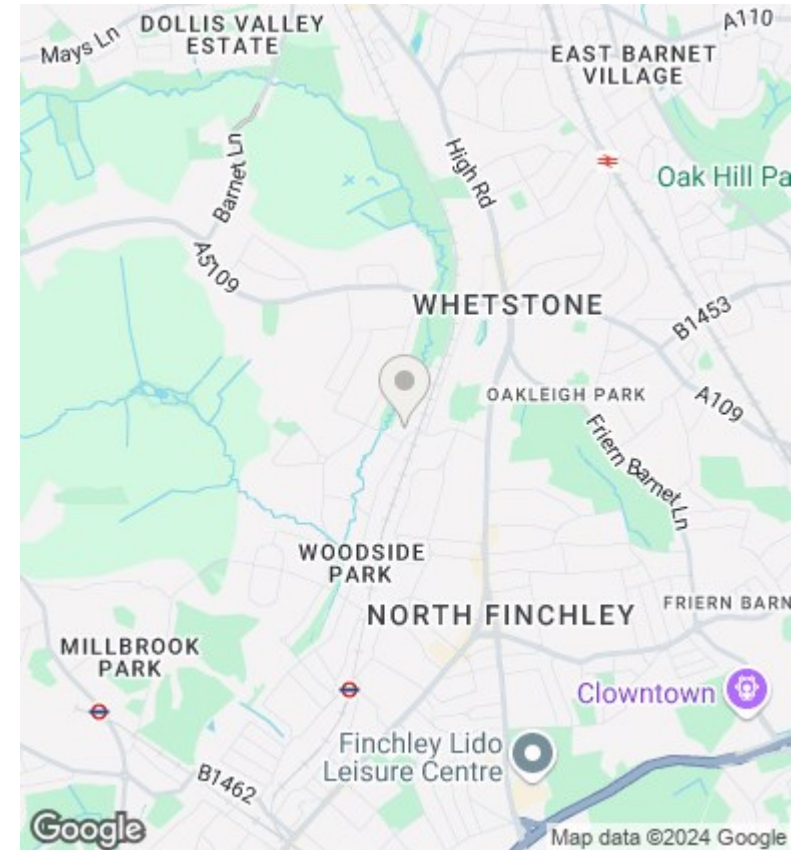
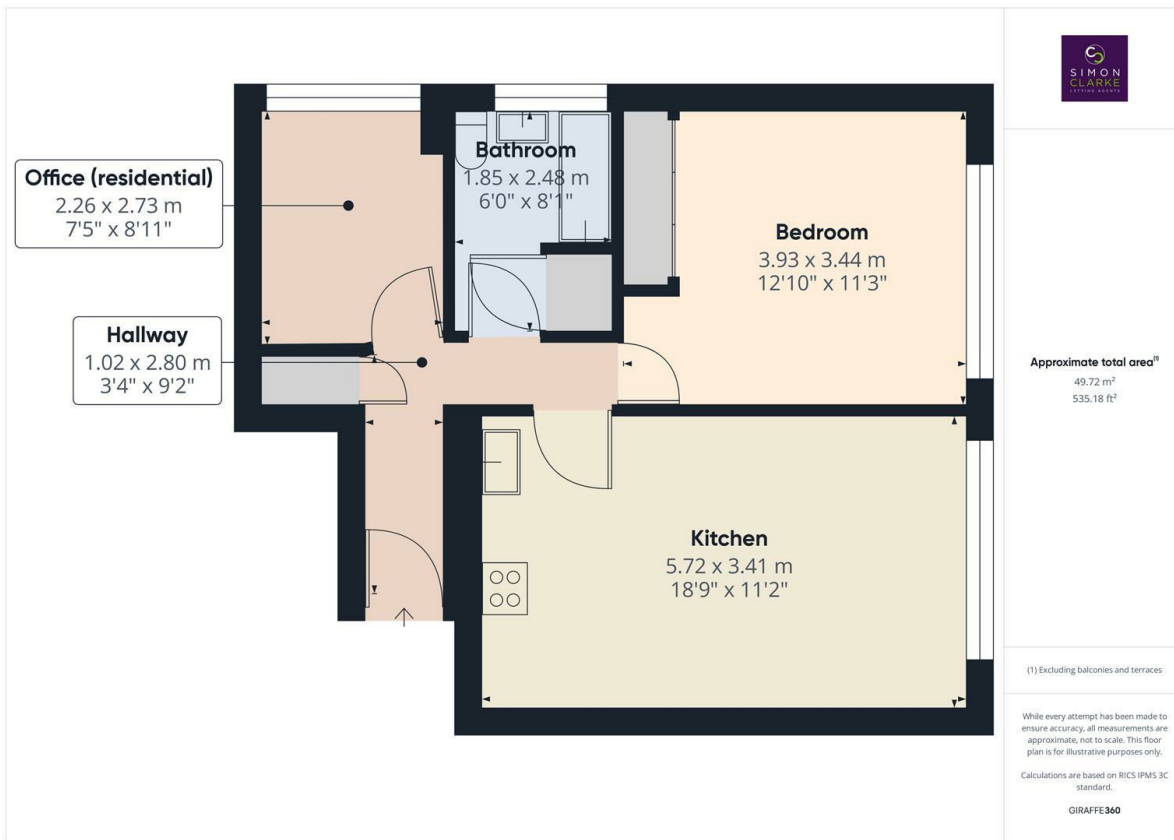




Holden Road, London, N12 7DX

£1,575 PCM

- Modernised 1 Bedroom flat with WITH STUDY ROOM
- Located close to Woodside Park Tube Station
- Available for long term tenancy (initial 12 months)
- Available 17th January 2025
- Ground floor flat with off street parking
- Fitted wardrobes in master bedroom
- Council tax band C £1,727.32pa
- Entry-phone system
- Attractive fitted kitchen with integral appliances
- Unfurnished



Directions

Viewings

Viewings by arrangement only. Call 02083499000 to make an appointment.

Council Tax Band

C

EPC Rating:

C

