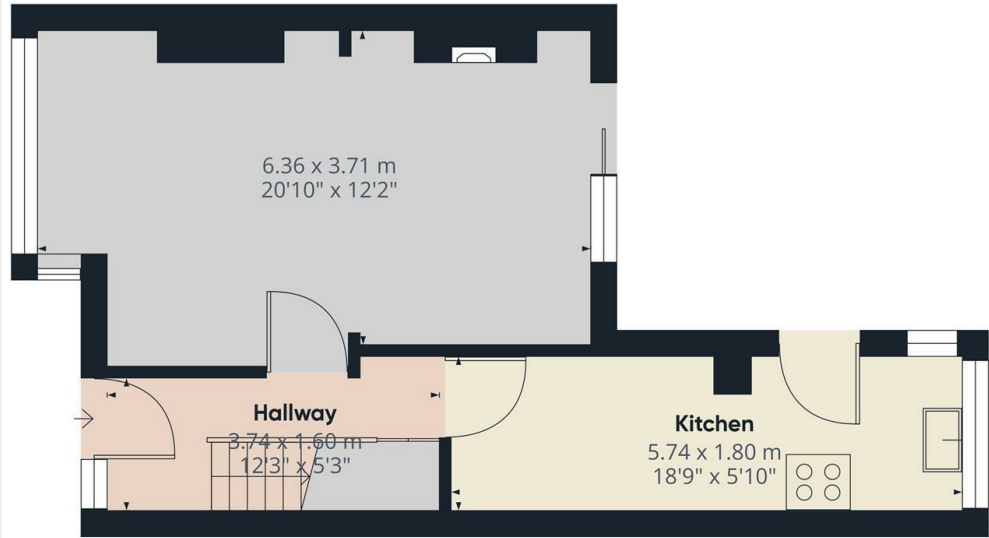




Hillier Close, London, EN5 1BE

£1,950 PCM

- Managed by Simon Clarke Letting Agents
- Modern fitted kitchen with appliances
- Available on long term tenancy (initial 12 months)
- Available NOW
- 3 Bedroom Mid Terraced House
- Quiet no through road
- Council tax band D
- Off street parking for 2 cars
- Low maintenance garden
- Unfurnished



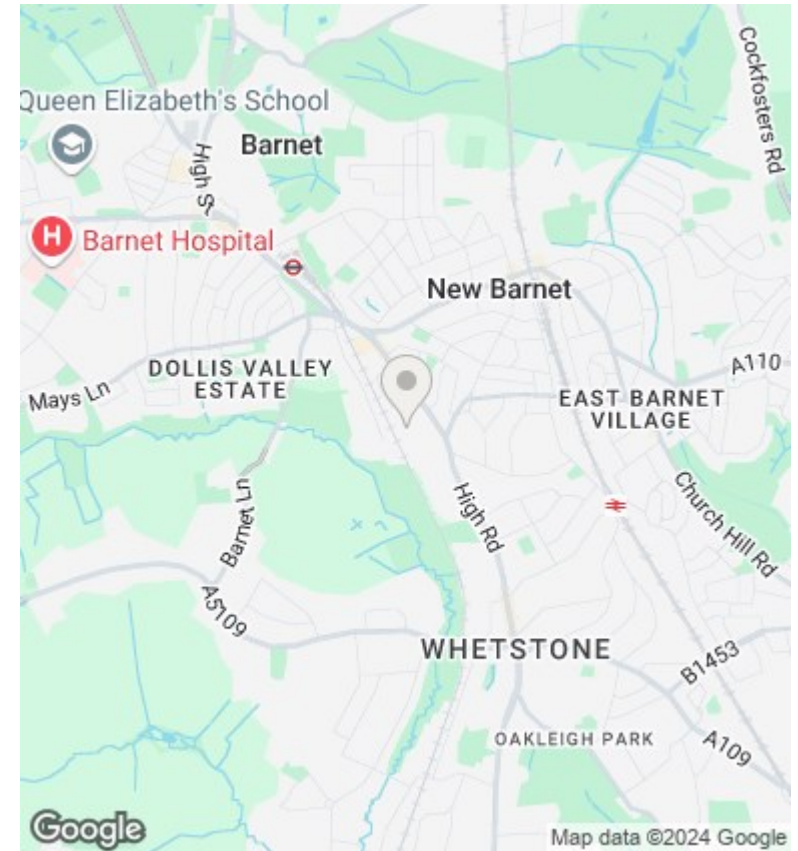
Ground Floor

Approximate total area⁽¹⁾
40.07 m²
431.31 ft²

(1) Excluding balconies and terraces

While every attempt has been made to ensure accuracy, all measurements are approximate, not to scale. This floor plan is for illustrative purposes only. Calculations are based on RICS IPMS 3C standard.

GIRAFFE360



Directions

Viewings

Viewings by arrangement only. Call 02083499000 to make an appointment.

Council Tax Band

D

EPC Rating:

D

Energy Efficiency Rating		
	Current	Potential
<i>Very energy efficient - lower running costs</i>		
(92 plus) A		
(81-91) B		79
(69-80) C		
(55-68) D	62	
(39-54) E		
(21-38) F		
(1-20) G		
<i>Not energy efficient - higher running costs</i>		
England & Wales	EU Directive 2002/91/EC	