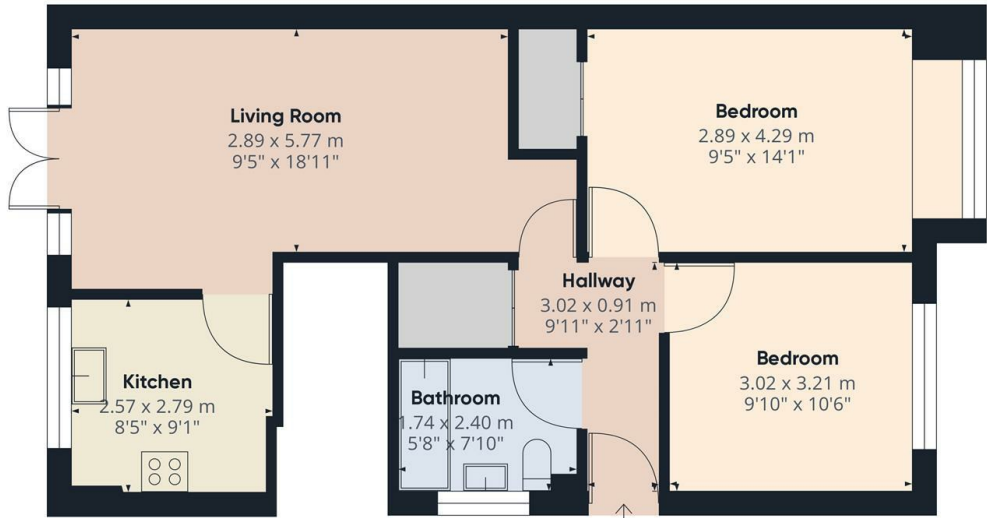




Richmond Road, Barnet, EN5 1SL

£1,750 PCM

- Managed by Simon Clarke Letting Agents
- South facing patio rear garden
- Available on long term tenancy (initial 12 months)
- Available from 7th December 2024
- 2 Double bedroom ground floor maisonette
- Own garage
- Council tax band D - £1943.24pa
- Immaculate condition throughout
- Modern fitted kitchen with appliances inc. dishwasher
- Unfurnished

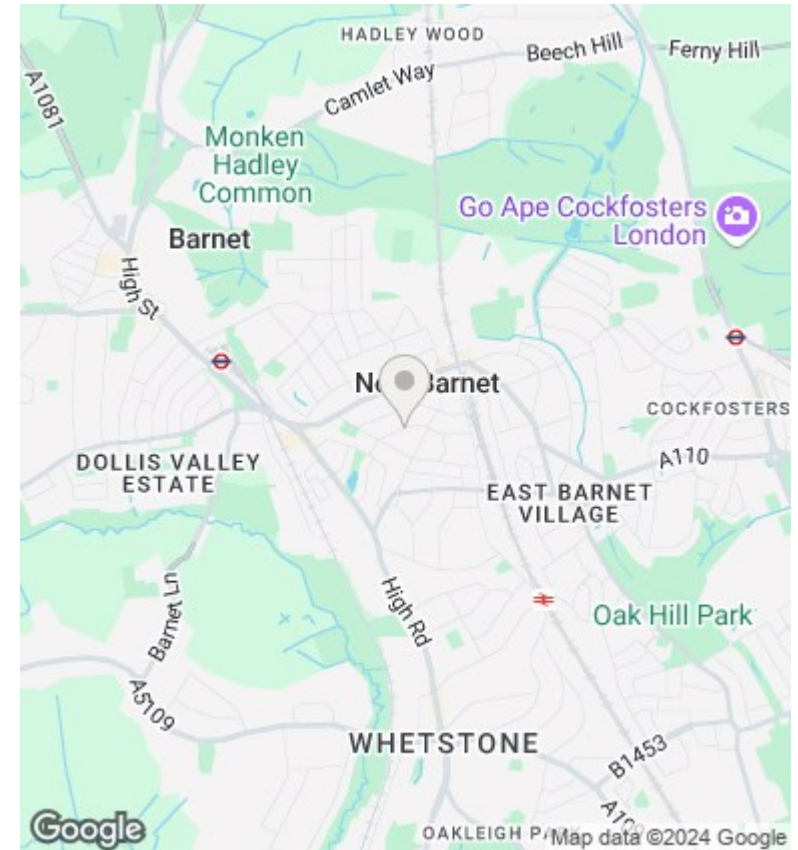


Approximate total area¹⁾
61.42 m²
661.12 ft²

(1) Excluding balconies and terraces

While every attempt has been made to ensure accuracy, all measurements are approximate, not to scale. This floor plan is for illustrative purposes only. Calculations are based on RICS IPMS 3C standard.

GIRAFFE360



Directions

Viewings

Viewings by arrangement only. Call 02083499000 to make an appointment.

Council Tax Band

D

EPC Rating:

C

Energy Efficiency Rating		Current	Potential
Very energy efficient - lower running costs			
(92 plus) A			
(81-91) B		79	79
(69-80) C			
(55-68) D			
(39-54) E			
(21-38) F			
(1-20) G			
Not energy efficient - higher running costs			
England & Wales		EU Directive 2002/91/EC	