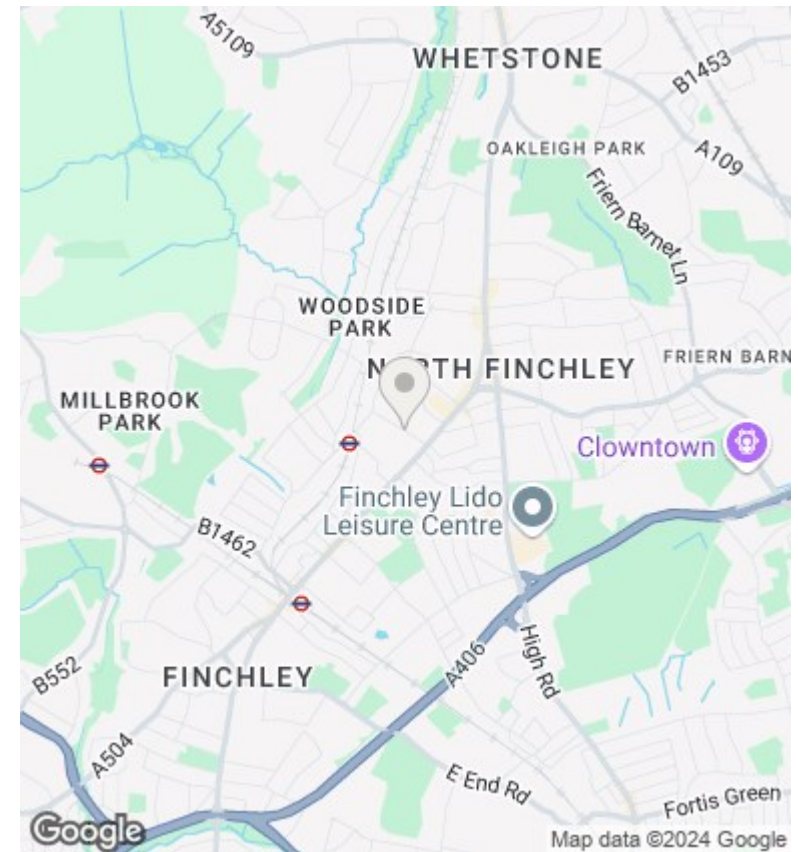
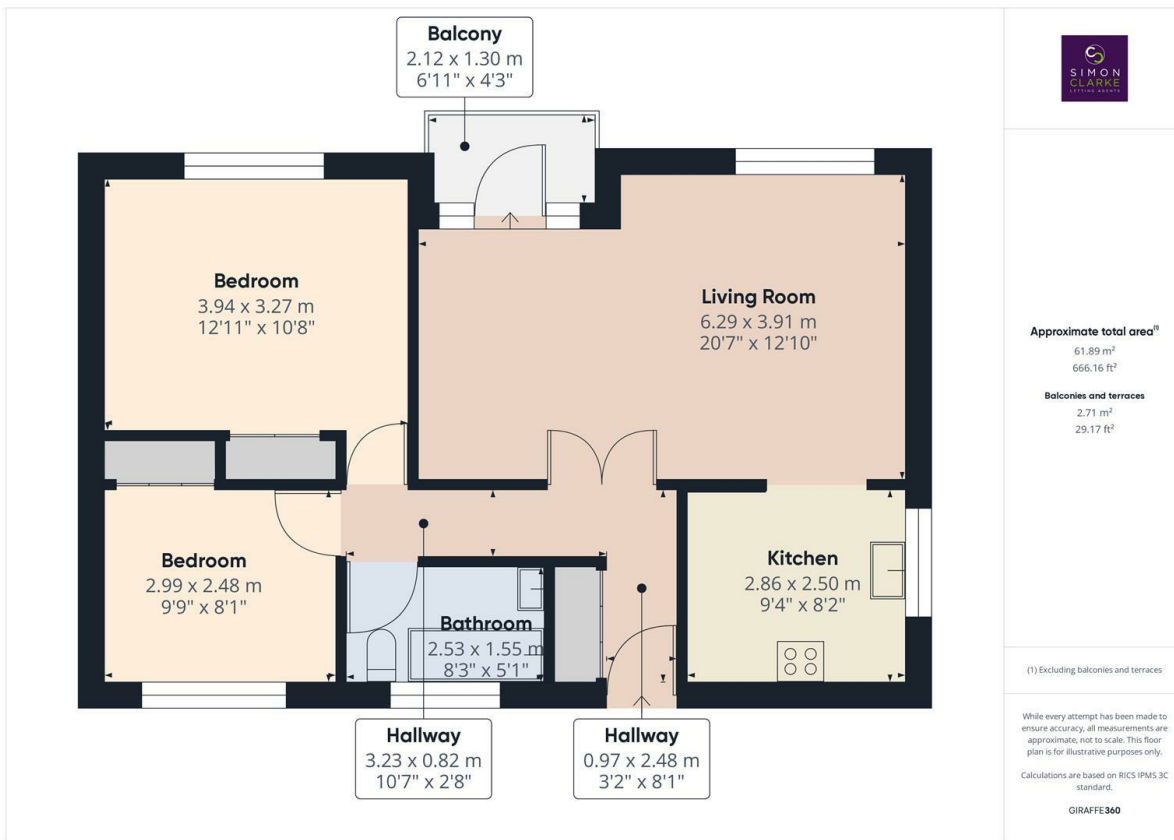




## Moss Hall Grove, London, N12 8PG

£1,775 PCM

- Managed by Simon Clarke Letting Agents
- Stylish bathroom suite
- Available on long term tenancy (initial 12 months)
- Available from 12th December 2024
- 2nd Floor 2 Double bedroom apartment
- Huge lounge with balcony
- Unfurnished
- Modern fitted kitchen with appliances
- Close to West Finchley tube station
- Council tax band D - £1,943.24pa



## Directions

## Viewings

Viewings by arrangement only. Call 02083499000 to make an appointment.

## Council Tax Band

D

## EPC Rating:

D

